



**FEEL THE HEAT!**

Revision No: 00  
 Revision Date: 07-09-2018

## Pursuit Doors

Part # **07-1800** Ranger XP 1000 2 Seater "New Body" (2018+) Black

Congratulations on your purchase of the DragonFire Pursuit Doors for the Ranger. The Ranger has long been a great ride for work and play so we have designed doors to fit both applications. With the updated body style, we have also redesigned our doors with the new style to match. Easy to use and install, these doors are off-road tough with tons of style! Stay Locked & Secured with DragonFire! Be sure to check out the full line of DragonFire Accessories for your Polaris Ranger vehicle at your local authorized dealer or online at <http://www.DragonFireRacing.com>

• *Do not fit with the Old Body Style Ranger.*



- Read and understand these instructions before installing product
- This product does not provide roll over protection or side protection
- Ensure doors are securely latched and locked prior to operating vehicle
- Do not use product if there are any signs of damage or fatigue

### Disclaimer

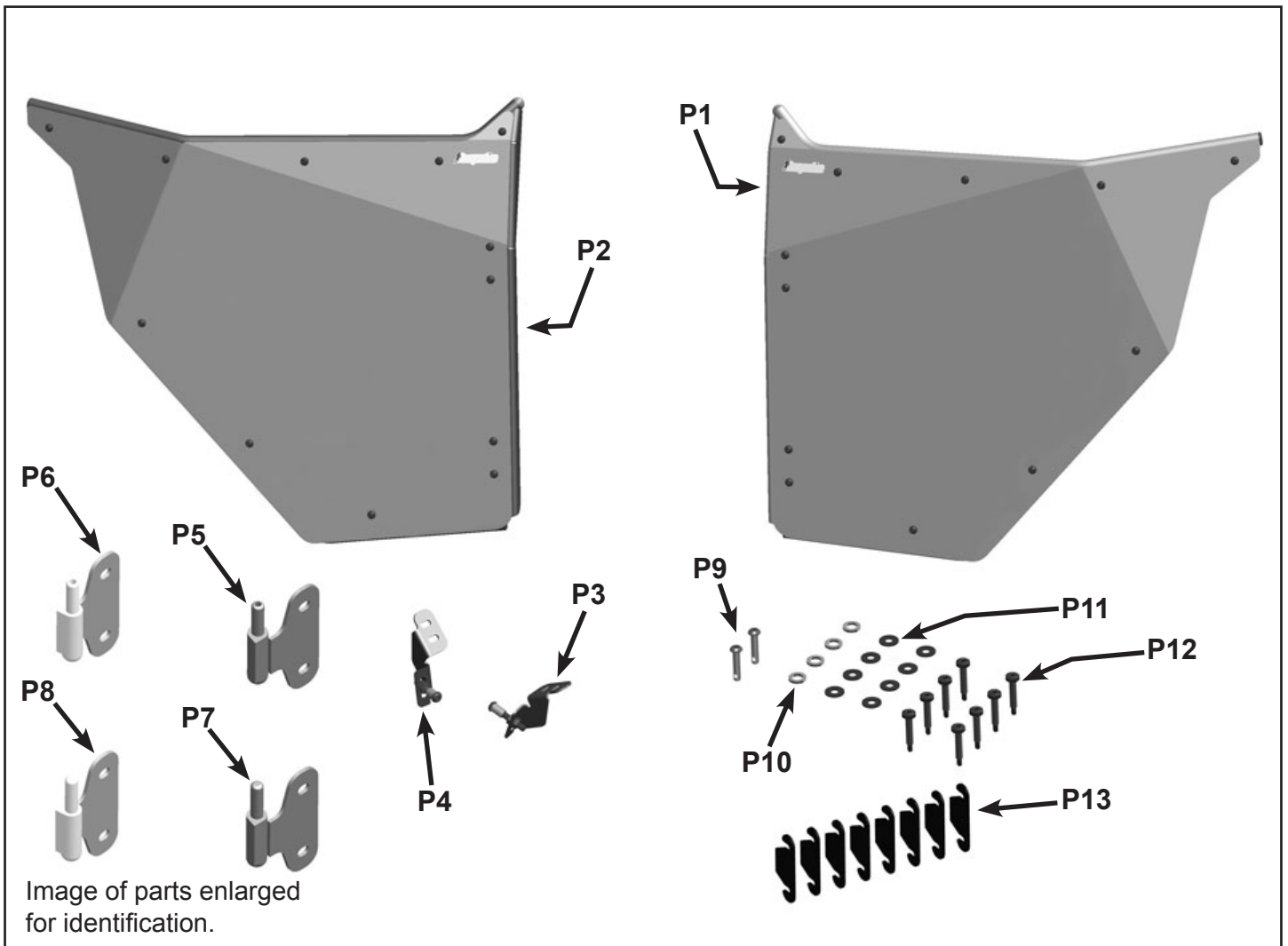
Off road activities can be hazardous and could lead to injury, dismemberment, paralysis and death. No warranty of representation is made as to the products ability to protect the user from any injury or death. The user assumes that risk. The acceptance and /or use of this merchandise purchased from DragonFire by the customer hereby shall release DragonFire from any and all liability pertaining to the use of such merchandise.

Tools Required
T40 Torx
#3 Phillips Screw Driver
13mm Wrench or Socket
14mm Wrench or Socket
M5 or M6 Hex Bit (Allen Wrench)
Ratchet

**Pre-installation:** Lay out components and compare to list and images. Images may not portray the full detail or exact shape of the parts; however, they represent parts that have same or similar function.

Refer to DragonFire Racing Website for ensure that you have the latest revision of instructions & templates.

Part & Hardware List					
ITEM	QTY	SIZE	LENGTH	TYPE	STEP USED
P1	1	-	-	Door Assembly - Driver Side	12
P2	1	-	-	Door Assembly - Passenger Side	20
P3	1	-	-	Striker Assembly - Driver Side	5
P4	1	-	-	Striker Assembly - Passenger Side	
P5	1	-	-	Upper Hinge Bracket - Driver Side (Threaded)	11
P6	1	-	-	Upper Hinge Bracket - Passenger Side (Threaded)	
P7	1	-	-	Lower Hinge Bracket - Driver Side (Non-Threaded)	8
P8	1	-	-	Lower Hinge Bracket - Passenger Side (Non-Threaded)	
P9	2	1/4"-20	1-1/4"	Button Head Cap Screw	14
P10	4	.390" ID	-	Hinge Bushing .625 OD, (Brass Washer)	10
P11	8	1/4" ID	-	Flat Washer .688 OD, Black	8, 9, & 11
P12	8	1/4"-14	1-1/2"	Pan Head Self-Tapping Screw, Black	8, 9, & 11
P13	8	-	-	Shim	10 & 12



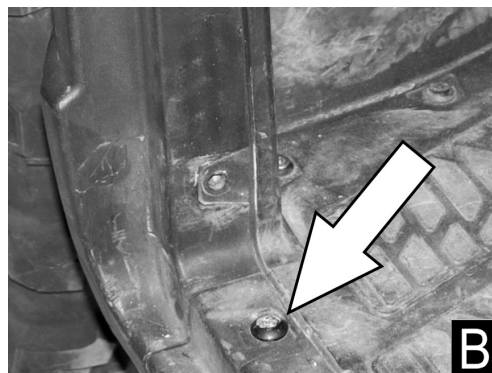
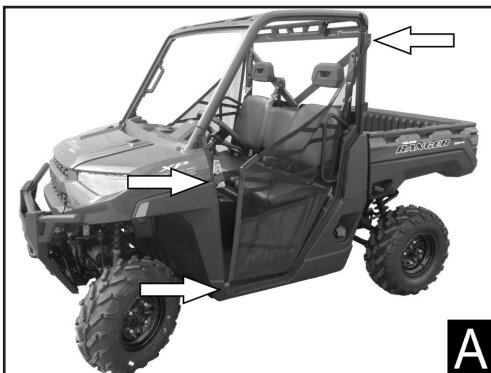
**Step 1:** Place vehicle on a flat and level surface. Place gear selector in “Park” and remove keys from the ignition.

**Step 2 to 4 is for uninstalling the net and any hardware that might interfered with installation of the doors.**

**Step 2:** Uninstall hardware and brackets where shown at the front of the vehicle. Uninstall the bolt where shown at the top holding the net (Figure A). Reinstall and tighten the factory bolts at the top and where the plastic bucket was removed.

**Step 3:** Reinstall factory bolt at the bottom as shown in Figure B. The rest of the uninstalled hardware will not be reused.

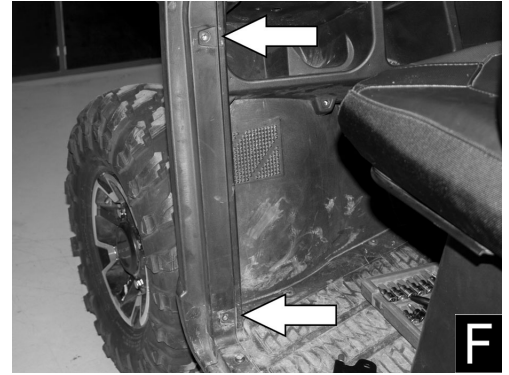
**Step 4:** Remove factory bolts at location shown and set aside to be reused (Figure C). Remove net; it will not be reused.



**Step 5:** Align the provided Striker Assembly - Driver Side [P3]. Loosely install the factory bolt removed in previous step as shown (Figure D).

**Step 6:** With the striker assembly pressed against plastic, install the second factory bolt and then hand-tighten both (Figure E).

**Step 7:** Uninstall the bolt at the top and ensure there is no bolt installed at the bottom hole shown by arrows (Figure F).



**Step 8:** Obtain Lower Hinge Bracket - Driver Side [P7], check part with image to ensure the part is correct before installing. Starting with the bottom hole, align the bottom slot of the hinge bracket to the hole and then loosely install the self-tapping screw [P12] with washer [P11]. Make sure to leave at least 1/2" between the plastic and the hinge bracket (Figure G).

**Step 9:** Align the hinge bracket and make sure it is vertically straight. Install the self-tapping screw [P12] with washer [P11] to the upper slot into the plastic and steel frame of vehicle, but leave loose for adjustment (Figure H).

**Step 10:** Obtain 1 Shim [P13] and then place the shim between the plastic and the hinge bracket (Figure I). Handtighten the 2 self-tapping screws until slightly loose and then install 1 Hinge Bushing [P10] onto the hinge pin.

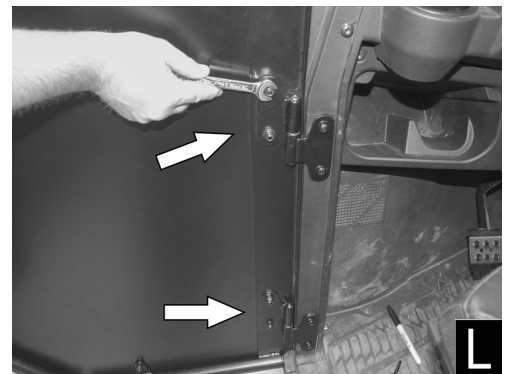
**Note:** The shim is use to adjust the fore and aft position of the door. Door can have 0 to 2 shims for adjustment.



**Step 11:** Align the top slot of the Upper Hinge Bracket - Driver [P5] to the upper hole and then loosely install the self-tapping screw [P12] with washer [P11]. Make sure to leave 1/2" gap. When done, make sure the bracket is vertically straight and then loosely install self-tapping screw [P12] with washer [P11] to the bottom slot into the plastic and frame (Figure J).

**Step 12:** Repeat Step 10 for the Upper Hinge Bracket - Driver [P5] and then align the Door - Driver [P1] onto the hinge brackets (Figure K).

**Note:** If necessary, hinge brackets on the door can also be loosen for alignment (Figure L).



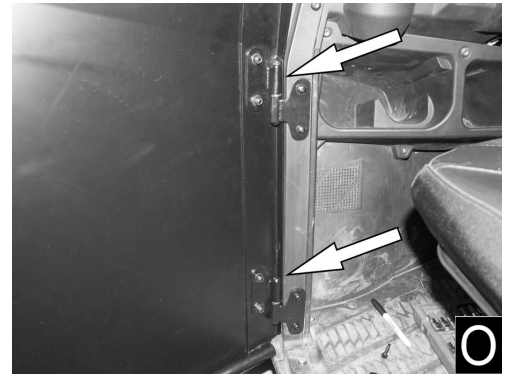
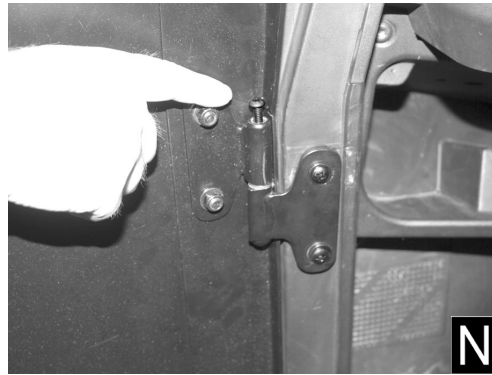


**Step 13:** Swing the door back and forth at approximately 45° so the hinge pins can fully align or sit into position and then tighten all hinge hardware.

**Note:** For the hinge brackets mounted to the vehicle, use the phillip head screw driver and tighten with one hand to avoid stripping out the screws (Figure M).

**Step 14:** Tighten the 1/4"-20 bolt [P9] to the upper hinge until stop and then loosen by a quarter to half a turn so the door can move freely (Figure N). If door does not move freely, adjust the tightness of the bolt until door can move freely.

**Step 15:** Slowly open the door and check for clearance with the plastic. Adjust hinge brackets installed to vehicle outward until the door just clears the plastic (Figure O). Tighten the hinge brackets per note in step 13.

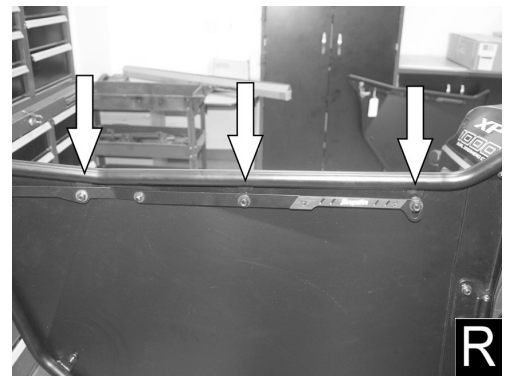


**Step 16:** Align the latch to the striker pin (Figure P). Striker pin can be adjusted both up/down and in/out for proper alignment. Ensure latch and striker pin are tightened after making the necessary adjustment.

**Step 17:** Close the door into position check for clearance and proper alignment with the plastic (Figure Q).

**Step 18:** When desired alignment has been reached and the door functions smoothly, tighten all hinge brackets and any other loose hardware.

**Step 19:** Tighten the hardware shown by arrow in Figure R. Adjust and tighten hardware until handle is rattle free, but still operates smoothly.



**Step 20:** Repeat instructions for Door Assembly - Passenger Side [P2] with the appropriate passenger side hardware (Figure S).

**Step 21:** This completes installation. Time to ride and enjoy!

**ProTip:** Periodically check all hardware and re-tighten if needed.

For further assistance please contact us at [customerservice@dragonfireracing.com](mailto:customerservice@dragonfireracing.com) or 1-800-708-9803.

