

FEEL THE HEAT!

Wildcat 4 LockDown Harness Bar

Part # **14-3101** Wildcat 4 - Harness Bar Black

Congratulations on your purchase of the DragonFire WildCat Harness Bar! As part of our Race Pace modular cage system this Harness Bar makes installing your DragonFire harnesses a snap.

WARNING

- Read and understand these instructions before installing product
- This product does not provide roll over protection
- Injury can occur in a rollover, ride with caution.

Tools Required

8mm Allen Wrench

17mm Wrench

Disclaimer

Off road activities can be hazardous and could lead to injury, dismemberment, paralysis and death. No warranty of representation is made as to the products ability to protect the user from any injury or death. The user assumes that risk. The acceptance and /or use of this merchandise purchased from DragonFire by the customer hereby shall release DragonFire from any and all liability pertaining to the use of such merchandise.

Step 1: Place vehicle on a flat and level surface. Place gear selector in “Park” and remove keys from the ignition.

Step 2: Locate factory cage bolts on passenger side B-Pillar, just behind the front seat. Replace the factory socket head cap screws and nuts with supplied bolts and non-locking hex nuts, keeping cage assembled and swapping one screw at a time. (Figure A) Torque screws to specification in factory service manual.

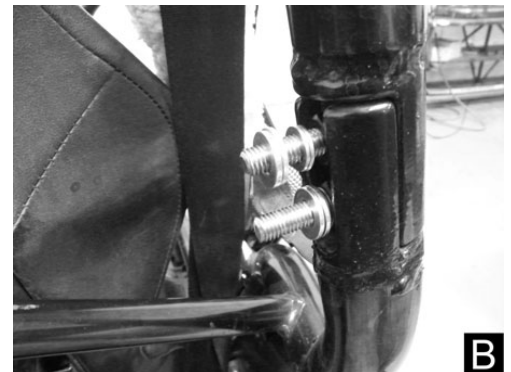
Step 3: On driver side, remove factory socket head cap screws and nuts, replacing with supplied bolts and non-locking hex nuts. Install supplied screws so that only 1/4” of threads stick out of the inside of the cage.

Step 4: Place two small diameter washers on passenger side screws, followed by 2 large diameter washers. (Figure B)

Step 5: Place passenger side bracket onto passenger side screws with washers.

Step 6: Place washers on driver side screws, similar to passenger. Lift harness bar to ensure proper spacing. Add or remove washers as needed for fitment.

Step 7: Once washer spacing is correct, align harness bar mount with driver side screws and tighten screws to torque specification in factory service manual. (Figure C)



Step 8: Place a supplied large washer on each of the screws and secure the harness bar with the supplied nylon locking nuts. (Figure D)

Step 9: This completes the installation of the harness bar. (Figure E) Install harnesses per harness manufacturer instructions.

Step 10: Time to ride and enjoy.

ProTip: Periodically check all hardware and re-tighten if needed.

For further assistance please contact your authorized DragonFire dealer

