

SYA Snorkel Kit for General 1000/1000XP/4 71-11350



HIGHLIFTER

SEIZMIK™



**SYA SNORKEL
YOUR ATV**

SYSTEM 3
OFF-ROAD
Traction. Strength. Style.

EPI
PERFORMANCE

✉ sales@highlifter.com

☎ 800-372-1137 | 8:00am - 6:00pm CST

📍 7455 Atkinson Drive, Shreveport, LA 71129



www.highlifter.com

Parts Available For These Popular Brands and Others

POLARIS

can-am

HONDA

Kawasaki

YAMAHA

READ BEFORE INSTALLATION

This snorkel kit is intended to provide clean, dry air to the engine, belt housing if equipped, and other parts needing venting on ATVs/UTVs, but does not necessarily mean the ATV/UTV can exceed the OE manufacturer's stated maximum rated water line depth. The snorkel kit is intended only as an additional margin of protection in the event that the ATV/UTV is inadvertently driven into water deeper than the OE manufacturer's air intakes will tolerate. There are many considerations to make when increasing water line depth and a snorkel is just one component.

This snorkel kit is NOT intended for riding in water deeper than what the OE manufacturer of your ATV/UTV recommends. Riding in water deeper than stated by the OE manufacturer is dangerous possibly causing the driver of the ATV/UTV to ride unexpectedly into deeper water subjecting the driver and/or

passengers to serious injury or death. Riding in water deeper than stated by the OE manufacturer can also cause complete failure of the ATV/UTVs engine. OE manufacturers will almost certainly void any warranty on the ATV/UTV if a snorkel is or has been installed at the time warranty service is sought.

It is the installer's responsibility to verify all components and particularly that any templates are correct before starting any part of the snorkel installation. The snorkel should be installed by a professional mechanic or one who is by experience fully competent with snorkel installation. Please note this is a custom installation and you may want/need to modify for your particular installation and additional items may be needed to install. Any snorkel, even those properly installed, can possibly leak under certain conditions causing catastrophic engine failure. The ATV/UTV owner should frequently check components for wear and tear and look for any signs of leaking at the joints. **THERE IS NO WARRANTY OR RETURN OF THIS SNORKEL, NOR IS THERE ANY WARRANTY ON DAMAGE DONE TO AN ATV/UTV AS A RESULT OF THE INSTALLED SNORKEL REGARDLESS OF WHOM PURCHASED OR INSTALLED THE SNORKEL.** If you are the dealer or installer it is your responsibility to inform the user of this warranty and the dangers of riding in water deeper than the OE recommends.

When using this product, your vehicle will be modified to increase performance. Whenever a modification is made to an ATV/UTV, you change the performance of the vehicle, including fuel system, handling, braking, and steering. You should always drive safely and avoid any maneuvers that would cause harm, serious injury or death to the driver or passengers. This product is manufactured only for off-road use.

When installing the snorkel kit, you are altering the airflow to the carburetor/throttle body and a jet kit or EFI programmer may or may not be required once the kit is installed.

ALL SALES OF SNORKEL KITS ARE FINAL – NO RETURNS, NO EXCEPTIONS.

NOTE: Make sure that you seal your air box with dielectric grease or silicone. This is very important in preventing water from getting into the air intake systems.

ALWAYS check snorkel connections after each ride to ensure there is no damage or possible leaks

BEFORE STARTING YOU WILL NEED THE FOLLOWING:

Ultra Black Brand Silicone or Medium Silicone

Dielectric Grease (Optional)

PARTS LIST

KIT/PART 71-11350

PARTS			
<i>CALLOUT</i>	<i>PART NUMBER</i>	<i>DESCRIPTION</i>	<i>QTY</i>
1	71-12281	Engine Intake Hose	1
2	71-12282	Inlet Hose 1	1
3	71-12284	Inlet Hose 2	1
4	71-12285	Outlet Hose	1
5	71-12283	Stabilizer Bracket	2
6	71-10213	#40 Hose Clamp	13
7	71-10218	#64 Hose Clamp	2
8	71-10216	#52 Hose Clamp	1
9	71-61335	Self-tapping Screw	6
10	71-10831	ABS Pipe 3" Long	4
11	71-11107	Bellow	1
12	71-12300	2" Silicone Coupling	4
13	71-11417	Warrior Riser	4
14	71-10912	Vent Tubing	25ft
15	71-11405	Heat Tape	10ft
16	71-61338	Zip Ties	8
17	71-10143	Straight Barb	2
18	71-10147	Reducing Barb	1



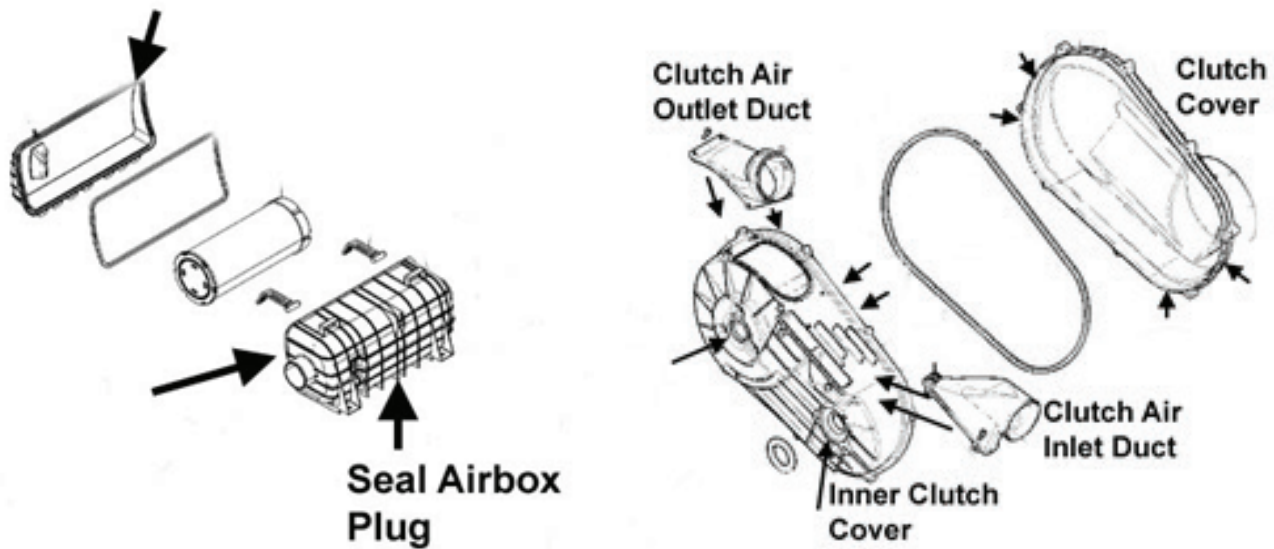
PARTS DIAGRAM



BEFORE YOU BEGIN

Before you start the installation of the snorkel, you have seal the air box and clutch cover with silicone or dielectric grease. Water can intrude behind the belt housing, so make sure you seal the illustrated areas. You must remove the clutches and belt housing backing plate to seal behind it.

It is required that you pull the clutch from your General to seal several areas on the outer clutch cover and the inner clutch cover. Seal where the clutch air outlet duct and clutch air inlet duct connect to the inner clutch cover. Also seal the area behind the inner clutch cover where the input and output shafts come through the inner system. **THIS IS VERY IMPORTANT!!!** If you do not seal these areas water **WILL** leak into the clutch system.



BEFORE YOU BEGIN



BEFORE YOU BEGIN

KEEP ALL FACTORY HARDWARE

Ensure vehicle is set to "PARK".

Turn key to "OFF" position.

Remove key from vehicle.

REMOVE PARTS

1

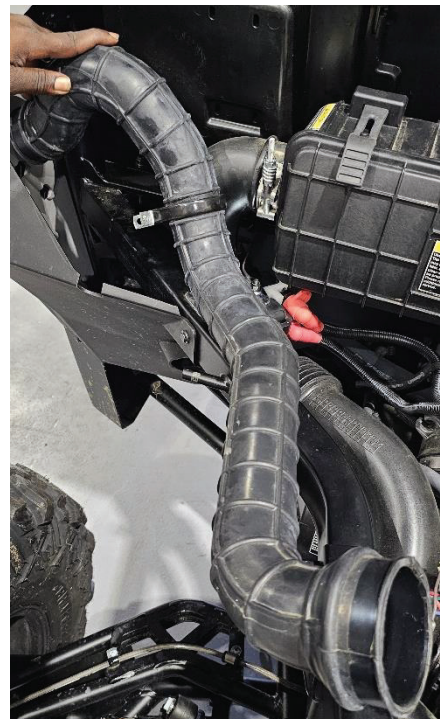


Remove these parts from your General 1000/1000XP:

Clutch exhaust

CVT #1 and #2

Airbox intake & hose duct



2

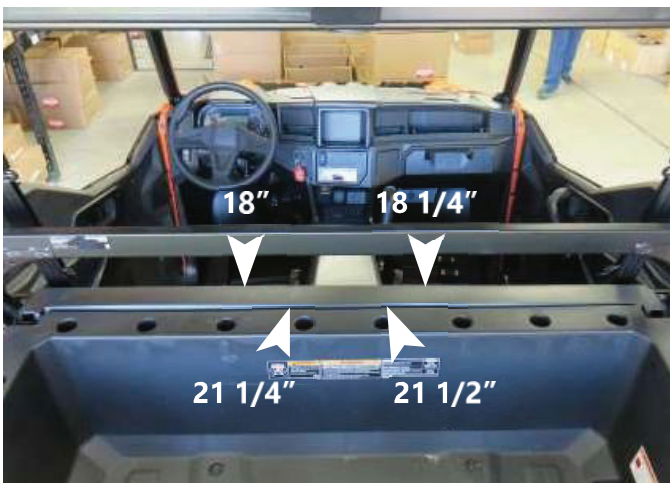
CVT FACTORY INLET



Apply silicone to seal the pinch valve located under the airbox.

3

MARK AND DRILL HOLES



Measure from the outside edges of the plastic inward to the distances shown above each hole. Mark the measurements in the plastic. This mark will be the center of each hole.

Drill holes in the locations shown with a 2 1/2" hole saw.

Results should look like this:



4

INLET HOSE 2



Using a #52 hose clamp, connect inlet hose 2 to the clutch cover, only loosely connecting for now.

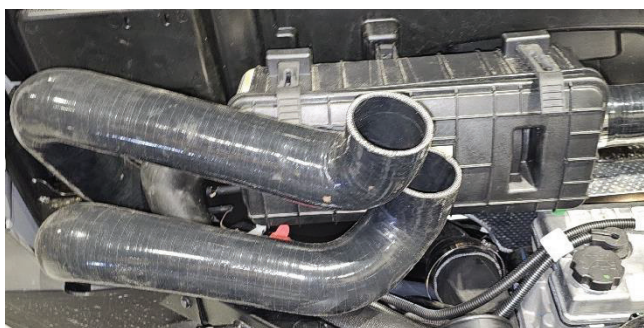
5

INLET HOSE 1



Using a #64 hose clamp, attach intake hose 1 to the inner clutch case, only loosely connecting for now.

NOTE: You may need to pull the heat shield away from the new hoses.



6

FOIL HEAT TAPE

Apply foil heat tape to the clutch exhaust and engine air intake hoses.

7

ATTACH HOSES

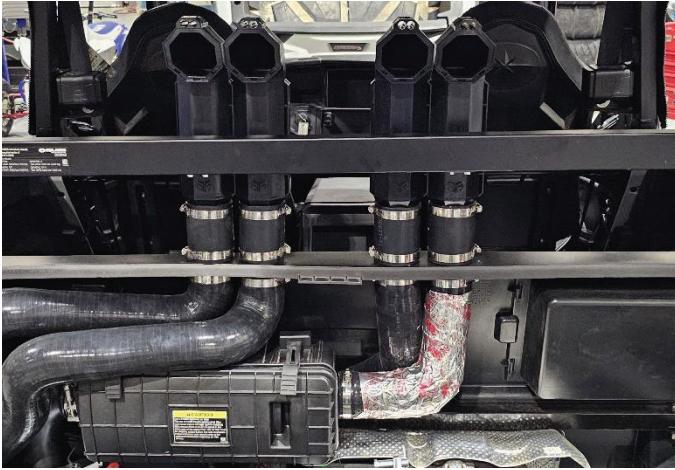


Using a #64 hose clamp, attach the clutch exhaust hose to the inner clutch case and route behind the air box. (This is behind the passenger seat))

Then, using a #40 clamp, attach the engine intake hose to the air box.

8

ALIGN HOSES



Align all of the new hoses to come up through the holes you drilled behind your seats in step 3. Once all hoses are in place, tighten all hose clamps.

Place ABS pipes into each hose and attach with #40 hose clamps.

Place #40 hose clamps on both ends of each end of the silicone couplings. Place one on top of each ABS.

Place a Warrior Riser on top of each coupling and tighten all clamps.



9

ATTACH STABILIZER BRACKETS



To keep risers from rattling, we have included stabilizer brackets. Using the self-tapping screws, attach one bracket per pair of risers to the bottom side of the crossbar and through the riser.



There are three vent lines to extend: transmission, fuel tank, and front differential. These lines should all be routed to a location higher than they come from the factory. Below are guidelines.

The transmission line starts at the top of the transmission on the passenger side. Remove it from the factory clips, then using a barb and vent line, extend this line along the drivers side frame and up to a Warrior Riser.

The fuel line starts at the fuel tank and is tucked into the frame. Using a barb and vent lines, extend this line up to a Warrior Riser.

The front differential can be ended into a bellow and zip-tied as close to the frame as possible to prevent getting caught on road debris, or can be extended using a barb and vent line, ending in a the bellow under the hood.

Warrior Risers are designed to hold vent lines for a sleek finish. You can use dummy lines for a symmetrical look. Be sure to zip-tie lines away from any heat sources, and do not pinch lines.

