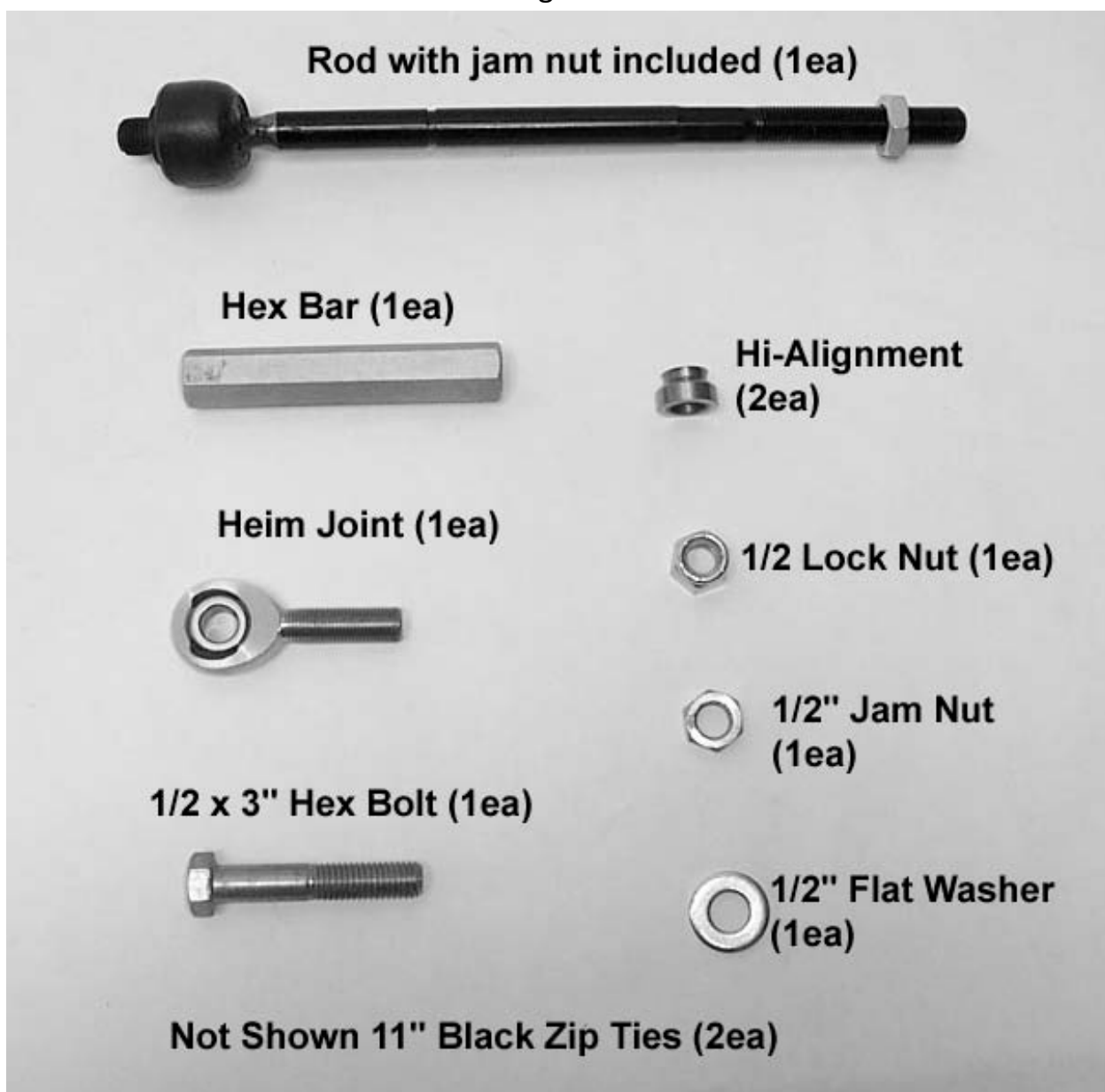




780 Professional Drive N Shreveport, LA 71105 Phone(318)524-2270

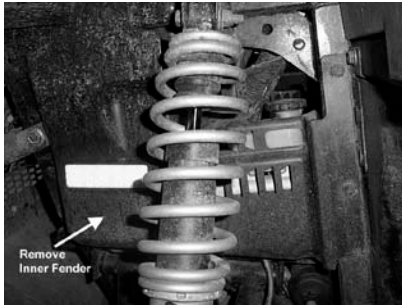
Polaris Ranger Replacement Tie Rod Kit for Rack and Pinion

Parts Diagram



Installation Instructions

1. Remove the front tire nearest the rod you are replacing.
2. Remove the inner fender. Make sure you have a rivet tool!



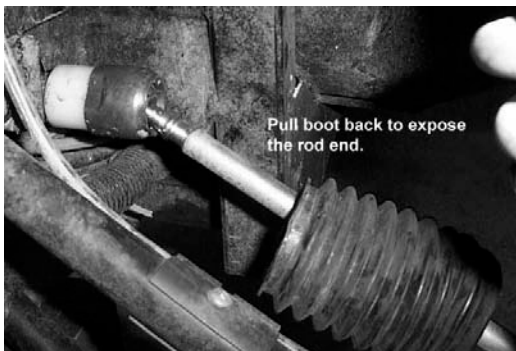
3. Disconnect the rod from the knuckle assembly.



4. Cut the plastic boot bands from the boot on the rack and pinion. The boot end to the inside is going to be difficult to cut and replace.



5. Once you have cut the bands pull the boot down to expose the end.



6. Using a wrench disconnect the rod from the rack and pinion.



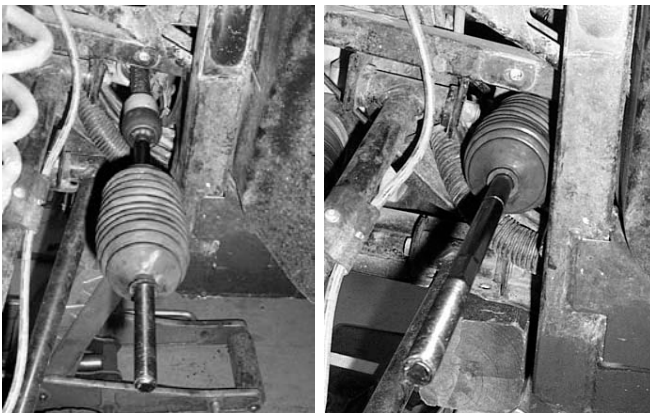
7. Now that you have removed the rod from the rack and pinion remove, end that connects to the knuckle assembly. Remove boot from the rod.



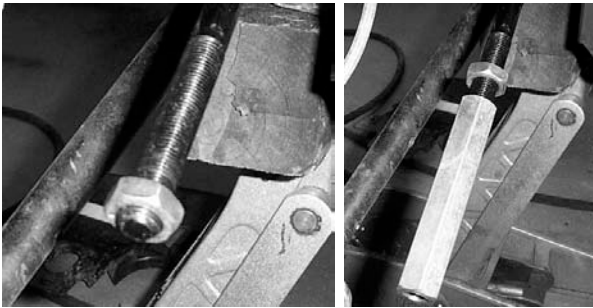
8. Place the boot on the new rod that comes with the kit. You may need to remove the jam nut that is preassembled onto the rod before you install the boot.



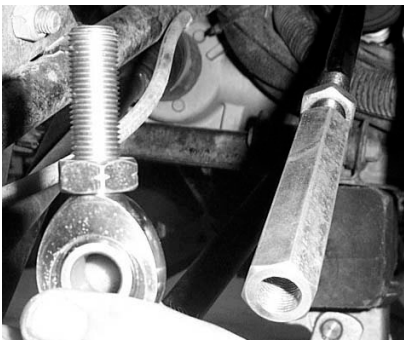
9. Connect the new rod to the rack and pinion and lid the boot over the joint. s



10. If you have not done so already install the jam nut back onto the rod end. Then, place the hex bar onto the rod.



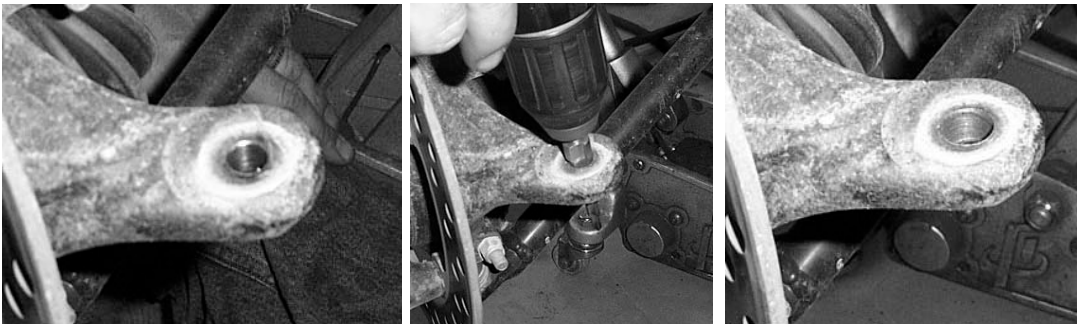
11. Locate the new heim joint and place the jam nut onto it. Make sure you run the jam nut all the way down to the bottom of the threads.



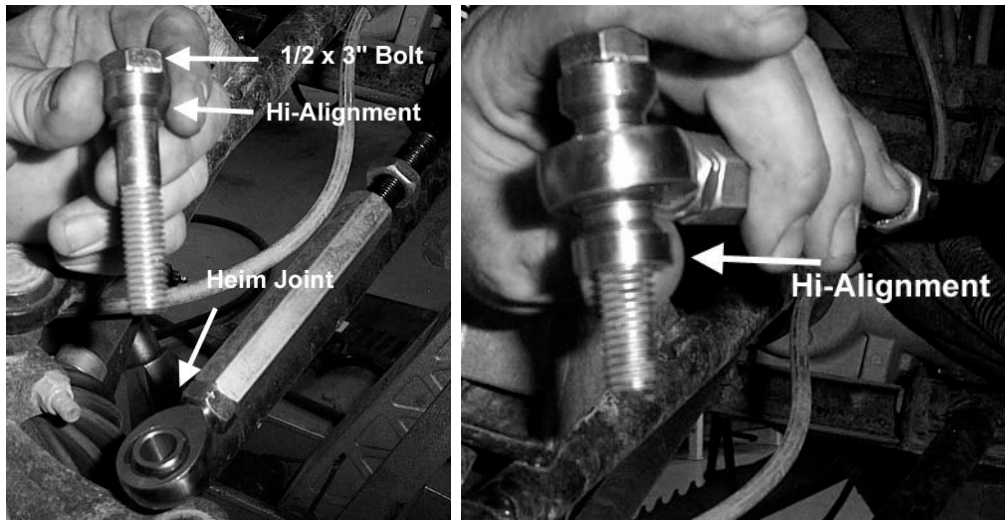
12. Install the heim joint into the hex bar.



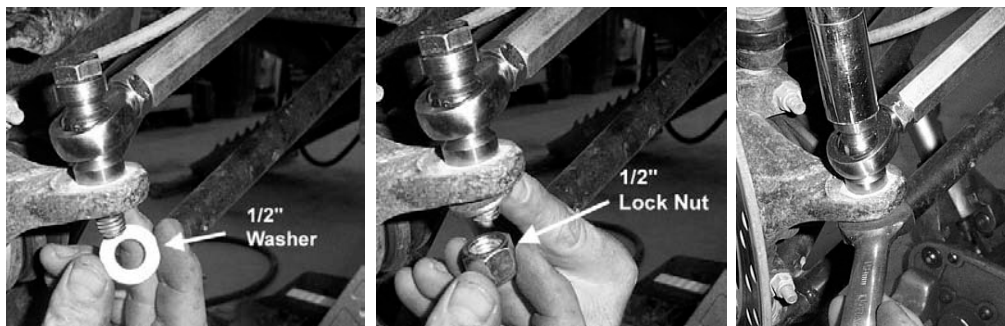
13. Using a 1/2" drill bit or equivalent, open the hole of the knuckle assembly to 1/2".



14. Take the ½ x 3" Hex Bolt and insert one of the Hi-Alignment spacers onto the bolt. Slide the bolt into the heim joint, then place another Hi-Alignment spacer onto the bolt.



15. Insert the bolt into the knuckle assembly. Place the ½" flat washer and ½" lock nut onto the bolt and tighten.



16. Using the black 11" zip ties provided fasten the boots tight. The boot end to the inside is going to be difficult!



17. Reinstall the inner fender and put tire back on the UTV.

Aligning the front wheels

1. Make sure that the tires are straight to sight.
2. Take a tape measure and measure from a flat spot on the front and back ends of the tire.
3. They must both be the same distance. If they do not then you will need to adjust the tie rods in or out.

NOTE: A slight toe out makes the steering less sensitive and the ATV more stable. When adjusting the toe, be sure to take the time to adjust both ends half the required distance.