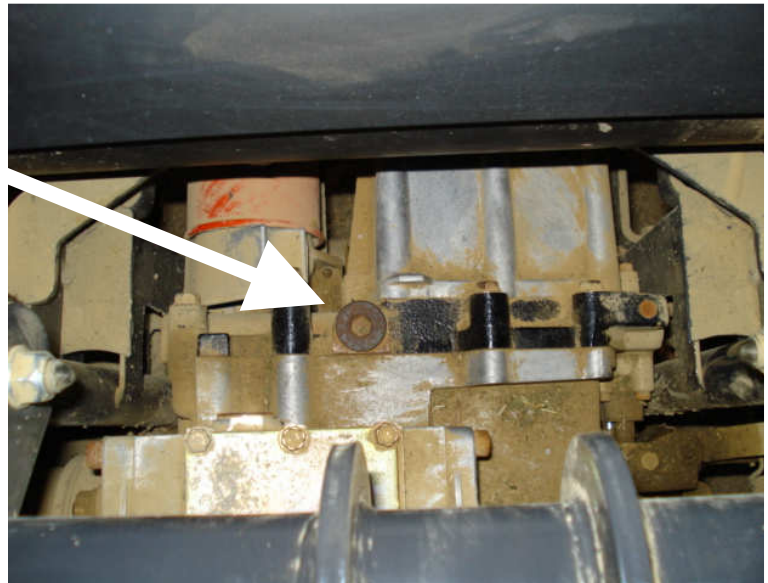


## Coast Valve Installation Instructions

- 1) On RTV 900 units with optional hydraulic dump, remove four hydraulic tank mounting bolts and raise tank to gain easier access to relief valve plug.



- 1a) On RTV1100 units, raise the bed and locate the relief valve plug by looking between the muffler and frame cross member.

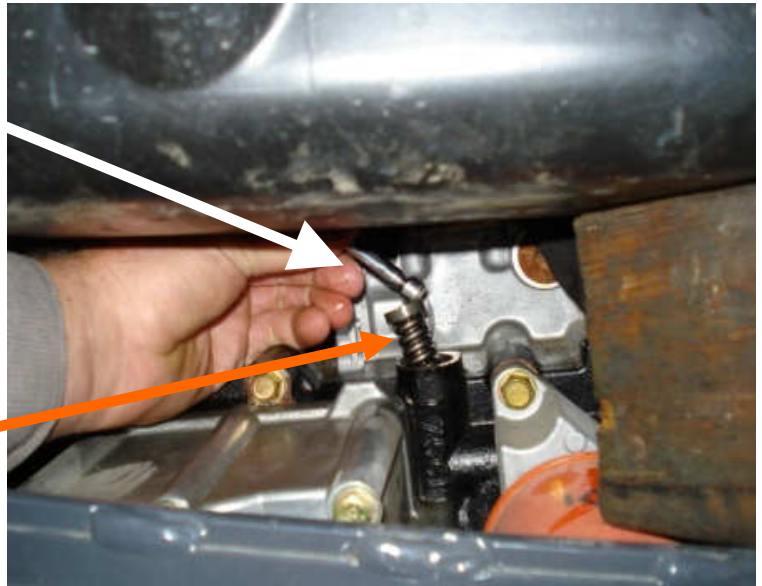


- 2) Clean all dirt and debris from area to prevent any contamination. Remove plug with 10mm hex wrench.



## Coast Valve Installation Instructions

- 3) Using a magnet, remove spring and relief valve.



- 4) Reassemble in this order:
- New coast valve  
- (discard old relief valve)
  - Hold down spring
  - Hex Plug
  - Hydraulic tank bolts, if applicable



- 5) Torque hex plug to **29-44 N-M (21-32 FT-LB)**