

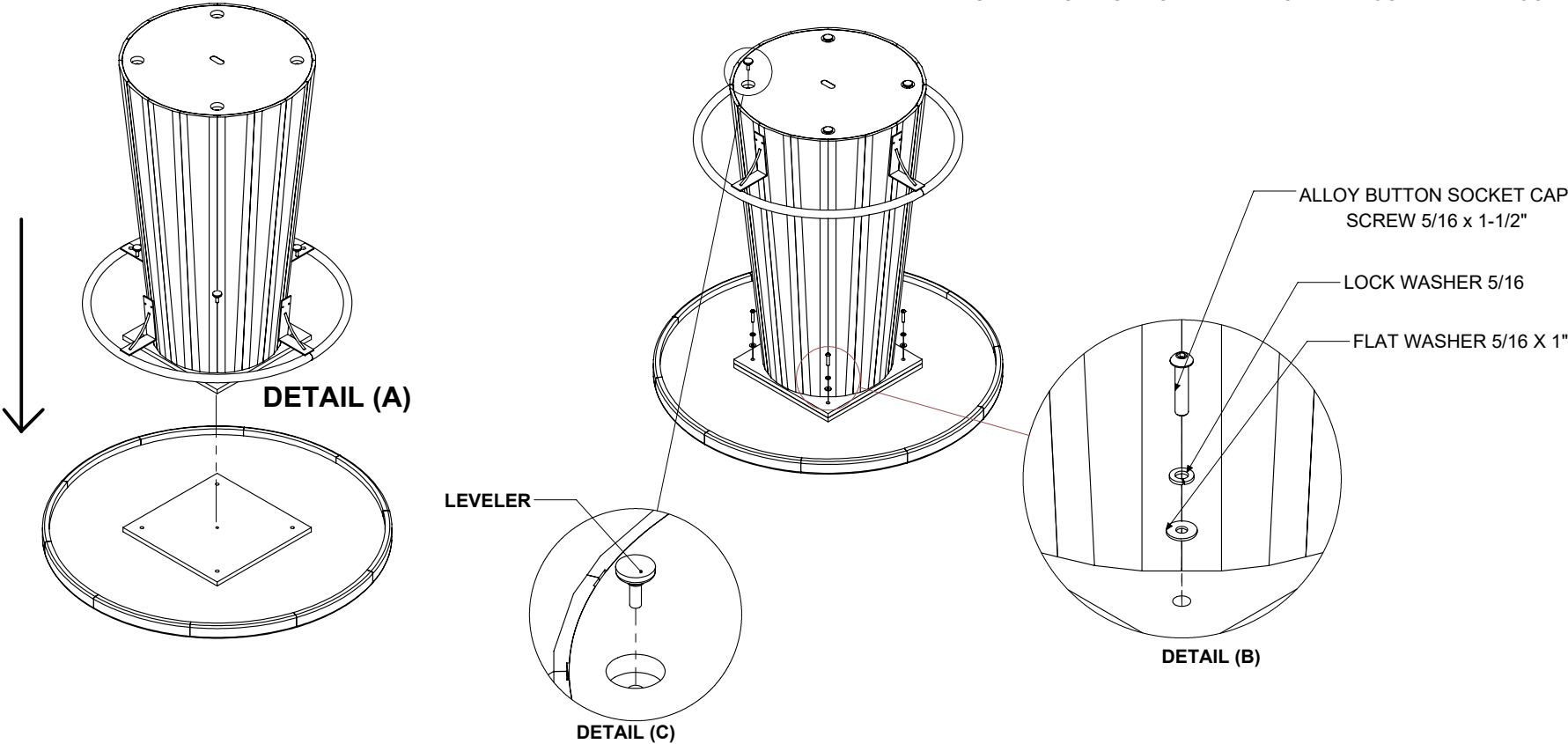
ASSEMBLY INSTRUCTIONS

STEP 1: BASE ALIGNMENT

PLACE THE TABLETOP UPSIDE DOWN ON A CLEAN, FLAT SURFACE (WITH THE HOLES FACING UP). THEN, WITH THE ASSISTANCE OF A HELPER, ALIGN THE BASE WITH THE HOLES, AS SHOWN IN DETAIL (A).

STEP 2: SECURING THE BASE

FINALLY, INSTALL THE HARDWARE BY ALIGNING IT WITH THE HOLES AND TIGHTEN USING THE 3/16" ALLEN WRENCH, AS SHOWN IN DETAIL (B). YOU CAN ALSO ADJUST THE HIDDEN LEVELERS SHOWN IN DETAIL (C). TURN THE UNIT UPRIGHT AND PLACE IT IN YOUR DESIRED LOCATION.



| DESCRIPTION | # |
|---|---|
| ALLOY BUTTON SOCKET CAP SCREW 5/16 x 1-1/2" | 4 |
| LOCK WASHER 5/16 | 4 |
| FLAT WASHER 5/16 X 1" | 4 |
| HEX KEY 3/16" | 1 |

I-BIS-E002