

## Installation Instructions for K10166, K10167, & K10168

### Alternator and power steering pump bracket for LS engines

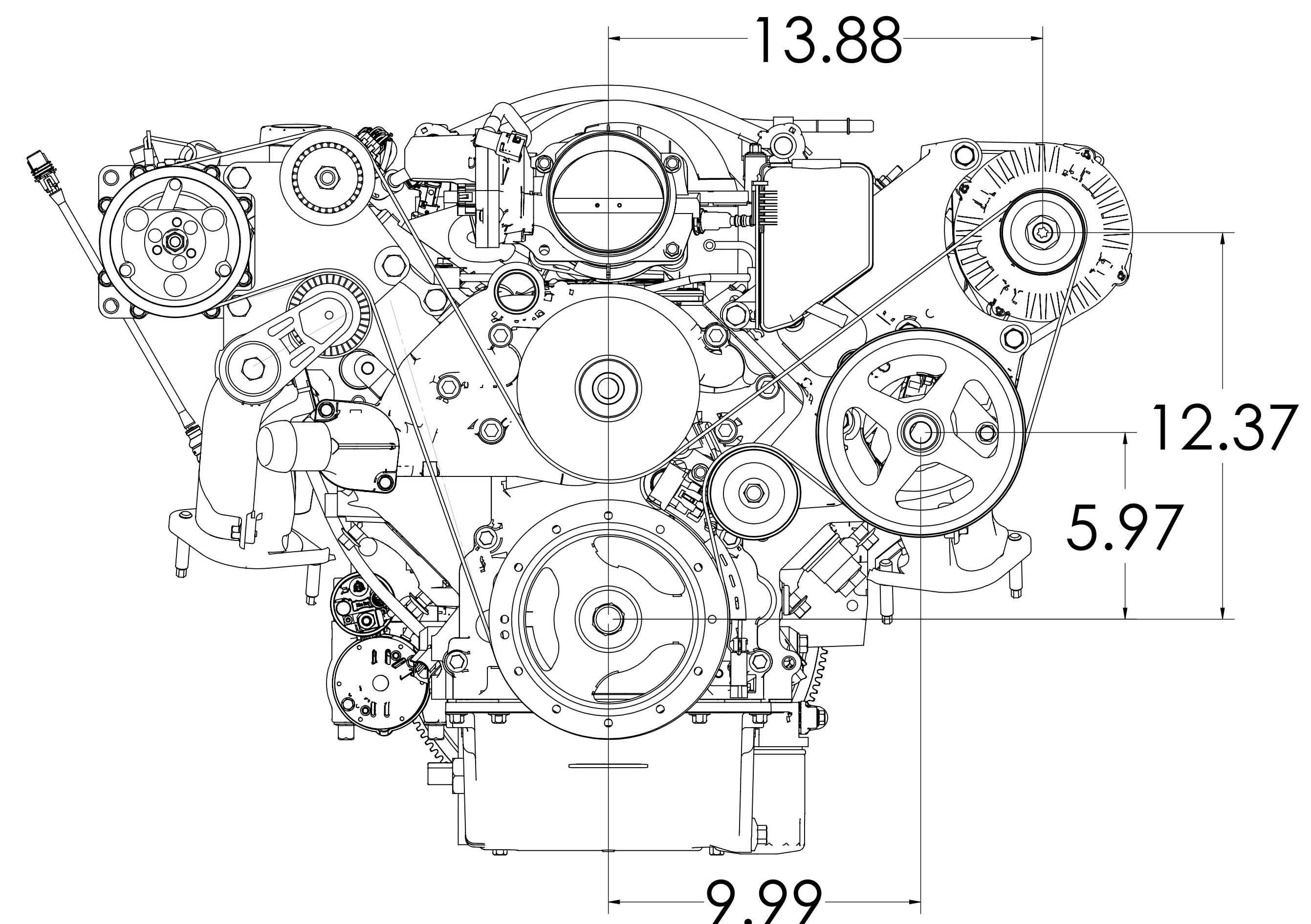
#### Kit contents:

- Mounting plates
- Spacer tubes
- Fasteners
- Idler pulley

#### Additional parts required:

- Alternator
- Power steering pump with pulley
- Belt. See chart below.

Belt length and Gates PN - K10166, K10167, K10168 using factory belt tensioner		
Power steering pulley diameter	Belt using factory tensioner	Belt using Kwik Performance AC bracket
6.7"	79" - K060785	See AC bracket instructions
6.0"	78 5/8" - K060780	
5.5"	78" - K060775	



**Belt installation**  
 With AC compressor



# Installation Instructions for: K10166, K10167, & K10168 alternator and power steering pump bracket



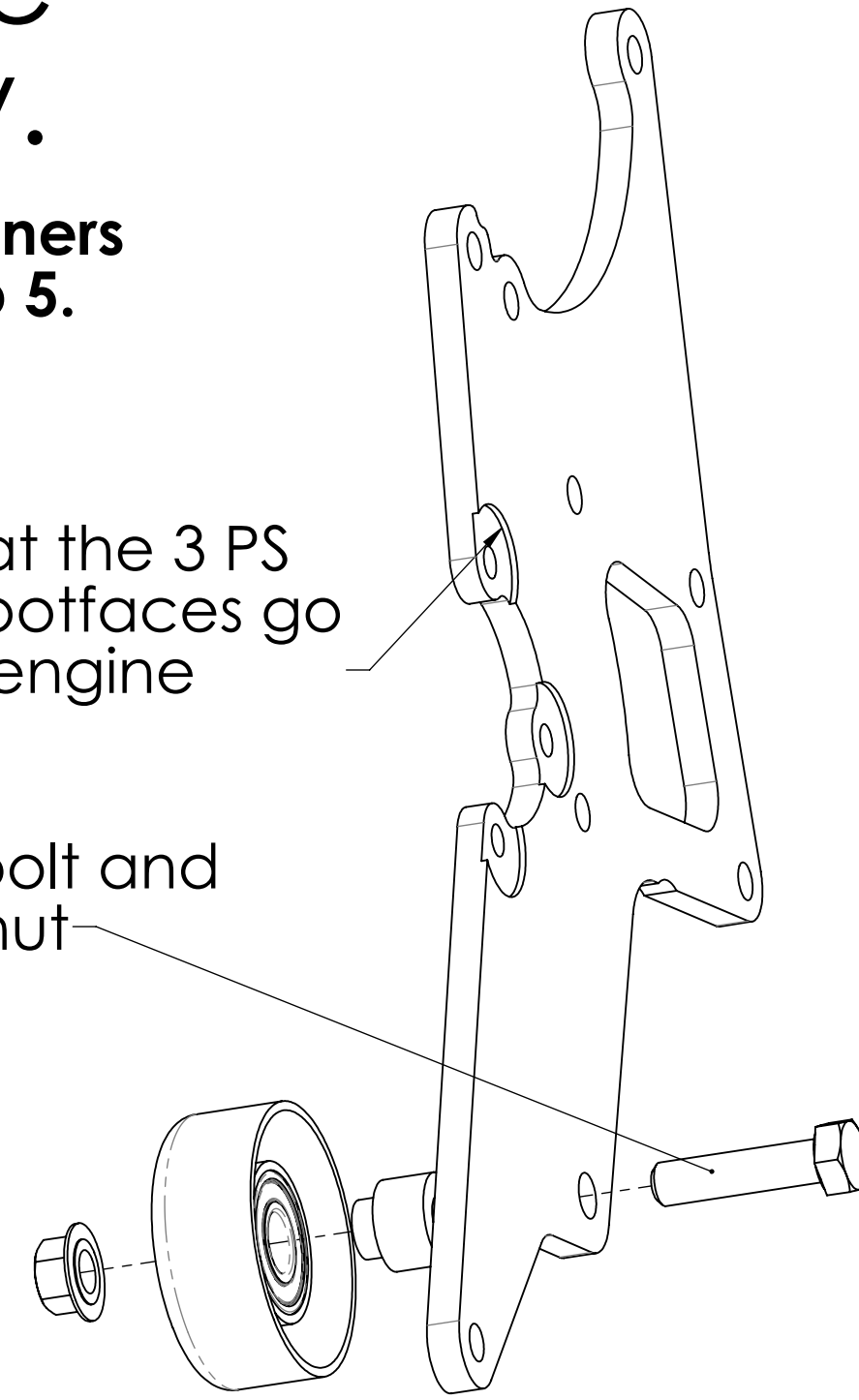
# Alternator and power steering pump bracket for LS engines

## 1. Assemble idler pulley.

**Note: Leave all fasteners  
finger tight until step 5.**

Note that the 3 PS  
pump spotfaces go  
toward engine

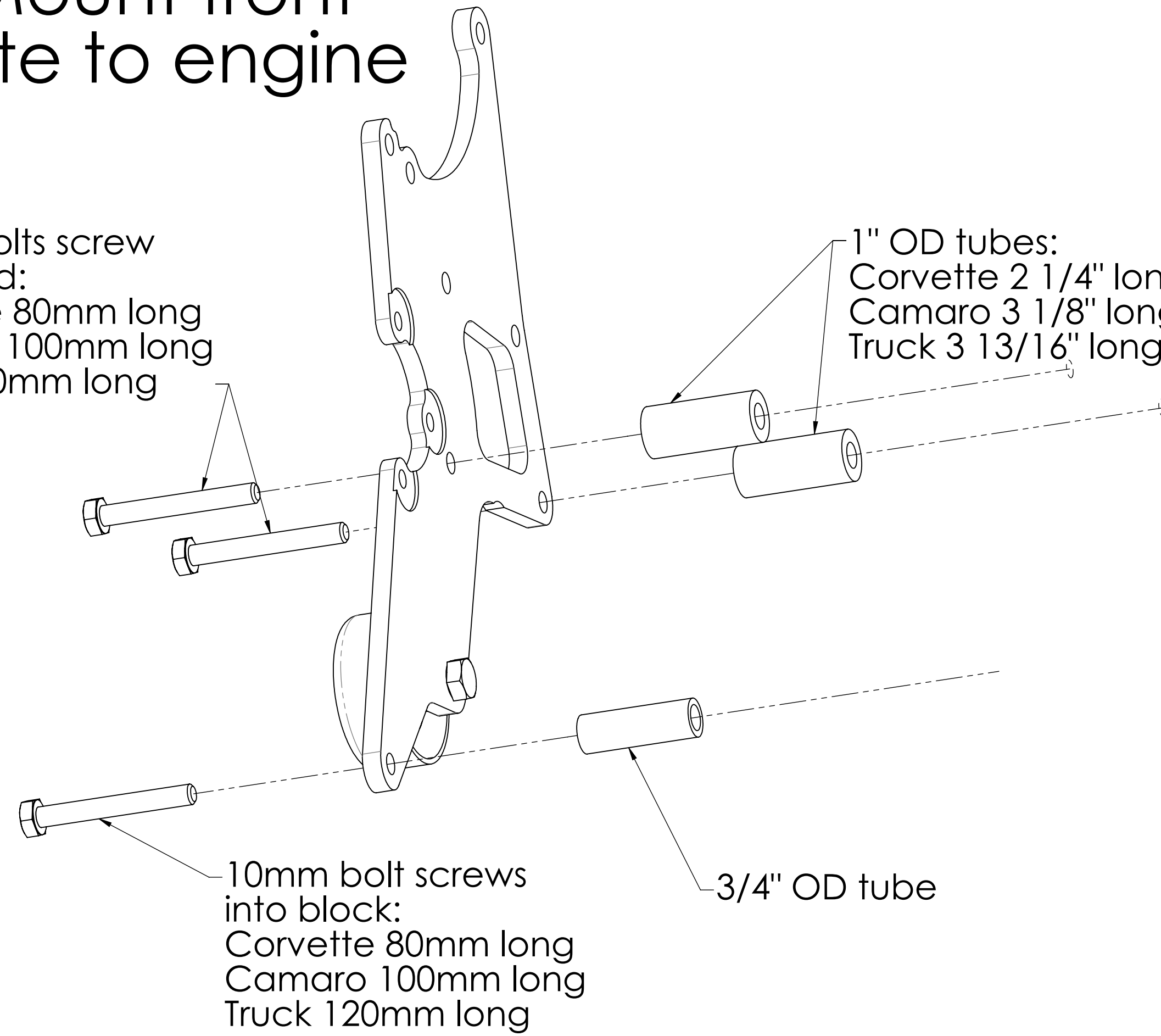
12mm bolt and  
flange nut



## 2. Mount front plate to engine

10mm bolts screw  
into head:  
Corvette 80mm long  
Camaro 100mm long  
Truck 120mm long

1" OD tubes:  
Corvette 2 1/4" long  
Camaro 3 1/8" long  
Truck 3 13/16" long



10mm bolt screws  
into block:  
Corvette 80mm long  
Camaro 100mm long  
Truck 120mm long

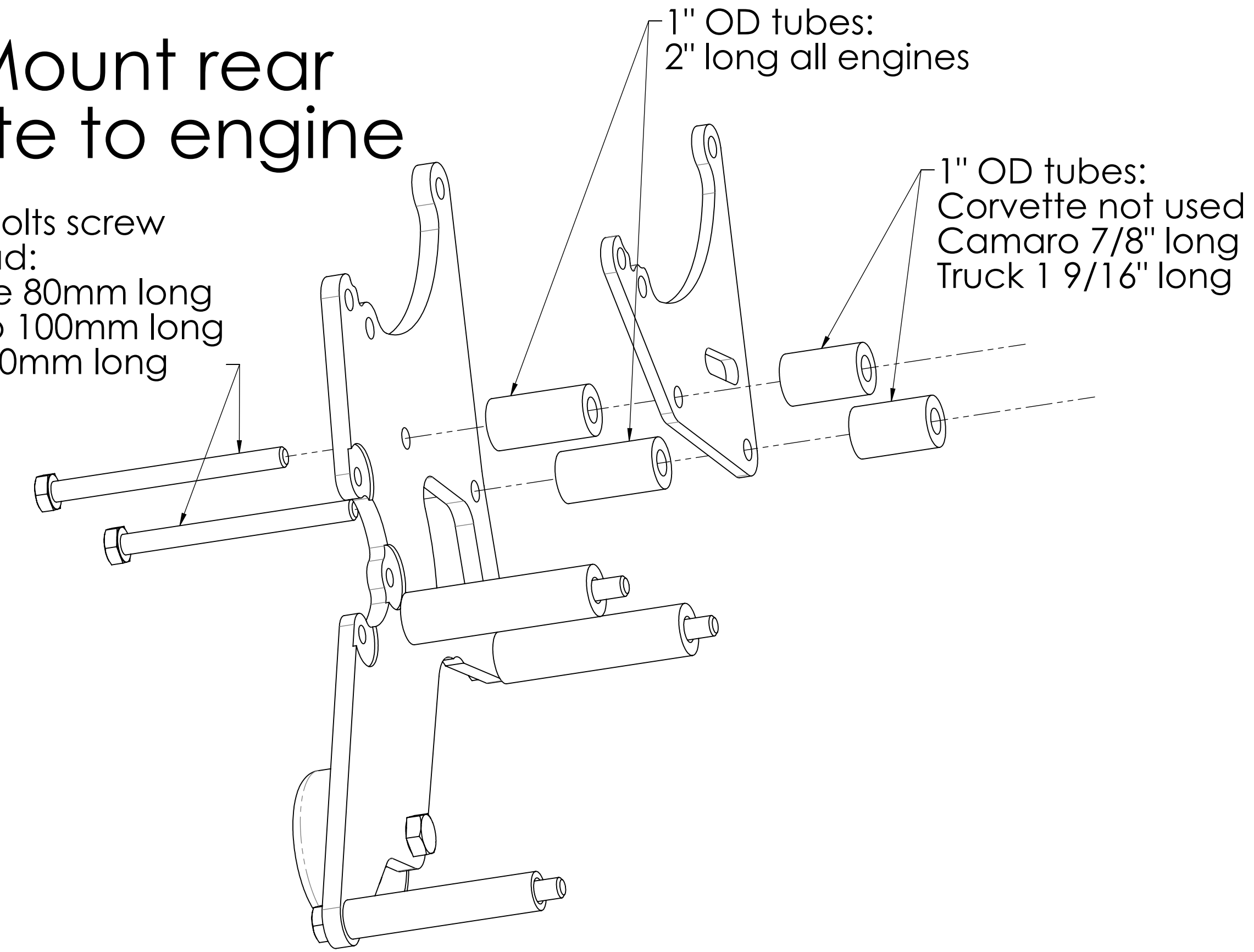
3/4" OD tube

## 3. Mount rear plate to engine

10mm bolts screw  
into head:  
Corvette 80mm long  
Camaro 100mm long  
Truck 120mm long

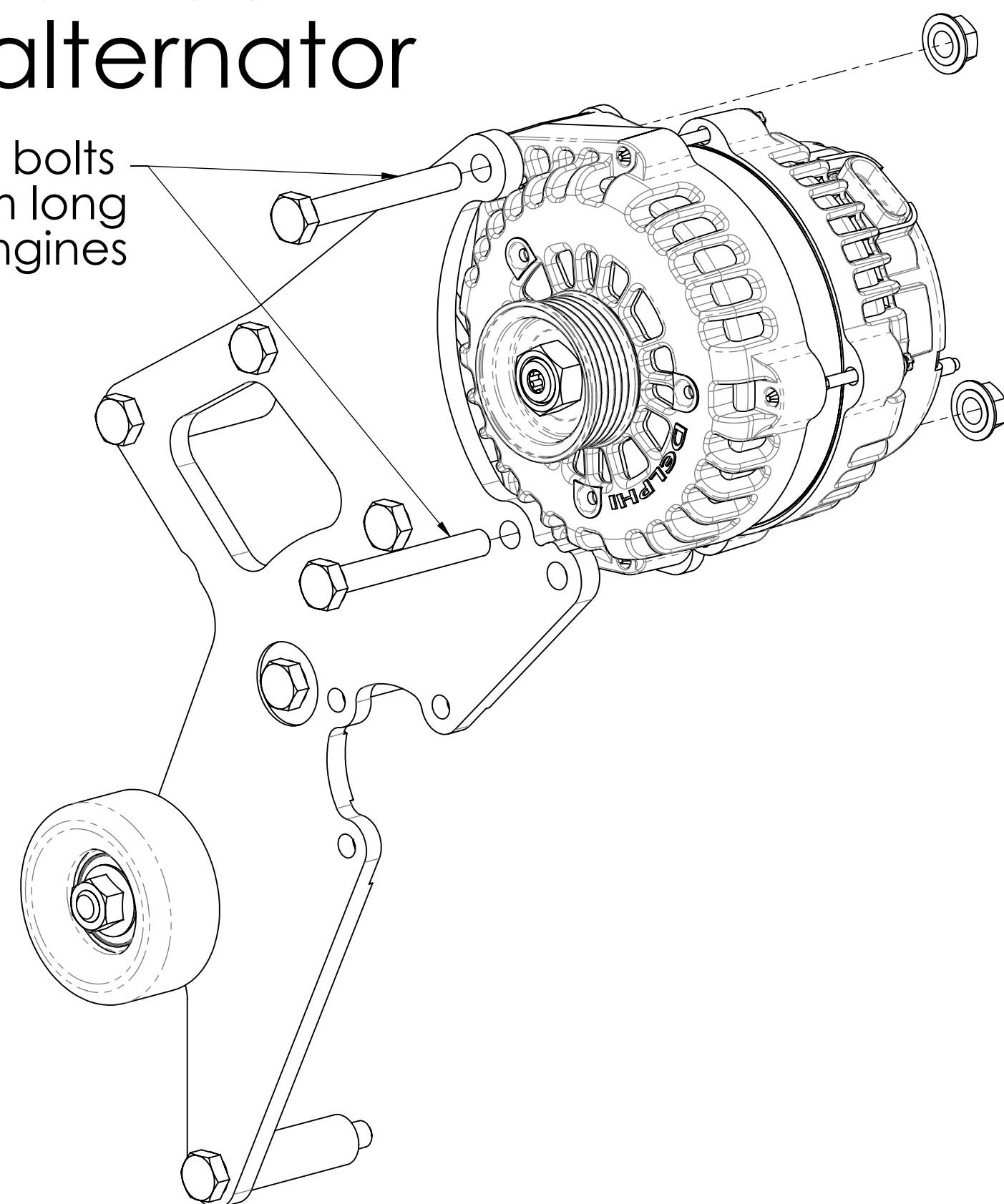
1" OD tubes:  
2" long all engines

1" OD tubes:  
Corvette not used  
Camaro 7/8" long  
Truck 1 9/16" long



## 4. Mount alternator

10mm bolts  
80mm long  
all engines



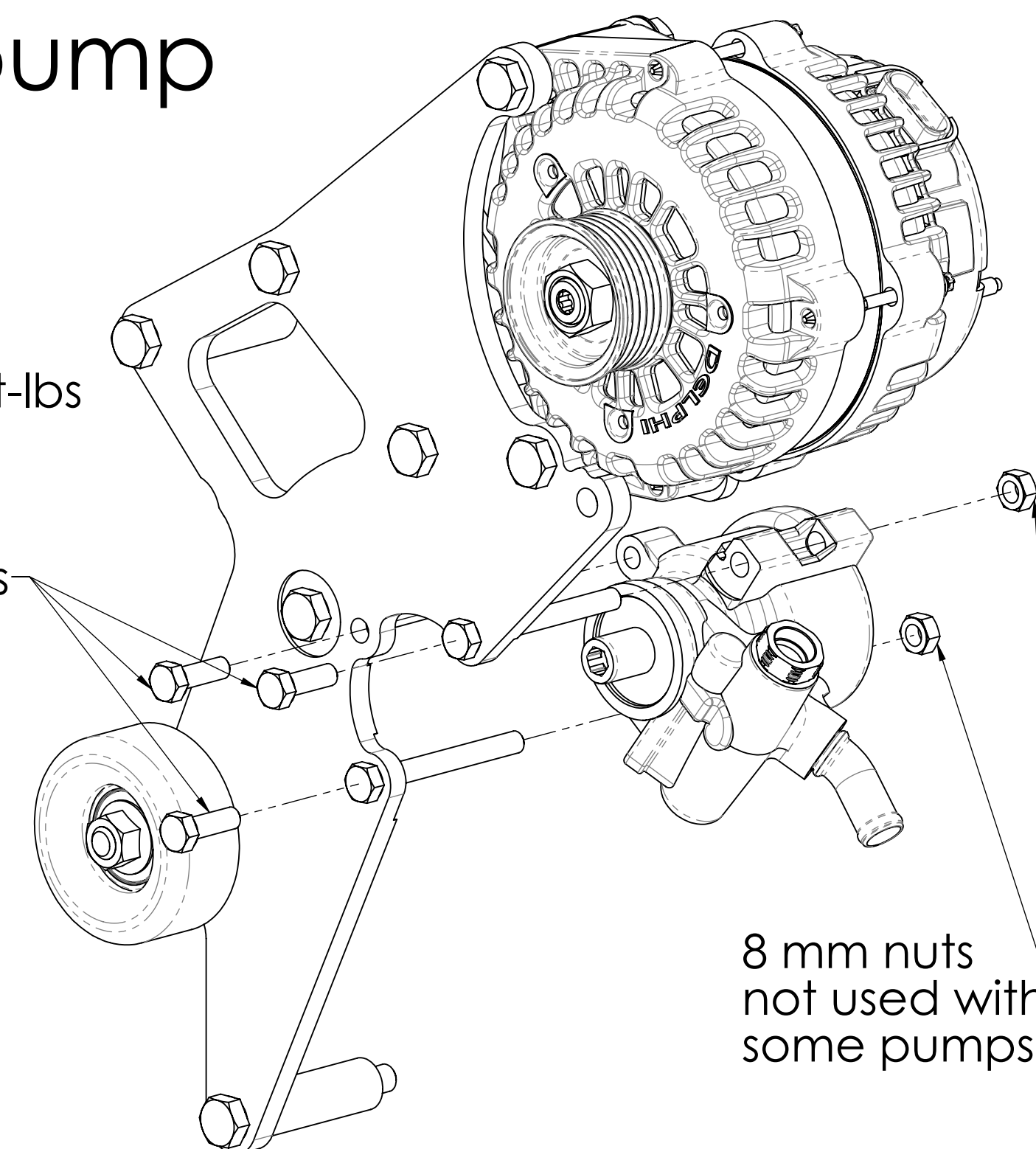
## 5. Torque fasteners:

12mm: 50 ft-lbs  
10mm: 37 ft-lbs

## 6. Mount power steering pump

8 mm bolts  
all engines  
Torque to 15 ft-lbs

Extra bolts are  
provided for  
various pumps



8 mm nuts  
not used with  
some pumps

## 7. Install power steering pulley.

Note: Some pulleys have windows in  
them for access to 8mm bolts. Pulley and  
pump can be installed as an assembly  
after torquing all 10mm bolts.

Because of the wide variety of pumps  
and pulleys that can be used, it may be  
necessary to slide the pulley fore or aft  
slightly on the pump shaft to align it with  
the crank pulley. Pump/pulley assemblies  
for a Gen 4 F-body engine will need an  
adjustment.

Kwik Performance pumps come with the  
pulley pre-installed in the correct  
location and can be bolted on as is.