

Catalog No. 15

# Catalog

OUTFITTERS  
Pack  
Station



## Welcome to Outfitters Pack Station!

Outfitters Pack Station is a small retail company located in the Pacific Northwest. We have been in the packing business for over 20 years and offer high quality pack saddles, packing supplies & accessories as well as camping equipment for the backcountry horse person. We have used the items you see in our catalog on many pack trips, which gives us the opportunity to test our products and improve them if necessary before we manufacture them for you.

All leather goods are made in our own shop, so we can guarantee the highest quality possible. Our products are innovative, with an eye toward both form and function. We only use U.S. leather hides from the best tanneries in the country.

### Harness Leather

10 – 12 oz & 12 -14 oz Harness Leather, which is drum dyed and hot stuffed with a special formula of natural oil waxes and tallow. It is still finished the old fashioned way, by using a glazing jack. This brings the oils to the surface which creates a rich look like none other.

### Chap Leather

We use 3 – 5 oz & 5 – 7 oz premium grade soft cowhides for lining (e.g. breast collars and breechings).

### Skirting Leather

10 -12 oz Skirting Leather is mostly used on the Formfitter Saddle tree and our Economy Pack Saddles.

Thank you for your interest in our products. We hope to meet your expectations of exceptionally high quality items, which you see on the following catalog pages. Here at the Outfitters Pack Station, we endeavor to help you in a friendly, down-home way. We work together, striving to serve you – our customers – who keep us in business. Special order inquiries are welcome.

Because almost every item is handmade in our shop, your order may take up to 14 days. Please call us about product availability.

We appreciate your business.

Outfitters Pack Station  
Wade & Simone Mauhl  
[www.outfitterspackstation.com](http://www.outfitterspackstation.com)  
[outfitterspackstation@yahoo.com](mailto:outfitterspackstation@yahoo.com)  
1-800-657-2644



[outfitterspackstation@yahoo.com](mailto:outfitterspackstation@yahoo.com)

[www.outfitterspackstation.com](http://www.outfitterspackstation.com)



# Table of Contents

## Pack Saddles

|                                 |        |
|---------------------------------|--------|
| Phillips Formfitter Pack Saddle | Page 1 |
| Decker Pack Saddle              | Page 2 |
| Sawbuck Pack Saddle             | Page 3 |

## Pack Panniers

|                              |        |
|------------------------------|--------|
| Hard Box Panniers            | Page 4 |
| Bear/Iron Cloth Box Panniers | Page 5 |
| Cordura Box Panniers         | Page 6 |
| Canvas Box Panniers          | Page 6 |
| Pannier Liners               | Page 6 |
| Hauls-All Panniers           | Page 7 |
| Gravel Panniers              | Page 7 |
| Sling Panniers               | Page 8 |
| Utah/Meat Panniers           | Page 8 |
| Western Riding Pannier       | Page 8 |

## Pack Supplies & Accessories

|                          |         |
|--------------------------|---------|
| Half Breed               | Page 9  |
| Pack Saddle Pad          | Page 9  |
| Manties                  | Page 9  |
| Pack Cinches             | Page 9  |
| Lash Cinch               | Page 10 |
| Top Packs                | Page 10 |
| Pack Saddle Cover        | Page 10 |
| Pack Scales              | Page 11 |
| Alforjas or Decker Hooks | Page 11 |
| Feed Bags                | Page 11 |
| Packing Books            | Page 12 |

## Tack

|                  |               |
|------------------|---------------|
| Halters          | Page 13       |
| Riding Cinch     | Page 13       |
| Breast Collars   | Page 13       |
| Riding Breeching | Page 13       |
| Hobbles          | Page 14       |
| Cruppers         | Pages 14 & 15 |
| Horn Bags        | Page 15       |
| Saddle Bags      | Pages 15 & 16 |

## Gun & Bow Scabbards

|                 |         |
|-----------------|---------|
| Rifle Scabbards | Page 16 |
| Bow Scabbards   | Page 16 |

## Saws

|            |         |
|------------|---------|
| Dandy Saws | Page 17 |
|------------|---------|

## Leather Covers

|              |         |
|--------------|---------|
| Axe Covers   | Page 17 |
| Shovel Cover | Page 17 |

## Camping Equipment

|                              |         |
|------------------------------|---------|
| Wall Tents                   | Page 18 |
| Tent Angles & Sleeves        | Page 18 |
| Tent Treatment               | Page 18 |
| Riley's Tent Stoves          | Page 19 |
| Tent Accessories & Furniture | Page 20 |

## Dutch Oven

|                        |               |
|------------------------|---------------|
| Aluminum Dutch Ovens   | Page 21       |
| Cast Iron Dutch Ovens  | Page 21       |
| Dutch Oven Accessories | Page 21       |
| Dutch Oven Cook Books  | Pages 22 & 23 |

## Miscellaneous

|                            |         |
|----------------------------|---------|
| Rope                       | Page 24 |
| Little Magic Fire Starters | Page 24 |
| Knot Eliminators           | Page 24 |
| Tree saver                 | Page 24 |
| Hardware                   | Page 25 |
| Knot Playing Cards         | Page 25 |
| Leather Treatments         | Page 25 |

## Fencing & Tools

|                     |         |
|---------------------|---------|
| Portable Corral Kit | Page 26 |
| Plammer's Pliers    | Page 26 |

## Barn & Trailer

|                        |         |
|------------------------|---------|
| Half Moon Water Caddy  | Page 26 |
| Slant Load Water Caddy | Page 26 |
| EZ-Grip Mat Mover      | Page 26 |
| Trailer/RV Entry Step  | Page 26 |

## Farrier Items

|                    |         |
|--------------------|---------|
| Farrier Stand      | Page 27 |
| Farrier Caddy      | Page 27 |
| Farrier Tool Pouch | Page 27 |

## Apparel

|                   |         |
|-------------------|---------|
| Rain Slicker      | Page 27 |
| Rancher Wool Vest | Page 27 |





## Pack Saddles



### Phillips Formfitter Pack Saddle (Item# 1400)

The Phillips Formfitter is unquestionably a phenomenal pack saddle. It doesn't have a rigid tree. Instead the left and right side of the pack saddle move independently with the movement of the animal at all times. The front part moves up and down, following the shoulder movement and the panels (left and right) move sideward. That allows the tree to fit just about any animal. The tree bases are 23 inches long and made out of a unique polyurethane blend. It makes them durable with some flexibility, even in cold weather conditions. The tree bases have full leather sheath and fleece on the bottom. The tree bars are made out of a 60/61 aluminum and powder coated.

The rigging straps coming off the saddle can be easily adjusted with roller buckles. We loop the straps around the tree bars from the outside to the inside and buckle them in the center. That provides more stability and distributes the pressure of the saddle tree equally from front to back.



The breeching spider utilizes four straps instead of two. The straps going to the breeching have buckle covers, so the tail hair won't catch in the buckles. The breeching and breast collar are 2.5 inches wide and fully lined with soft chap leather.

All straps are made out of high quality 12 – 14 oz. oiled harness leather. The pack saddle comes standard with nickel plated hardware (upon request stainless steel or brass hardware can be substituted at extra cost).

The saddle comes complete with the half breed and a cinch (please specify size when you order). You can order the Formfitter Pack Saddle with a single or double rigging.

We do sell the Phillips Formfitter Tree separately. If you already own a Sawbuck or Decker Pack Saddle, it would make it easy to switch over the tree only. Roller buckles are attached to the center of the tree to attach the rigging.



1



[outfitterspackstation@yahoo.com](mailto:outfitterspackstation@yahoo.com)

1-800-657-2644

[www.outfitterspackstation.com](http://www.outfitterspackstation.com)





## Decker Pack Saddle ( Item# 1403-1 )

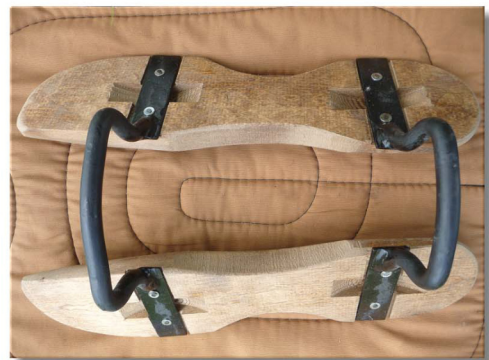
The Decker Pack Saddle comes complete with the half breed and a cinch (please specify size when you order) at no extra cost! The saddle can be rigged with a single or double cinch. All straps are made out of high quality 12 – 14 oz. oiled harness leather. The breeching spider utilizes four straps instead of two. The straps going to the breeching have buckle covers, so the tail hair won't catch in the buckles. The breeching and breast collar are 2.5 inches wide and fully lined with soft chap leather. The rigging straps coming off the saddle can be easily adjusted with roller buckles. We loop the straps around the tree bars from the outside to the inside and buckle them in the center. That provides more stability and distributes the pressure of the saddle tree equally from front to back.

The pack saddle comes standard with nickel plated hardware (upon request stainless steel or brass hardware can be substituted at extra cost). We use roller buckles instead of Conway buckles for easy adjustment. The black enameled Decker Irons on this saddle are made of ¾ inch round steel. The wood is pine.



## Economy Decker Pack Saddle

This is our Economy Decker Pack Saddle. It is made with 12-14 oz. oiled skirting leather all around. We oil the leather several times to soften it. The breast collar and breeching are 2 ½ inches wide and not lined. We use Conway buckles instead of roller buckles for adjustment. The Pack Saddle only comes with a cinch (please specify size when you order), but no half breed. The black enameled Decker Irons on this saddle are made of ¾ inch round steel. The wood is pine.



[outfitterspackstation@yahoo.com](mailto:outfitterspackstation@yahoo.com)



1-800-657-2644

[www.outfitterspackstation.com](http://www.outfitterspackstation.com)





### **Sawbuck Pack Saddle (Item# 1402-1)**

This saddle is made in our saddle shop. The forks on the saddle are made of 1-3/4 inch Oregon oak. Sideboards are pine because of its light weight and resistance to cracking. Stained, sealed, and 1-1/4 inch strap slots are provided for rigging. We use 12-14 oz. oiled harness leather. The saddle has a fully lined breeching and breast collar. We use roller buckles and put buckle covers on the straps that are attached to the breeching.

The Pack Saddle comes standard with nickel plated hardware (upon request stainless steel or brass hardware can be substituted at extra cost).

The Pack Saddle comes with a Pack Cinch. Please specify the size when you order.



### **Economy Sawbuck Pack Saddle (Item# 1413-1)**

This is our Economy Sawbuck Pack Saddle. It is made with 12-14 oz. oiled skirting leather all around. We oil the leather several times to soften it. The breast collar and breeching are 2 1/2 inches wide and not lined. We use Conway buckles instead of roller buckles for easy adjustment. The Pack Saddle comes with a cinch. Please specify size when you order.

The forks on the saddle tree are made of 1-3/4 inch Oregon oak. Sideboards are pine because of its light weight and resistance to cracking. Stained, sealed, and 1-1/4 inch strap slots are provided for rigging. We use nickel plated hardware.

This pack saddle is a good product for a great price.

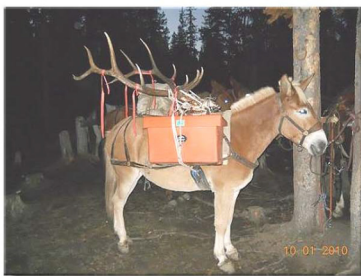


Humane Tree  
[outfitterspackstation@yahoo.com](mailto:outfitterspackstation@yahoo.com)



Tehoma Tree  
[www.outfitterspackstation.com](http://www.outfitterspackstation.com)





## Pack Panniers

### Bear Resistant Panniers (Item# 1119-1)



Our Bear Resistant Panniers can be used in any bear restricted area in the U.S.. They are tough, hard resin polyethylene boxes and U.S. Forest Service approved. The boxes have a large opening for storage. The lid has 8 x 5/16 threaded wing bolts to hold the top down. The Bear Proof Panniers won't break in extreme cold. These tough, durable panniers accommodate screw-in legs for use as a table (legs sold separately).

Size: 29"L x 14"W x 18"H, Weight: 18 pounds each. Sold in a set of two. Available colors: orange, green & brown.



### Hard Panniers (Item# 1103-1)

Our Hard Panniers are constructed of super-tough polyethylene plastic. The back sides are curved to fit your horse. The molded-in tabs secure the lid in table position. No screws or bolts to work loose. The lid is held in place by nylon straps. The Panniers attach to the saddle with heavy, 2 inch polypropylene straps, closed with roller buckles. The straps pass through slots in box sides and are attached to a PVC tube within for extra strength & easy adjustment.

Size: 29"L x 14"W x 18"H. Sold in a set of two. Available in green, orange and brown.

All hard panniers come with screw inserts to install metal legs (sold separately).



Pannier Legs

4



[outfitterspackstation@yahoo.com](mailto:outfitterspackstation@yahoo.com)

1-800-657-2644

[www.outfitterspackstation.com](http://www.outfitterspackstation.com)





## **Bear Cloth ( Iron Cloth ) Box Panniers ( Item# 1105-1 )**

Bear cloth (Iron cloth) is a phenomenal product made of 28 oz. Armor Duck material. It is washable, incredibly durable, versatile, and won't fray or rip.

Our Bear Cloth Panniers have contoured lids, 3 x 2" heavy duty polypropylene webbing all the way around the pannier and reinforced leather corners. Along with the outstanding strength of the actual material, it makes these panniers one of the best items on the market. The top straps are made out of 12 -14 oz. oiled harness leather, reinforced with heavy duty polypropylene webbing. The straps are 1 1/2" wide x 40" long.

Standard size measures 24"Lx17"Hx12"W. Comes as a set of two.

Ask us about our new oversized Box Panniers: 27"Lx15"Hx18"W, big enough to fit a cooler inside (e.g. Coleman 52 qt. Xtreme cooler). Call us for more details.



[outfitterspackstation@yahoo.com](mailto:outfitterspackstation@yahoo.com)



[www.outfitterspackstation.com](http://www.outfitterspackstation.com)





### **Cordura Box Panniers** ( Item# 1101-1 )

The Cordura Pannier comes with heavy duty 1 ½" polypropylene webbing handles and has a full contoured lid. The cordura is vinyl-lined for a long-lasting product.

Available in color brown, green and orange; comes in a set of two. Measurements: 24"Lx 17"Hx12"W; our Pannier Liners fit inside.



### **Canvas Box Panniers** ( Item# 1106-1 )

The Traditional Canvas Pannier has leather ends and is made out of a #4 natural canvas with a 9-10 oz. leather on the sides.

Measurements: 24"L x 17"H x 12"W. Sold in a set of two.

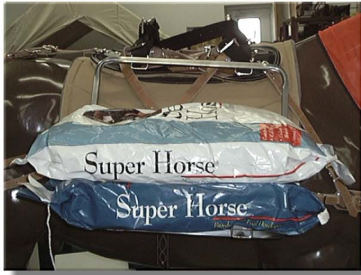


### **Pannier Liners** ( Item# 1104-1 )

Hard Pannier Liner. This heavy-gauge plastic liner is nearly indestructible. Each Pannier Liner measures 23 x 16 x 11 inches and fits inside standard soft panniers. Weight: 5 pounds each.

The Liners are sold individually. If you are rigging Pack Saddle Panniers, buy two.





### Hauls-All Panniers (Item# 1120-1)

This Hauls-All Pannier carries: 48 quart coolers, hay bales, bags of feed, salt blocks, elk quarters, post & poles, or 5 gallon propane bottles. Made of tubular steel and powder-coated to last. Bottom platform folds up for easy storage and packing. Sold in a set of two.



### Gravel Panniers (Item# 1121-1)

This Gravel Pannier is a great tool for trail work. The bottom folds up and you put sand or gravel in the top. You then drop the bottom and it will unload over the spot you want on the trail. Sold as a set of 2.





### Sling Panniers ( Item# 1112-1 )

These Sling Panniers can be used to haul almost anything: hay bales, coolers, propane tanks. It's just a good all-around pannier. Sold as a set of two.

We make the Sling Panniers out of the Bear Cloth and Canvas material. Length 63" x Width 24".



### Utah ( Meat ) Panniers ( Item# 1115-1 )

This Pannier Set can carry anything, but it is ideal for packing bulky things like meat. The Panniers are made of the Bear Cloth (Iron Cloth) material. This incredibly tough fabric does not rot or mildew. The handle loops are made out of a double stitched latigo leather. The top strap goes over the saddle from one pannier to the other and measures 6 ft.

Size of each Pannier is 32" x 23". Comes as a set of two.



### Western Riding Panniers ( Item# 1109-1 )

Western Riding Saddle Panniers are for folks who do more riding than packing but still need to carry sleeping bags and other camping supplies.

The panniers fit over a western riding saddle. We attached many rings to the panniers, so you can strap them down securely. The Western Riding Saddle Pannier is about the same size as other panniers and is made of the same tough Cordura fabric. Our Pannier liners fit inside the panniers.

[outfitterspackstation@yahoo.com](mailto:outfitterspackstation@yahoo.com)



[www.outfitterspackstation.com](http://www.outfitterspackstation.com)

1-800-657-2644



## Pack Supplies and Accessories



### **Half Breed** ( Item# halfbreed1 )

High quality Half Breed made in our own shop. It measures 39"L x 26"W. The canvas is a heavy duty #4 natural canvas. The leather is an oiled 5/6 oz. material that will last a long time. This is a great Half Breed!



### **Pack Saddle Pad** ( Item# 1900-1 )

Our Pack Pad is constructed with waterproof marine duck canvas & 1 inch thick. It measures 32 x 48 inches. It has 3 layers of a felt/wool material instead of only 1 solid piece. The layers and the way the canvas are sewed together will help prevent the pad from sliding out from underneath the pack saddle.



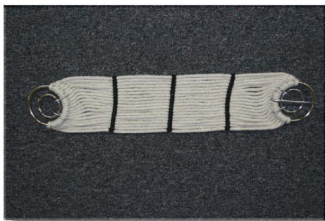
### **Manties** ( Item# 1008-1 )

Manties are great for packing odd-sized items. OPS double-fill, duck canvas manties are strong and will hold up under repeated stress. Our 7'x 8' manties keep moisture out.



### **Double Pack Cinch** ( Item# 1700 )

The material is a natural colored cotton/wool blend with 34 strings. Both sides have double rings and the smaller ring is attached with a flexible S - hook. One side has metal tongues which gives the option to use billets. Be aware that the cinches stretch about 1 - 2 inches.



### **Single Pack Cinch** ( Item# 1704 )

The material is a natural colored cotton/wool blend with 19 strings. Both sides have double rings and the smaller ring is attached with a flexible S - hook. One side has metal tongues which gives the option to use billets. Please be aware that the cinches stretch about 2 inches.



### **Hunter Cinch** ( Item# 1714 )

Hunter Cinch, made out of a 50% Mohair/50% Poly blend.





### **Lash Cinch** ( Item# 1719 )

4 inch wide heavy-duty canvas. 12 - 14 oz. leather on each end. Overall length 35 inches. 3 inch ring on one end, brass hook on the other end.



### **Lash Cinch with 52 ft. Rope** ( Item# 1720 )

The Lash Cinch is made of a solid woven 4 ply #16 cotton, 4" wide x 35" long (overall length, including the hardware). The leather ends are attached with 3 rivets and sewn. The ring on one end is 3" and the hook is solid brass. The cinch comes with 1/2" x 52 ft. poly dacron rope.



### **Straight Top Pack** ( Item# 812-1 )

### **H-Style Top Pack** ( Item# 811-1 )

The Top Packs are great for bulky items, such as tents, clothes and sleeping bags. It's made out of a water resistant, heavy duty Cordura material. The H-Style Top Pack has the same size as the straight Top Pack. The "H" cut out measures 10" on each side. The H-Style Top Pack is made to fit on a Sawbuck or Decker style pack saddle. The "H" shape allows it to fit securely over the tree. Both packs come with rain flaps which cover the zipper and heavy duty leather straps for tie-down. Measurements: 38" x 29" x 10". Standard colors: Brown and Orange.



### **Pack Saddle Cover** ( Item# 1123-1 )

The Pack Saddle Cover is designed to put over the Top Pack to keep it dry and clean. It has a grommet hole on each corner. The Top Cover comes in brown, orange or green. The length of the flap on each side is 13" wide x 36" long. The cover measures 23" in length in the center.







**Left - Pack Scale w/o Cable Hanger** ( Item# 446 )

**Right - Pack Scale with Cable Hanger** ( Item# packscale-1 )

The 100 Pack Scale measures from 20 to 100 lbs. in 16 oz. increments. This extreme duty scale measures 14.5" overall.

Durable, portable, and easy to operate, these handy Tru-Weight Sports Scales are used on camping, hunting and fishing excursions. Due to their accuracy they can also be used around the home, shop, and office. The tattle-tale indicator holds at maximum weight. All Tru-Weight Sports Scale utilize stainless steel for critical components which maintains the scales accuracy over the life of the product.

### **Alforjas or Decker Hooks** ( Item# 552-1 )

Set of 4 cast bronze Decker hooks. Can be used on our Phillips Formfitter Pack Saddle.



### **Cavalry Feed Bag** ( Item# 817-1 )

Calvary-style feed bag made of vinyl mesh. The mesh makes it so that fine particles filter out instead of being sucked up the horse's nostrils. This style allows the horse to throw its head without losing its feed.



### **Traditional Feed Bag** ( Item# 816-1 )

Traditional-style feed bag made of vinyl mesh. The mesh makes it so that fine particles filter out instead of being sucked up the horse's nostrils. Canvas on bottom.

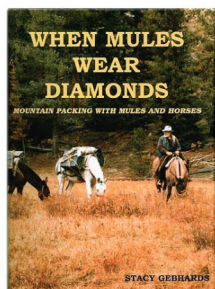


### **Canvas Feed Bag** ( Item# 815-1 )

Traditional style made of #2-0 canvas with leather bottom. This style and look have been around 100 years for a good reason.



# Packing Books

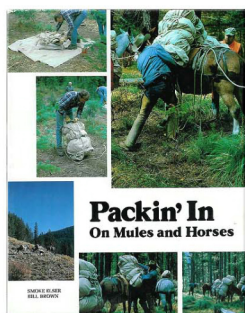
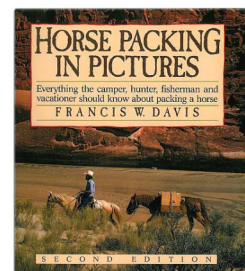


## **When Mules Wear Diamonds,** by Stacy Gebhards ( Item# newitem )

Over 70 knots, hitches, splices and pulley systems are described in 200 step-by-step illustrations. Learn how to make your own pack equipment. Train and handle pack stock safely on the trail and in camp. The author, with 43 years of packing experience in the northern Rockies, shows how to pack game animals, mantied cargo, boxes, panniers, tools, lumber, gravel and much more, using different pack saddles.

## **Horse Packing in Pictures,** by Francis W. Davis ( Item# 626-1 )

Everything the camper, hunter, fisherman and vacationer should know about packing a horse. Great Illustrations & Instructions. **BESTSELLER!**

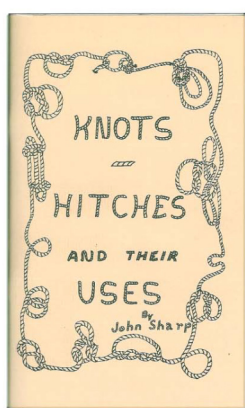
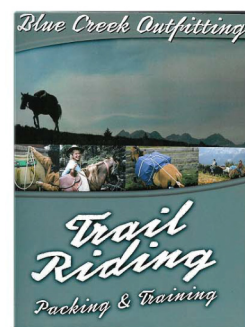


## **Packin' In on Mules and Horses,** by Smoke Elser and Bill Brown ( Item# 617-1 )

For those who yearn to pack in the wilderness country of the West, either on their own mules and horses or those of a professional packer, here is a book that takes the mystery out of back country packstring travel.

## **Trail Riding Packing & Training,** Blue Creek Outfitting ( Item# 227759552 )

- More than 400 How To photos!
- Hundreds of tips, techniques and facts!
- Tested and true, innovative and some never before in print!



## **Knots, Hitches, and their Uses,** by John Sharp ( Item# 608-1 )

Bestseller! Knots & Hitches are as old as time, but as useful now as in years gone by. This book is meant to give you a better understanding of how to tie and use most of the working knots and hitches.

12



[outfitterspackstation@yahoo.com](mailto:outfitterspackstation@yahoo.com)

1-800-657-2644

[www.outfitterspackstation.com](http://www.outfitterspackstation.com)



## Tack



### Mule Halter ( Item# 935 )

This utility halter is made for performance. Unless you get more mules, you won't need to re-order for years. The noseband is lined with real sheepskin; the cheek and crown pieces are lined with a heavy duty polypropylene for reinforcement. The snap on the crown piece is put on backwards, so the mule/horse can't open it if they rub their heads.

### Leather Halter ( Item# opshalter )

Heavy duty horse or mule leather halter made to last.



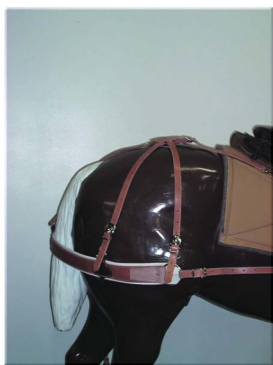
### Riding Cinch ( Item# 1709 )

Riding Cinch, Roper Style. Made out of 100% Mohair.



### Breast Collar ( Item # 906 ) Y-Breast Collar ( Item# 905 )

We make the breast collars out of 10 -12 oz. Harness Leather and have different colors available. The Breast Collar comes standard with nickel plated hardware, which can be exchanged for solid brass or stainless steel hardware (for an additional cost). The lining is a soft chap leather and won't rub on the animal. Custom inquiries are welcome.



### Four Spider Riding Breeching ( Item# fospribr )

This heavy duty Riding Breeching is made out of a 10-12 oz oiled harness leather. The straps are 3/4" wide and have roller buckles with buckle covers, which prevents tail hair from getting caught in the buckles. The breeching is fully lined with soft chaps leather and won't chafe your horse.





## Single Picket Hobble ( Item# 926 )

Durable harness rolled leather, lined. These hobbles include a heavy-duty square and a large D ring to attach your straps.



## Buckless Hobbles with Chain ( Item# hedulibuho )

These hobbles are made of strong russet harness leather and are lined with soft leather to ensure comfort for the horse. Hobbles come with a nickel-plated chain. The chain has a swivel to avoid tangles.



## Buckless Hobble w/o Chain ( Item# hobble-new )

We designed a new style of a buckless hobble. Instead of the heavy chain, we used 2 solid pieces of a 10 -12 oz. oiled harness leather, reinforced it with a heavy duty polypropylene webbing and lined it with soft chap leather. The outer harness leather is 1 inch wide and the lining measures 2 inches. There are 2 D-rings in the center, which gives you the option to attach a single rear hobble and to tie a lead rope to the other D-ring. The hobbles are light weight, but very strong and durable. The overall standard length (closed) is 17 inches, each leg opening measures 13 inches. Upon request, we can customize the size.



## Crupper with Strap ( Item# 917 )

High quality crupper filled with flax seed for your horse's comfort. The strap is made out of a tough 12 oz harness leather, 1" wide x 30" long. The hardware is nickel.

## Horn Crupper

The Horn Crupper has a 1" wide x 50" long leather strap, made out of heavy duty harness leather. The strap goes under the saddle and up around the saddle horn. It pulls the front of the saddle and not the back.



## Western Crupper

This is our own style of a crupper. It has 2 straps with "D" rings to be mounted to the flank cinch ring on your saddle. You can leave the straps and "D" rings on your saddle, which makes it easy to take the crupper on and off.





## Crupper ( Item# 916 )

Crupper piece only, filled with flax seed for your horse's comfort. It comes with nickel buckles.



## Leather Horn Bag

Our Leather Horn Bag comes as a single or a double pouch. It is made out of 8 – 10 oz. oiled skirting leather. It is big enough to fit a pair of binoculars or any other small items you may need for a day ride.

( Item# misc )



( Item# 804-3 )



## Leather Saddle Bag ( Item# 930-1 )

This heavy duty saddle bag is made out of 8 - 10 oz. oiled skirting leather. The bags measure 10W x 9H x 3.5 gusset.

## Canvas Saddle Bag ( Item# 1004-1 )

Traditional, Canvas Saddle Bag. Made of #6 Duck Canvas, with 4" gusset. Web reinforced. Grommets for tie down. Plastic Buckles. Comes in 2 sizes: Large: 10.5"L x 13"H Small: 9"L x 10"H



## Cantle Bag with Saddle Cover ( item# 803-1 )

This is a must for the person riding in bad weather. It's a regular cantle bag with the pullout cover for your saddle to keep rain and snow from ruining your leather.

[outfitterspackstation@yahoo.com](mailto:outfitterspackstation@yahoo.com)



1-800-657-2644

[www.outfitterspackstation.com](http://www.outfitterspackstation.com)





## Weekender Saddle Bag ( Item# 804-2 )

This is a very durable saddle bag, made out of a heavy duty cordura material. We use one solid piece, which starts on one side of the saddle bag, goes all the way around and back up to the other side of the saddle bag. In addition, we reinforce the saddle bag with 2 x 2" heavy duty polypropylene nylon webbing straps, which provides support and stability. Each bag has a zipper lid and a flap with 2 x 1" plastic snaps. On the front of each bag are 2 small compartments with a Velcro closure. The cantle bag on the large weekender is big enough to fit a sleeping bag and/or tent.



Measurements are:

1. Large Weekender: Bag 16"L x 8.5"D x 14"H; Cantle Bag 27"L x 21"D x 6.5"H
2. Small Weekender: Bag 13"L x 6.5"D x 13"H; Cantle Bag 17"L x 14"D x 5.5"H



## Gun & Bow Scabbards

### Leather Rifle Scabbard ( Item# 932-1 )

All leather scabbards are custom made in our shop. The picture shows a lined leather scabbard. We gladly take custom orders. Simply send us a pattern with measurements and a description of your desired design & color. Please plan on a 10 - 14 day lead time for this item.



### Cordura Rifle Scabbard ( Item# 809-1 )

Available in these colors: Brown and Orange.

### Cordura Bow Scabbard ( Item# 810-1 )



[outfitterspackstation@yahoo.com](mailto:outfitterspackstation@yahoo.com)



1-800-657-2644

[www.outfitterspackstation.com](http://www.outfitterspackstation.com)



## Riding Saddle Pad ( Item# 228028609 )

Brown Canvas 30" x 30" Pad with wool/felt lining.

This pad has 3 layers of the wool/felt lining and is 1" thick.

## Saw Covers

### Single Handle Dandy Saws ( Item# 438 )

The Dandy Saw was specifically engineered to cut wood and bone. The blade is made from high grade Swedish band saw steel which is used in the logging industry. The Baltic Birch handle is treated to withstand the most severe weather and still maintain its strength. The Dandy Saw has a lifetime warranty. Sizes 12", 18" & 28"



### Double Handle Dandy Saw ( Item# 440 )

Same item as the Single Handed Dandy Saws; measures 36".

## Leather Covers



All of our Leather Covers are made out of 12 oz. oiled skirting leather, which will protect your tools from the elements. Custom orders are welcome.

### Double Blade Axe Cover ( Item# 482 )



### Axe Cover ( Item# 479 )



### Leather Shovel Cover ( Item# leshco )

[outfitterspackstation@yahoo.com](mailto:outfitterspackstation@yahoo.com)

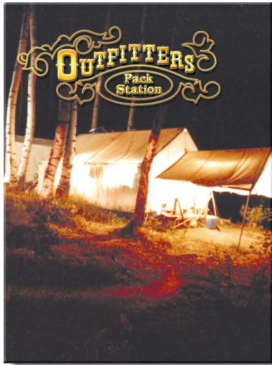


1-800-657-2644

[www.outfitterspackstation.com](http://www.outfitterspackstation.com)



# Camping Equipment



## Wall Tents ( All Wall Tents are custom order only )

8x10x4 Wall Tent

Item# 1500

8x10x5 Wall Tent

Item# 1501

10x12x4 Wall Tent

Item# 10wate1

10x12x5 Wall Tent

Item# 1504

12x14x4 Wall Tent

Item# 1506

12x14x5 Wall Tent

Item# 1508

14x16x4 Wall Tent

Item# 1510

14x16x5 Wall Tent

Item# 1512

16x20x5 Wall Tent

Item# 707

Insect Screen with Zipper

Item# 1514

Fiberglass Stove Pipe Ring

Item# 1515

Screen Window

Item# 1601

Vertical Zipper Door

Item# 1516

Ridge Pole Sleeve

Item# riposl

Tent Bag - 12 ounce canvas

Item# 1517

Sod Cloth

Item# 1519



## Tent Angles ( Item# 1600-1 )

The Wall Tent Angles have a 120 degree angle. They will fit a 1" electrical conduit. The Tent Angles are welded and zinc plated, not galvanized. They fit most standard canvas wall tents. Each screw has a heavy duty ring you can hang items off of. Every Wall Tent will use 6 3-Way Tent Angles; 3 for each end. We recommend to use the 4-Way Tent Angles every 4 - 5 ft to strengthen against inclement weather like wind and snow. The tent size would be 10 - 12 ft. with a total of 12 Tent Angles.



## Tent Sleeves ( Item# 1533 )

Tent sleeves are especially handy if you are packing into the back country and don't want to pack the standard 5' poles.



## Tent & Canvas Treatment ( Item# 1532 )

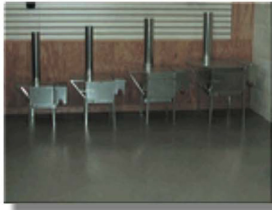
Water proofing coating may be applied with 4quarts of water for every 175-200 square feet. Apply with roller brush or sprayer. Can also repair holes in canvas.

18



[outfitterspackstation@yahoo.com](mailto:outfitterspackstation@yahoo.com)

[www.outfitterspackstation.com](http://www.outfitterspackstation.com)



## Riley Tent Stoves

Riley tent stoves are constructed of 18 gauge galvanized steel at all stress and wear areas and 20 gauge galvanized steel on top. It has a double bottom and double walls. This high quality lightweight stove has a 3 Year Guarantee! Riley tent stoves have been used by packers for many years and have gained high respect for their durability, longevity, and flexibility. All Riley Tent Stove models are lightweight, have an airtight design, and have the capability to store all its accessories inside the firebox. (NOTE: The Little Amigo firebox will not fit the 3 gallon water tank. The Riley Stove is used and approved by the U.S. Forest Service.



### Riley's Little Amigo Tent Stove ( Item# 2005 )

The Little Amigo Tent Stove is our most compact model. It measures 11x10x18 inches and is 12 lbs. This tent stove holds heat for 1 to 2 hours and will heat a 10x12 tent. It requires a 4 inch stove pipe and jack.



### Riley's Side Kick Tent Stove ( Item# 2004 )

The Side Kick Tent Stove is a very packable stove with large stove convenience. This tent stove measures 13x10x22 inches and weighs only 18 lbs. The Riley Side Kick will hold its heat for 2 to 3 hours and will heat a 12x14 tent. This stove requires 4 inch stove pipe.



### Riley's Colt Tent Stove ( Item# 2003 )

The Colt Tent Stove by Riley Stoves is a very packable stove with large stove convenience. This tent stove measures 13x13x22 and weighs 22 lbs. The Colt Tent Stove has a burn time of 4 to 6 hours and will heat a 12x14 tent. This stove requires 5 inch stove pipe.



### Riley's Wrangler Tent Stove ( Item# 2001 )

The Wrangler Tent Stove is the most popular Riley Stove. This tent stove measures 16x13x26 and weighs in at 26 lbs. The Wrangler Tent Stove has the burning time of 6 to 8 hours and can heat a wall tent up to 14x18 feet. It requires a 5 inch stove pipe and stove ring.





## Tent Pantry ( Item# 453 )

This Pantry is completely collapsible, adjustable and packable. It is made out of heavy duty #4 canvas and has a zipper door. By making the shelves out of hard board, they are both stable and durable while still being completely adjustable.  
Size: 36" high x 12" deep x 17" wide; 2 adjustable shelves, hard board on top and bottom.



## Roll-A-Chair ( Item# 310 )

This is a very handy chair. With it you have instant sitting comfort-all you do is open the legs and swing up the back-rest. It folds into a very compact bundle 26x4x4 with a weight capacity of 250 lbs. You can use it as a stool and as a chair. Includes an adjustable shoulder strap.

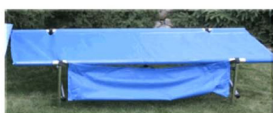
## Roll-A-Stool ( Item# 303 )

This handy stool also folds into a compact bundle held in place by a nylon strap.



## Roll-A-Table ( Item# 301 )

Compact, light-weight and portable. This 32 inch square x 28 inch tall table rolls down to a 32 inch long x 5.5 inch diameter pouch.



## Roll-A-Cot ( Item# 300 )

Features a breathable mesh top and strong aluminum frame. with a capacity of 250 pounds.

Sizes:

Standard - 74x28x15

Extra Wide -74x32x15

Extra Wide & Long - 84x32x15



## Sleeping Bag Cover ( Item# 1000 )

Fits over your sleeping bag. Made of maritime duck canvas, so it is waterproof. It features four-inch gussets on the sides and ends to give full use of the sleeping bag. An easy-to-open heavy-duty zipper runs down the side. The top flap folds over the top of the sleeping bag for extra shelter and end ties allow you to roll it all up securely.  
Measures 39x84.

20



[outfitterspackstation@yahoo.com](mailto:outfitterspackstation@yahoo.com)

1-800-657-2644

[www.outfitterspackstation.com](http://www.outfitterspackstation.com)

## Dutch Oven



### Aluminum Dutch Ovens ( Item# dohaduov )

These burly dutch oven cookers are made of lightweight, rust-proof aluminum. So they heat up nice and even, but are just 1/3 the weight of traditional cast iron. No messy seasoning is required, and the Hard Anodized version is the next best thing to non-stick.

The 10-inch model nests inside the 12-inch dutch oven for compact storage. You won't find a more efficient, effective dutch oven.



### Cast Iron Dutch Ovens

We carry the standard/classic Cast Iron Dutch Oven in a 10", 12" and 14". These Dutch Ovens prepare delicious meals with the hearty flavor only achieved with cast iron cookware. The raised lip around the lid is excellent for cooking with charcoal briquettes or wood. Seasoned and ready to cook. Each Classic is a modern heirloom cast with Camp Chef's dedication to quality.



### Dutch Oven Grip Lid Lifter ( Item# 148 )

This is the best dutch oven lid lifter on the market! A lid lifter is a must for any dutch oven cooking. It moves your hands away from the heat, and with the gripped handles, it gives you complete control of the lid. It lifts from underneath so there is less chance of dropping. Never again will you get ash in your food or drop your hot coals while checking on dinner! Comes in two sizes.

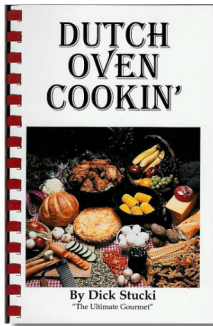


### Dandy Dutch Oven Stand ( Item# 250 )

This 3-legged dutch oven stand is as functional as it is durable. It can hold up to 200 lbs, while still being able to fold up to less than an inch thick. It is made of steel and powder coated for a long lasting finish. This stand is ideal for packing, or to use any time you are dutch oven cooking.

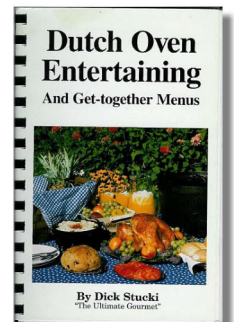


## Dutch Oven Cook Books



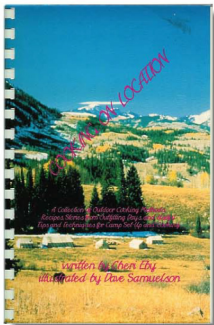
### Dutch Oven Cookin', by Dick Stucki ( Item# 604 )

Whether you are just starting out with Dutch ovens or are a seasoned outdoor chef, you will find some great recipes in this book. It gives detailed instructions about the care and use of Dutch ovens, how to season a Dutch oven and even how to control the heat. Dick Stucki is recognized as America's leading authority on Dutch oven cooking.



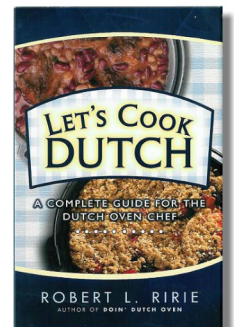
### Dutch Oven Entertaining, by Dick Stucki ( Item# 603 )

"Enjoy the warmth and hospitality of entertaining family and friends using these festive yet fun and easy get-together menus for holidays, birthdays and other special occasions throughout the year."



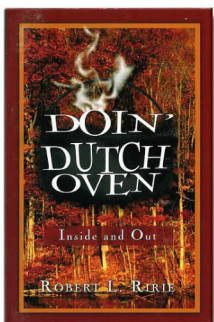
### Cooking on Location, by Cheri Eby ( Item# 227767702 )

A Collection of Outdoor Cooking Methods, Recipes, Stories from Outfitting Days and useful Tips and Techniques for Camp Set-Up and Cooking.



### Let's Cook Dutch, by Robert L. Ririe ( Item# 607 )

This is one of the most complete books in its field. For the beginner, there are valueable general instructions concerning the preparation, usage and maintenance of Dutch ovens. Eleven chapters are filled with mouth-watering recipes, including sauces, meat dishes, quick meals, desserts, bread and much more.



### Doin' Dutch Oven, by Robert L. Ririe ( Item# 227768020 )

Enjoy delicious Dutch oven dining inside your home or by the campfire. This book is an excellent collection of more than a hundred delectable recipes and menus for Dutch oven cooking. Learn how to cook outdoor favorites such as tri-tip steaks, venison and deer jerky as well as valuable ways to cook quick Dutch oven meals for breakfast, lunch and dinner.

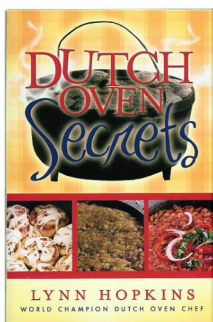
22



[outfitterspackstation@yahoo.com](mailto:outfitterspackstation@yahoo.com)

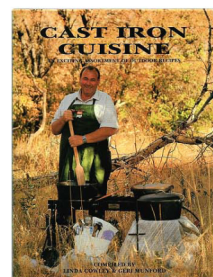
1-800-657-2644

[www.outfitterspackstation.com](http://www.outfitterspackstation.com)



## Dutch Oven Secrets, by Lynn Hopkins ( Item# 227768095 )

Here's a valuable book for those who are new to the art of Dutch oven cooking. Written by a veteran of several World Championship Dutch Oven Cook-offs, this guide has it all!



## Cast Iron Cuisine, by Linda Cowley & Geri Munford

( Item# 605 )

An exciting assortment of Outdoor Recipes like:

Danish Aebleskiver, Dutch Oven Sweet Bread, Baked Ham with Pineapple, Diced Potatoes, Orange Carrots, Cherry Chocolate Delight and much more.

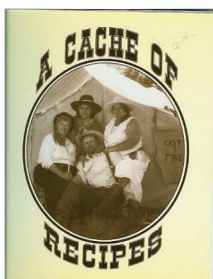
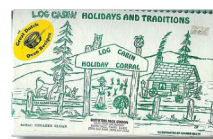


## Log Cabin Dutch Oven, by Colleen Sloan ( Item# 629 )

Black Pot Cooking at it's best. Done in your oven, outside or camping – nothing beats the taste of Dutch Oven Cooking. One-pot meals, breads, desserts, camping section and a little gourmet.

## Log Cabin Holidays and Traditions, by Colleen Sloan

In this Dutch Oven cook book the author tried to gather old recipes, games, traditions & meanings for you to share with your family and friends. Colleen tried to touch each holiday and include some cooking ideas for birthdays and anniversaries as well.



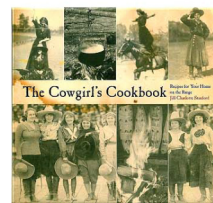
## A Cache of Recipes ( Item# 227768336 )

Several authors came together and collected Dutch oven recipes. This book has a great variety of traditional and unusual recipes.

## The Cowgirl's Cookbook, by Jill Charlotte Stanford

( Item# 227768566 )

Take a dash of western myths, a sprinkle of vintage photographs and a dollop of tall tales, simmer with a delicious selection of western recipes and voila – The Cowgirl's Cookbook. From Cow Punchers Punch to June's Ranch Beans, Cackleberries on Toast to Cowgirl Crude Salsa, Fit for a Queen Green Chili Soup to Texas Two-Step Blackberry Dumplings, these hearty fixins will feed a city girl's fantasy as well as a country boy's belly.



23



[outfitterspackstation@yahoo.com](mailto:outfitterspackstation@yahoo.com)

[www.outfitterspackstation.com](http://www.outfitterspackstation.com)



## Miscellaneous



### Rope by the Foot: 3/8, 1/2 and 5/8 Available (Item# 3)

This is a soft Poly/Dac rope which doesn't freeze in cold weather.

### Little Magic Fire Starter (Item# limafist)

These Firestarter are a "must have" item! Starting a fire even in wet weather is no longer a chore. Made out of paraffin wax, paper and cotton, these Firestarters store easily. When needed, simply peel off one corner and light it; it will burn for 7 - 10 minutes. 50 Firestarters per bag.



### Knot Eliminator with or w/o Swiffel

We carry the Knot Eliminator with and without a swivel. Use the swiveling knot eliminator if you tie a rope without a snap to it to avoid that the rope will not become twisted or unraveled while tied.



### Tree Saver

Outfitters Pack Station designed its own Tree Saver. It is made out of heavy duty 2" polypropylene webbing and consists of 2 pieces, 1 long 12 ft strap and a connector piece with 2 x 2" rings on one side & 1 x 2" ring on the other side. Loop the long strap around a tree and then through the 2 connector rings. The highline rope goes through the single 2" ring. Pull on the strap to tighten the high line. Please visit our website and watch the instructional video about the Tree Saver. Sold as singles, please order 2 if you need a set.

## Hardware

We sell a big selection of nickel steel, nickel plated, solid brass and stainless steel hardware. Please call us about availability and prices.



### Skidmore's Leather Cream 17 oz. ( Item# 939 )

Skidmore's Leather Cream is an all purpose leather care product which cleans, conditions, and protects all types of leather. Regular use will build a degree of waterproofing on the leather. Dry, curled, cracked leather will come back to life and be protected from the harsh effects of the environment.

## Leather Mate ( Item# 941 )

Leather Mate™ is a lanolin - based, carnauba wax, sealing product which can be used on any shiny leather and even some exotic skins, such as snake, alligator and lizard. It does not contain harsh products like silicone, alcohol or lye and therefore will not crack the leather. In fact Leather Mate™ increases the suppleness of the leather which helps prevent cracking and fading.



### Knot Playing Cards ( Item# 628 )

Learn to tie knots while playing a game of cards.





## Fencing & Tools



### Portable Corral Kit with 1 1/2" Poly tape

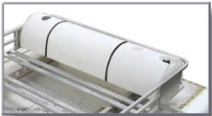
50 foot x 50 foot Portable Corral, is made with 200 feet of Safe-Fence 1 1/2" webbing on the R-18 rewind reel with 8 - 2 piece treaded posts, the HP- B2D Trail charger and tie downs all in a packable 24" a carrying bag. Weight 18 lbs.

### Plammers Pliers ( Item# plammerspliers )

This is a great fencing tool. Also can be used as a quick fix if you lose a shoe. Made out of heavy duty steel. Made in the USA. Please specify the size when you order the pliers.



## Barn & Trailer



### Half Moon Water Caddy 48 GAL ( Item# HMHR-48 )

This water caddy is designed to put on the top rack of your horse trailer. It comes with a 8ft. hose & shut off valve to allow filling from the ground; 4 zip ties and 2 straps. Translucent plastic allows to see water level in the tank. Size: 63 1/2"L x 18"W x 12"H Weight: 28 lbs.



### Slant Load/Upright Water Caddy 39 GAL ( Item# SL-39 )

This water caddy fits into your horse trailer and holds up to 39 gallons. It features a vent in the fill cap on the top of the caddy. It comes standard with two shut-off valves (one for the hose & one for filling a bucket); a strap/hardware kit. Size: 14" corner sides x 14.5 front side x 72" high. Weight 29 lbs.

### EZ-Grip Mat Mover ( Item# EZ-GRIP )

Makes moving rubber mats a breeze. Self adjusts to fit all sizes of mats. Auto locks & holds tight.



### Trailer/RV Entry Step 14" ( Item# MS-14 )

This trailer/RV step has a 14" height and a wide base design for easy & stable entry. Color: ash grey. Size: 21"L x 18 3/4"W x 14"H

## Farrier Items



### Maintenance Farrier Stand ( Item# MFS )

This Farrier Stand consists of 1 standard adjustable base with 2 magnets, 1 rubber cradle & 1 rubber post. Easily perform maintenance/farrier duties with more ease and less weight on your back. Heavy duty diamond plate finish metal. 17" min - 25 1/2" max. height.

### Maintenance Farrier Caddy ( Item# MFC-S )

Blue frame with black trays. Large top tray to hold box of nails and other items. Lower tray has 3 compartments to keep tools separated. Side loop holds hammer or other handle items. 18 3/4" high x 15 3/4" wide; weight 11 lbs.



### Maintenance Farrier Tool Pouch ( Item# MTP )

This pouch is a very handy item to have, it keeps all your tools together. It only comes in the blue color. The pouch has a 8 pocket design. One pouch has a velcro lid to hold loose items. Tools are not included.

## Apparel

### Rain Slicker ( Item# 1234 )

Rain Slicker by Wyoming Trader Co. Waterproof; made out of light weight material, hand painted with Acrylic Latex; Cotton Muslin lining; red collar with storm closure; two rows of buttons Colors: Orange, black Size: Small - XXXL



### Rancher Wool Vest ( Item# VB )

Wool Vest by Wyoming Trader 22 oz. pure Australian Wool; Naturally water resistant; satin lining; big pockets Color: Black Size: Small - XXXL

[outfitterspackstation@yahoo.com](mailto:outfitterspackstation@yahoo.com)



1-800-657-2644

[www.outfitterspackstation.com](http://www.outfitterspackstation.com)



# Terms & Conditions

**Please inspect all goods carefully upon receipt.  
Returns will only be accepted within 30 working days of our shipment,  
and only if the merchandise has not been resold or used.**

## **Terms:**

We accept VISA and MC. Payment is due at time of shipment. Custom orders require a 50% deposit at time of ordering.

## **Special Orders:**

A non-refundable deposit is required on all special and custom orders. The 50% deposit is required at time of order. Non-stock items and custom made orders can not be cancelled or returned.

## **Returns and Exchanges:**

Return of merchandise is not permitted without prior approval within 30 days of shipment. Returns for full credit or replacement are accepted for defective or miss-shipped merchandise only. All returns must be shipped pre-paid. A 20% restocking fee will apply on all general merchandise. We are unable to guarantee that exchange merchandise will be available at the time your order is processed; in these instances your original form of payment will be refunded.

## **Back Orders:**

In the event that an item is out of stock, it will be ordered and shipped when available unless otherwise stated.

## **Freight Policy:**

All shipments will be shipped either UPS Ground or USPS Priority Mail. All shipping charges are pending on weight of the order. Expedited shipping is available upon request and at an additional cost. If an e-mail address is provided, we will e-mail a tracking number for your reference.

## **Loss and Damage Claims:**

Claims for lost shipments or for damages must be reported immediately. Claims for shortages in any shipment will be honored after 7 working days from date of shipment. Please inspect your order immediately upon arrival.

## **Prices:**

Due to changeable markets and circumstances beyond control all published prices are subject to change without notice. To be guaranteed accurate prices, please inquire at time of order.

[outfitterspackstation@yahoo.com](mailto:outfitterspackstation@yahoo.com)



1-800-657-2644

[www.outfitterspackstation.com](http://www.outfitterspackstation.com)



# OUTFITTERS

Pack  
Station

