

# Every Day is New

Jennifer Ferren

Swing / shuffle feel ♩ = 120

CM<sup>7</sup> Intro FM<sup>7</sup> CM<sup>7</sup> FM<sup>7</sup> C/G Gsus

5 CM<sup>7</sup> Verses 1 & 2 F<sup>6</sup>

Ev - er - y day, \_\_\_\_\_ is a new be - gin - ning, \_\_\_\_\_ A  
Ev - er - y night, \_\_\_\_\_ when I go to sleep, \_\_\_\_\_ My

7 CM<sup>7</sup> F<sup>6</sup> Gm<sup>7</sup> C<sup>7</sup>/G

chance to e - raise un - hap - py end - ings. \_\_\_\_\_  
un - cons-cious mind counts the bles-sings I \_\_\_\_\_ reap. \_\_\_\_\_

9 B<sup>b</sup>M<sup>7</sup> F<sup>2</sup>/A F/G CM<sup>7</sup>

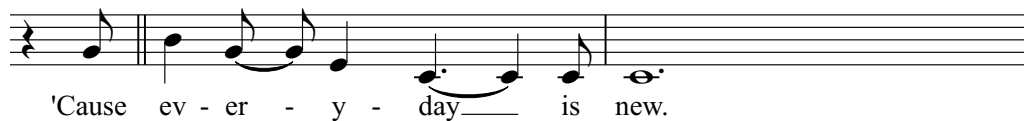
When I wake I can make a thous-and dreams come true.  
When I sleep my thoughts seem to work them-selves on out.

# Every Day is New

3

## Chorus

G<sup>7</sup> CM<sup>7</sup> BM<sup>7</sup> B<sup>b</sup>M<sup>7</sup>



15 CM<sup>7</sup>

Gm<sup>7</sup>

B<sup>b</sup>/C

C<sup>7</sup>

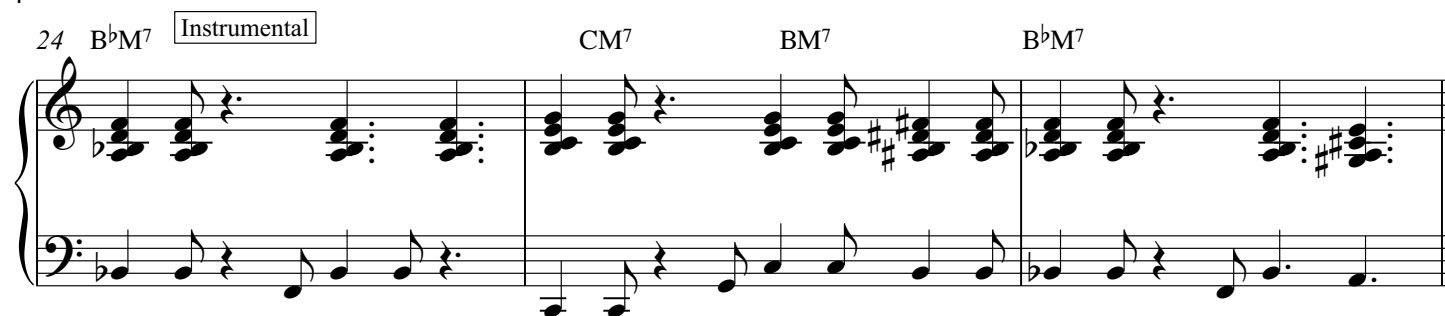
Fm<sup>7</sup>

F<sup>6</sup>

In - fin - ite paths to choose. The choic-es I make, and the

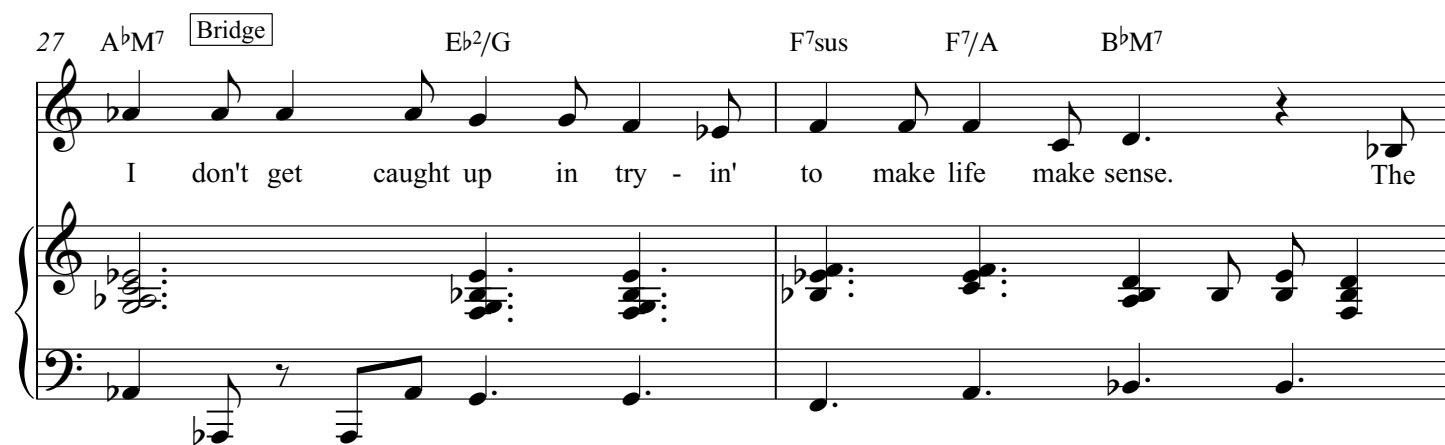
## Every Day is New

24 B $\flat$ M<sup>7</sup> Instrumental CM<sup>7</sup> BM<sup>7</sup> B $\flat$ M<sup>7</sup>



27 A $\flat$ M<sup>7</sup> Bridge Eb<sup>2</sup>/G F<sup>7</sup>sus F<sup>7</sup>/A B $\flat$ M<sup>7</sup>

I don't get caught up in try - in' to make life make sense. The



# Every Day is New

1

Swing / shuffle feel ♩ = 120

Jennifer Ferren

CM<sup>7</sup> **Intro** FM<sup>7</sup> CM<sup>7</sup> FM<sup>7</sup> C/G Gsus

5 CM<sup>7</sup> **Verses 1 & 2** F<sup>6</sup> CM<sup>7</sup>

Ev-er - y day, is a new be - gin - ning, A chance to e - rase un-  
Ev-er - y night, when I go to sleep, My un-cons-cious mind counts the

8 F<sup>6</sup> Gm<sup>7</sup> C<sup>7</sup>/G B<sup>b</sup>M<sup>7</sup> F<sup>2</sup>/A F/G CM<sup>7</sup>

hap - py end - ings, When I wake I can make a thous-and dreams come true.  
bles-sings I reap, When I sleep my thoughts seem to work them-selves on out.

**Chorus** G<sup>7</sup> CM<sup>7</sup> B<sup>M</sup><sup>7</sup>

'Cause ev - er - y - day is

14 B<sup>b</sup>M<sup>7</sup> CM<sup>7</sup> Gm<sup>7</sup> B<sup>b</sup>/C C<sup>7</sup>

new. In - fin - ite paths to choose. The

17 FM<sup>7</sup> F<sup>6</sup>

choic - es I make,

B<sup>b</sup>M<sup>7</sup>

I don't get caught up in try - in'

to make life make sense.

# Every Day is New

Swing / shuffle feel ♩ = 120

Jennifer Ferren

Capo 3rd fret Intro

$\frac{12}{8}$  AM<sup>7</sup> | DM<sup>7</sup> | AM<sup>7</sup> | DM<sup>7</sup> A/E Esus |

Verses 1 & 2  
||:AM<sup>7</sup> | D<sup>6</sup> |  
Ev - er - y day, \_\_\_\_\_ is a new be - gin - ning, \_\_\_\_\_ A  
Ev - er - y night, \_\_\_\_\_ when I go to sleep, \_\_\_\_\_ My

AM<sup>7</sup> | D<sup>6</sup> Em<sup>7</sup> A<sup>7</sup>/E |  
chance to e - raise un - hap - py end - ings.\_\_\_\_  
un - cons - cious mind counts the bles - sings I \_\_\_\_\_ reap.\_\_\_\_

GM<sup>7</sup> D<sup>2</sup>/F# | D/E AM<sup>7</sup> |  
When I wake I can make a thous - and dreams come true.  
When I sleep my thoughts seem to work them - selves on out.

Chorus

E<sup>7</sup> ||  
'Cause

AM<sup>7</sup> A<sup>b</sup>M<sup>7</sup> | GM<sup>7</sup> | AM<sup>7</sup> | Em<sup>7</sup> G/A A<sup>7</sup> |  
ev - er - y - day \_\_\_\_\_ is new. In - fin - ite paths to choose. \_\_\_\_\_ The

DM<sup>7</sup> D<sup>6</sup>  
choic - es I make,

## Instrumental

| GM<sup>7</sup> | AM<sup>7</sup> A<sup>b</sup>M<sup>7</sup> | GM<sup>7</sup> ||

## Bridge

FM<sup>7</sup> C<sup>2</sup>/E | D<sup>7</sup><sub>sus</sub> D<sup>7</sup>/F<sup>#</sup> GM<sup>7</sup>  
 I don't get caught up in try - in' to make life make sense.

# Every Day is New

By Jennifer Ferren

## VERSE 1

Every day, is a new beginning,  
A chance to erase unhappy endings.  
When I wake I can make a thousand dreams come true.  
I can use my faith in God in ev'rything I do.

## CHORUS

'Cause everyday is new.  
Infinite paths to choose.  
The choices I make, and the chances I take are based in truth.  
And every day is new.

## VERSE 2

Every night, when I go to sleep,  
My unconscious mind counts the blessings I reap.  
When I sleep my thoughts seem to work themselves on out.  
When I rise to greet the day my mind is free of doubt.

## CHORUS

## BRIDGE

I don't get caught up in tryin' to make life make sense.  
The price that it would cost me would be too high an expense,  
So I just pray,  
And keep the faith.

## CHORUS

## CODA

Yes it's true,  
Every day is new.