

THE GRACE OF GOD

Serena Joaqim
Arr. by A. Alvarez
& David Ezell

Intro **Slowly and rhythmically** ♩ = 63

Bbm Gbmaj7 A♭(sus4) D♭(add2) A♭11 Verse 1

If one man

3 D♭ Bbm G♭6

— Can prove you can, — You too can a-chieve

6 A♭(sus4) A♭ D♭

What you be-lieve. Plant one seed — In your field of dreams, —

Chorus 1

11 $A\flat/C$ $A\flat$

Ev-'ry-thing_ your heart has hoped for, Ev-'ry dream you've e - ver yearned for,

13 $B\flat m$ $G\flat^6$ $A\flat^7(sus4)$ $D\flat$ $A\flat/C$

All of this and more can be yours.____ For the grace__ of God is good.

Verse 2



Don't give



The Grace of God

19 $D\flat$ $B\flat m^{11}$

in, And don't back down. Don't give up

This musical system covers measures 19 and 20. The vocal line is in a key with four flats (B-flat major or D-flat minor) and features a melodic line with eighth and quarter notes. The piano accompaniment consists of a right hand with chords and moving lines, and a left hand with a steady eighth-note bass line. Chord symbols $D\flat$ and $B\flat m^{11}$ are placed above the staff.

21 $G\flat^6$ $A\flat^7(sus4)$

on the seed_ Of faith and love_ you've sown, Ev - en though_

This musical system covers measures 21 and 22. The vocal line continues the melody with a half note and a quarter note. The piano accompaniment features a right hand with sustained chords and a left hand with a moving eighth-note line. Chord symbols $G\flat^6$ and $A\flat^7(sus4)$ are placed above the staff.

The Grace of God

5

27 Chorus 2 Ab/C Ab

Just hold on_ and by_ God's grace You'll be tak - en to_ a place Where

29 Bbm Gbmaj7 Ab(sus4) Db

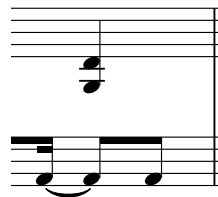
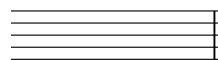
ev-en dreams be - lieve,_ And you'll see_ That the grace_

31 Ab/C

_ of God is good.

The Grace of God

Instrumental



35 $D\flat(\text{add}2)$ $B\flat m^9$

37 $G\flat \text{maj}^9$ $B\flat m$ $G\flat \text{maj}^9$ $B\flat m$ $A\flat^{13}$ $A\flat$ Verse 3

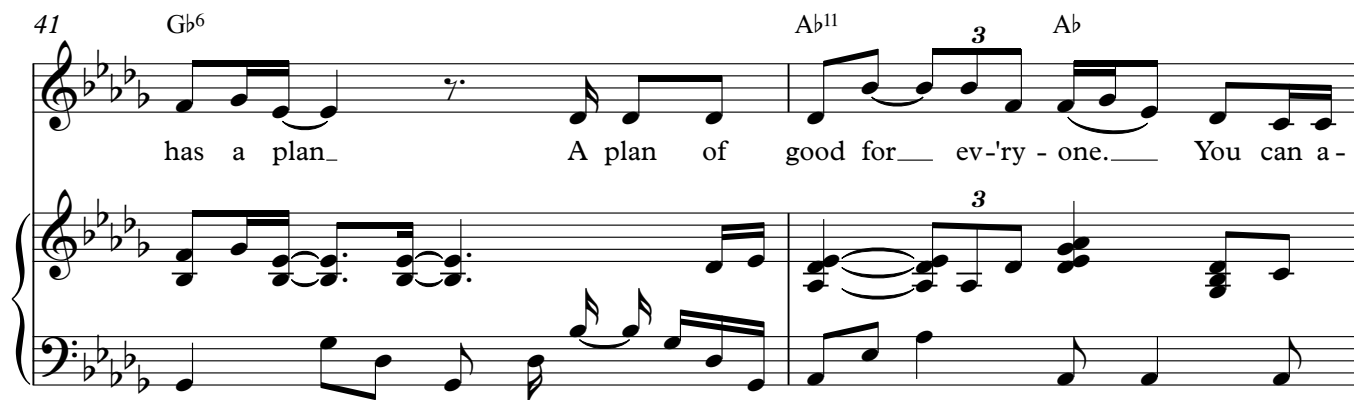
If one man

39 $D\flat$ $B\flat m$

Can prove you can God

41 $G\flat^6$ $A\flat^{11}$ 3 $A\flat$

has a plan_ A plan of good for_ ev-'ry - one._ You can a -



43 $D\flat$

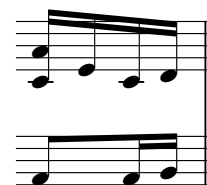
chieve,



Chorus 3

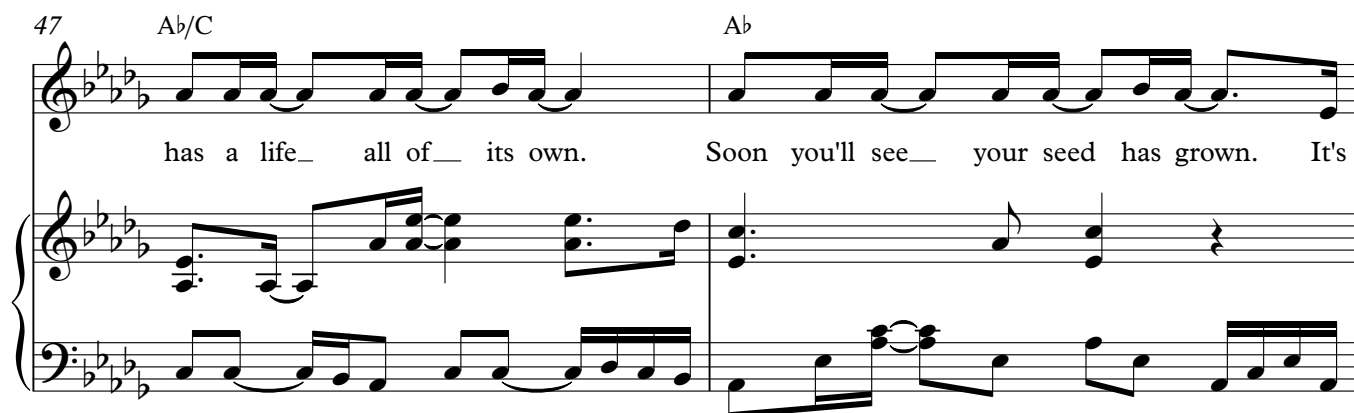


Your dream



47 $A\flat/C$ $A\flat$

has a life_ all of_ its own. Soon you'll see_ your seed has grown. It's



The Grace of God

8

49 $B\flat m$ $G\flat maj7$ $A\flat7(sus4)$ $A\flat(sus4)$ $A\flat$

big - ger ev - 'ry day... God has made a way, For the grace.

51 $A\flat/C$

— of God is good.

54 $A\flat7(sus4)$ $A\flat$ **Chorus 4** $A\flat/C$

good. Don't give in and don't back down. Don't for-

56 $A\flat$ $B\flat m$ $E\flat m$ $D\flat/F$ $G\flat$ $A\flat(sus4)$ $A\flat$

get the seed you've sown. Can't you see it's grow-ing big-ger ev - ' ry day? Just hold

59 $A\flat/C$

on and by God's grace

THE GRACE OF GOD

Serena Joaquin

Arr. by A. Alvarez

& David Ezell

Intro Slowly and rhythmically ♩ = 63

Bbm Gbmaj7 Ab(sus4) Db(add2) Ab11 Verse 1 Db

If one man Can prove you can,

4 Bbm Gb6 Ab(sus4) Ab Db

— You too can a-chieve What you be-lieve. Plant one seed In your field of dreams,

Chorus 1

Ab/C

Ev-'ry-thing your heart has hoped for,

12 Ab Bbm Gb6 Ab7(sus4) Db

Ev-'ry dream you've e - ver yearned for, All of this and more can be yours. For the grace

15 Ab/C

— of God is good.

Ab Verse 2 Db Bbm11 Gb6

Don't give in, And don't back down. Don't give up on the seed Of

22 Ab7(sus4)

faith and love you've sown,

Chorus 2

Ab/C

Just hold on and by God's grace

The Grace of God

2

28 $A\flat$ $B\flat m$ $G\flat maj7$ $A\flat(sus4)$ $D\flat$

You'll be tak-en to__ a place Where ev-en dreams be-lieve, And you'll see__ That the grace

Instrumental

31 $A\flat/C$

__ of God is good

$A\flat$

35

38 Verse 3 $D\flat$ $B\flat m$ $G\flat6$

If one man__ Can prove you__ can__ God has a plan A plan of

42 $A\flat^{11}$ 3 $A\flat$ $D\flat$

good for__ ev-'ry-one.__ You can a - chieve,

Chorus 3 $A\flat/C$

Your dream has a life__ all of__ its own.

48 $A\flat$ $B\flat m$ $G\flat maj7$ $A\flat7(sus4)$

Soon you'll see__ your seed__ has grown. It's big - ger ev - 'ry day.__

50 $A\flat(sus4)$ $A\flat$ $A\flat/C$

God has made a way, For the grace__ of God is good.

$A\flat$ Chorus 4 $A\flat/C$

Don't give in and don't back down. Don't for -

The Grace of God

3

56 A^b B^bm E^bm D^b/F G^b $A^b(sus4)$ A^b



get the seed.you've sown.____ Can't you see it's grow-ing big-ger ev-' ry day? Just hold

59 A^b/C



on and by____ God's grace

THE GRACE OF GOD

Slowly and rhythmically ♩ = 63

Serena Joaquim
Arr. by A. Alvarez
& David Ezell

Intro 1st fret

$\frac{4}{4}$ Am Fmaj7 G(sus4) | C(add2) G¹¹ || C |
If one man— Can prove you can,

Am | F⁶ | G(sus4) G |
— You too can a - chieve What you be - lieve. Plant one seed

C |
— In your field of dreams, -

Chorus 1

G/B | G |
Ev-'ry-thing your heart has hoped for, Ev-'ry dream you've e - ver yearned for,

Am F⁶ G⁷(sus4) | C |
All of this— and more can be yours.— For the grace

G/B
— of God is good.

Verse 2

Don't give

The Grace of God

C | Am¹¹ |
 in, And don't back down. Don't give up

F⁶ | G^{7(sus4)}
 on the seed. Of faith and love you've sown,

Chorus 2

G/B | G |
 Just hold on__ and by__ God's grace You'll be tak - en to__ a place Where

Am Fmaj⁷ G(sus⁴) | C |
 ev - en dreams be - lieve, And you'll see__ That the grace

G/B
 __ of God. is good.

Instrumental

||

C(add2) | Am⁹ | Fmaj⁹ Am Fmaj⁹ Am |

G¹³ G | Verse 3 |
 If one man__ ||

C | Am | F⁶ |
 ____ Can prove you__ can__ God has a plan A plan of

G¹¹ G C
 good for___ ev - 'ry - one.____ You can a - chieve,

Chorus 3

||

Your dream

G/B | G |
 has a life__ all of__ its own. Soon you'll see__ your seed has grown. It's

Am Fmaj7 G^{7(sus4)} | G^(sus4) G |
 big - ger ev - 'ry day._ God has made a way, For the grace

G/B
 __ of God_ is good.

Chorus 4

||

Don't give

G/B | G Am |
 in and don't back down. Don't for - get the seed you've sown.____

Dm C/E F | G^(sus4) G |
 Can't you see it's grow - ing big - ger ev - ' ry day?__ Just hold

G/B
 on and by__ God's grace

THE GRACE OF GOD

By Serena Joaquim

VERSE 1

If one man
Can prove you can,
You too can achieve
What you believe.
Plant one seed
In your field of dreams,
And just believe
You can achieve.

CHORUS 1

Ev'rything your heart has hoped for,
Ev'ry dream you've ever yearned for,
All of this and more can be yours.
For the grace of God is good.
Life unfolds just as it should
For your highest good.

VERSE 2

Don't give in,
And don't back down.
Don't give up on the seed
Of faith and love you've sown,
Even though
Doors may close
And you feel alone.
You feel like nobody knows.

CHORUS 2

Just hold on and by God's grace
You'll be taken to a place
Where even dreams believe,
And you'll see
That the grace of God is good.
Life unfolds just as it should
For your highest good.

INSTRUMENTAL

VERSE 3

If one man
Can prove you can
God has a plan
A plan of good for ev'ryone.
You can achieve.
What you believe.
Focus on your dream,
Focus on your dream.

CHORUS 3

Your dream has a life all of its own.
Soon you'll see your seed has grown.
It's bigger ev'ry day.
God has made a way,
For the grace of God is good.
Life unfolds just as it should
For your highest good.

CHORUS 4

Don't give in and don't back down.
Don't forget the seed you've sown.
Can't you see it's growing
bigger ev'ry day?
Just hold on and by God's grace
You'll be taken to a place
Where even dreams,
Yes even dreams believe.

CODA CHORUS

For the grace of God is good.
Life unfolds just as it should
For your highest,
For your highest good
Just hold on and by God's grace
You'll be taken to a place
Where even dreams,
Yes even dreams believe,
For the grace of God is good.
Life unfolds just as it should
For your highest,
For your highest good.
Just hold on and by God's grace
You'll be taken to a place
Where even dreams,
Yes even dreams,
Yes even dreams, believe.