

# YOU ARE NOT ALONE

Jana Stanfield  
arr. David Ezell

Moderate Pop Beat ♩ = 96

The first system of the piano introduction consists of two measures. The right hand plays a sequence of chords: F major, C major, F major, C major, F major, C major. The left hand plays a bass line with a dotted quarter note followed by an eighth note, then a quarter note, and finally a half note.

3 Eb Cm

The second system features a vocal line and piano accompaniment. The vocal line starts with a repeat sign and contains the lyrics: "You think you're the on - ly one Caught un - der clouds that block the sun. Live and learn 'cuz here's the deal: Ev - 'ry - bod - y feels the things we feel,". The piano accompaniment continues with the same chord sequence as the first system.

5 Fm Bb7

The third system continues the vocal and piano accompaniment. The vocal line contains the lyrics: "Life's not eas - y that's the breaks. Ev - 'ry - one of us still makes mis - takes. Love and fear and grate - ful - ness, An - gry words you can't for - get." The piano accompaniment continues with the same chord sequence.

# You Are Not Alone

4

13 Eb Cm Cm(sus4)

lone. Look a - round and you'll see

16 Cm Fm(add2) Fm

Some-one like me Look-ing your di-

19 Abmaj7 Fm7/Bb Eb

rec - tion. We all need con - nec - tion

# You Are Not Alone

Cm Ab



We all need a lit-tle



32 Bb Eb Fm Gm



help now and then. All it takes is the cour-age To o - pen our hearts and

You Are Not Alone

6

38 F Dm

lone. Look a - round and you'll see

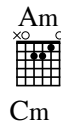
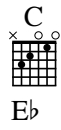
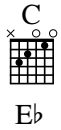
41 Gm

Some-one like me Look-ing your di -

# YOU ARE NOT ALONE

Moderate Pop Beat ♩ = 96

Capo fret 3



Jana Stanfield  
arr. David Ezell



You think you're the on - ly one Caught un - der clouds that block the sun.  
Live and learn 'cuz here's the deal: Ev - 'ry - bod - y feels the things we feel,



5 Fm



Bb7

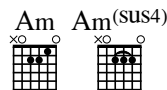


Life's not eas - y that's the breaks.  
Love and fear and grate - ful - ness,

Ev - 'ry - one of us still makes mis - takes.  
An - gry words you can't for - get.



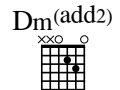
13 Eb



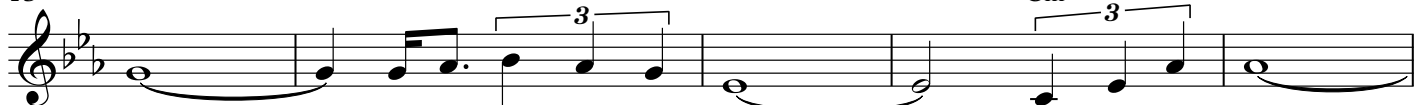
Cm Cm(sus4)



Cm



Fm(add2)



lone. Look a-round and you'll see Some-one like me

## You Are Not Alone

18

Dm Fm Fmaj7 A $\flat$ maj7 Dm $^7$ /G Fm $^7$ /B $\flat$  C Eb

Look-ing your di - rec - tion. We all need con-nec - tion

31

Am Cm F A $\flat$  G B $\flat$  C Eb Dm Fm

We all need a lit - tle help now and then. All it takes is the cour-age To

34

Em Gm F A $\flat$  Dm $^7$ /G Fm $^7$ /B $\flat$  A $^7$ (sus4) C $^7$ (sus4)

o - pen our hearts and reach out our hands. You are not a -

You Are Not Alone

38

D  
F  
Bm  
Dm  
Em  
Gm

lone. Look a-round and you'll see Some-one like me

43

Gmaj7  
Bbmaj7  
Em7/A  
Gm7/C  
D

Look-ing your di - rec - tion. We all need con - nec - tion.

# **YOU ARE NOT ALONE**

Jana Stanfield

## VERSE

You think you're the only one  
Caught under clouds  
    that block the sun.  
Life's not easy that's the breaks.  
Ev'ryone of us still makes mistakes.  
Ev'rybody walks through heartache.  
Ev'rybody walks through pain,  
But still we search the sky above  
For rainbows after rain.

## CHORUS

You are not alone.  
Look around and you'll see  
Someone like me  
Looking your direction.  
We all need connection  
As we stumble toward our dreams.  
You are not alone  
Look around and you'll see. \*\*\*

## VERSE

Live and learn 'cuz here's the deal:  
Ev'rybody feels the things we feel,  
Love and fear and gratefulness,  
Angry words you can't forget.  
Ev'rybody goes through bad times,  
Emotions black as night,  
But still we know the dawn is waiting  
On the other side.

## CHORUS

## BRIDGE

We all need a little help  
    now and then.  
All it takes is the courage  
To open our hearts and  
    reach out our hands.

## CHORUS

\*\*\*this line could be "Join together  
with me"