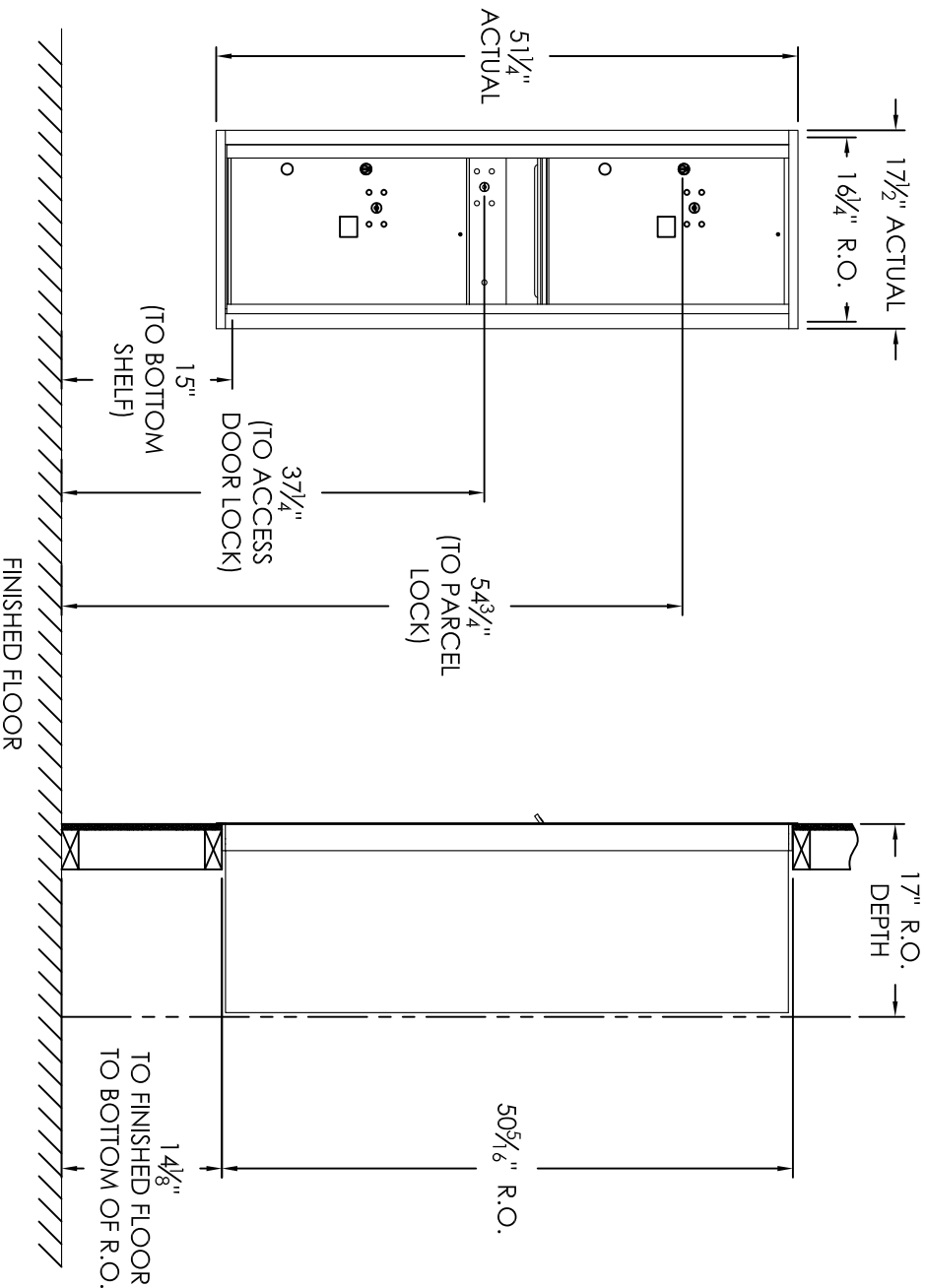


# Versatile™ 4C Mailbox, 4C14S-2P



COMPARTMENT CHART

DESCRIPTION	COMPARTMENT	COMPARTMENT SIZE	QTY.
OUTGOING MAIL	OM2	6'-1 1/2" H x 12" W x 15" D	1
PARCEL	PL6	20'-1 1/2" H x 12" W x 15" D	2

PRODUCT SERIES: VERSATILE™ 4C FRONT LOAD MAILBOX

MODEL	4C14S-2P	REV
SCALE	NONE	LAST REV DATE
DRAWING NUMBER	4C14S-2PCS	DRAWN BY
		AFD

**Notes:**

- This module meets the USPS STD-4C requirements for installation defined below when the mailbox is installed per the dimensions provided on this drawing.
  - At least one customer compartment shall be positioned less than 48" above finished floor (AFF).
  - No parcel locker (interior bottom shelf) shall be positioned less than 15" AFF.
  - No patron (tenant) lock shall be positioned more than 67" AFF.
  - No customer compartment (interior bottom shelf) shall be positioned less than 28" AFF.
  - The USPS Arrow lock shall be positioned 36"-48" AFF.
- This 4C mailbox can also be used for private applications.
- The rough opening width for multi-unit 4C installations = (the sum of all actual unit widths) - 1 1/8".