



## *Premier Mail Delivery Solutions*

The Private Collection

*Designed with Style  
Engineered for Strength  
Built to Endure*

Distributed by: Custom Home Accessories, Inc.  
11300 Trade Center Drive, Suite A • Rancho Cordova, CA 95742  
1-800-265-0041 • Fax 916-635-0228 • [www.customhomex.com](http://www.customhomex.com)



## INDEX

3	PRIVATE COLLECTION
4-5	MASTER DOOR
6	CENTRAL DELIVERY FLAP CONTROL
7	DELIVERY FLAP
8-9	TRI-POINT SERIES
10-11	BI-POINT SERIES
12-13	UNI-POINT SERIES
14	COMPARISON CHART
14	SUGGESTED APPLICATIONS
14	FINISHES
14	WARRANTY INFORMATION
15	CUSTOMER DOOR IDENTIFICATION
15-16	MAILBOX CABINET DIMENSIONS
17-19	CUSTOMER DOOR SIZES



## The Private Collection offers three points of secure delivery access.

Alone, each point of delivery access provides enormous benefits. Together, they offer endless flexibility.  
The new Private Collection Mailboxes - *Convenience secured.*

- I Secure *full* access to all compartments via the Master Door
- II Secure *limited* access to all compartments via the Central Delivery Flap Control \*
- III Secure *limited* access to tenant compartments via the Delivery Flap



## MASTER DOOR

**Secure *full* access to all compartments via the Master Door**

The master door is a true blend of form and function. The bold frame holds the master door lock as well as the convenient door pull. The frame is made of 1-1/8" wide aluminum extrusion and each corner is reinforced with a 1" square solid aluminum angle bar. To assure longevity and resistance to sagging, the master door has been tested to 150,000 cycles, the equivalent of over 100 years of heavy use. The style, strength, and durability of our master door is truly unparalleled in the industry.



master door handle and lock

## Engineered for efficiency

The quality and thickness of our master door allows the master lock to be securely mounted to the frame itself. Unlike other manufacturers' designs, our master lock does not take up any compartment, leaving all compartments for customer use.



door frame and angle bar

## Strength + Durability = Reliability

The same high quality keeps our master door from twisting or warping, and inhibits break-ins. These mailboxes have been designed to provide years of trouble-free, secure service.



shown with master door open

UPS, FedEx, USPS overnight letters, the day's mail, and a medium sized package will all easily fit into the large compartments. Available in a variety of customer door sizes, our mailboxes are designed to meet all mail delivery needs.



The central delivery flap control is an ergonomically designed locking mechanism that has undergone a 150,000 cycle fatigue test to safeguard against failure. What makes this mechanism so unique is its arrangement of gears and rollers that ensures strong yet smooth operation.



## CENTRAL DELIVERY FLAP CONTROL

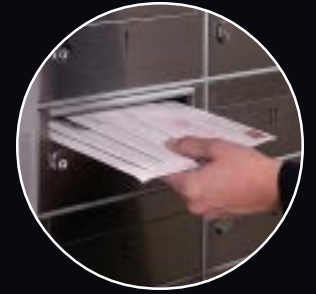
**Secure *limited* access to all compartments via the Central Delivery Flap Control**

With a twist of the wrist our central delivery flap system allows for easy access to all individual compartment flaps. This unique and patented system is our exclusive! This system allows for delivery of mail, even large envelopes, without allowing access to mail that may already be in a tenant's mailbox - added convenience with added security.





latch



mail delivery

**Unlock the latch for limited individual compartment access**



delivery flap



## DELIVERY FLAP

**Secure *limited* access to tenant compartments via the Delivery Flap**

If a tenant wishes to receive letters from outside the normal delivery channels, an individual compartment's delivery flap may be unlocked with a simple flip of a latch. The tenant no longer has to wait for mailroom personnel to deliver an urgent letter. The sender can deposit it through the delivery flap, leaving all mail already in the box totally secure. Our mailboxes deliver more than just the mail, they also provide access to convenience, flexibility, and peace of mind.



# TRI-POINT SERIES

## FRONT LOADING

The Tri-Point Series offers delivery options not found in any other mailbox. From the heavy-duty master door to the patented central delivery flap control and the tenant-controlled delivery flap, safe and secure premier delivery solutions are yours for the choosing!

- I Secure *full* access to all compartments via the Master Door
- II Secure *limited* access to all compartments via the Central Delivery Flap Control
- III Secure *limited* access to tenant compartments via the Delivery Flap





Rear view with master door open



front view



Rear view with management door open

## REAR LOADING

The Tri-Point rear loading series utilizes the same strong and tested master door that is featured in the front loading series, but instead of a central delivery flap control, there is a central management door at the rear. Simply unlock the central management door to gain access to all tenant compartments via individual slots. Like the front loading series, individual tenant delivery flap access is through the front of the mailbox.

- I Secure *full* access to all compartments via the Master Door
- II Secure *limited* access to all compartments via the Central Management Door
- III Secure *limited* access to tenant compartments via the Delivery Flap



# BI-POINT SERIES

## FRONT LOADING

The Bi-Point series allows tenants the flexibility to accept or reject mail from outside the traditional delivery methods. For example, professors may want to have their students 'turn in' assignments to their mailboxes. Similarly, urgent or confidential mail can be delivered directly into an executive's compartment. All these and more can be achieved while maintaining complete security of any mail that may already be in the mailbox.

- I Secure *full* access to all compartments via the Master Door
- II Secure *limited* access to tenant compartments via the Delivery Flap



Rear view



## REAR LOADING

The Bi-Point series rear loading mailbox features a master door in the rear. This is the same heavy duty door found in the front loading series that has been tested to 150,000 cycles. Like the front loading series, individual tenant delivery flaps are located on the front of the mailbox.

- I Secure *full* access to all compartments via the Master Door
- II Secure *limited* access to tenant compartments via the Delivery Flap



Rear view with master door open



# UNI-POINT SERIES

## FRONT LOADING

The Uni-Point series is our traditional mailbox with a contemporary look. The refined design makes a statement of elegance and quality in any mailroom.

- 1 Secure *full* access to all compartments via the Master Door



Rear view



Delivery is a joy with our mailboxes

## REAR LOADING

The rear loading Uni-Point series mailbox features a master door in the rear. Tested to 150,000 cycles, this mailbox not only looks great, it will last a lifetime.

- 1 Secure *full* access to all compartments via the Master Door



Front view

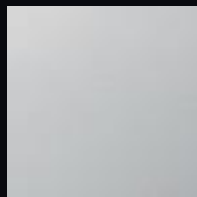
## COMPARISON

FEATURES	UNI-POINT		BI-POINT		TRI-POINT	
	Front Loading	Rear Loading	Front Loading	Rear Loading	Front Loading	Rear Loading
Master Door	●	●	●	●	●	●
Delivery Flap			●	●	●	●
Central Delivery Flap Control					●	
Central Management Door						●
Customer Door Sizes						
4-1/4" (w) x 4-1/4" (h)	●	●				
4-1/4" (w) x 5-7/8" (h)	●	●				
5-7/8" (w) x 4-1/4" (h)			●	●		●
10-1/2" (w) x 4-1/4" (h)	●	●	●	●	●	●
10-1/2" (w) x 5-7/8" (h)	●	●	●	●	●	●
Customer Door Finishes						
Anodized Aluminum	●	●	●	●	●	●
Anodized Bronze	●	●	●	●	●	●
Anodized Gold	●	●	●	●	●	●
Stainless Steel	●	●	●	●	●	●
Customer Door Identification						
Engraved	●	●	●	●	●	●
Recessed Decal	●	●	●	●	●	●

## SUGGESTED APPLICATIONS

USERS	UNI-POINT	BI-POINT	TRI-POINT
<b>Universities</b>			
Professors receiving papers securely from students		●	●
Faculty staff distributing internal mail within the department			●
Students delivering mail to other students (ex. Valentine's Day cards)		●	●
Mailroom delivering to all	●	●	●
<b>Commercial Buildings</b>			
Executives receiving confidential or urgent mail		●	●
Building management delivering leaflets to all tenants			●
Department staff distributing internal mail			●
Staff delivering mail to other staff		●	●
Mailroom delivering to all	●	●	●

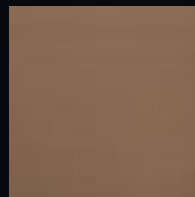
## FINISHES



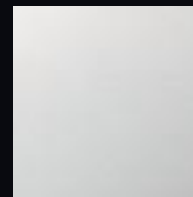
Anodized Aluminum



Anodized Gold



Anodized Bronze



Stainless Steel

## WARRANTY

We manufacture our mailboxes to the highest standards in the industry. Each mailbox comes with a five year guarantee.

# UNI-POINT SERIES

## MAILBOX CABINET DIMENSIONS

(w) x (h) x 16-1/2" (d)

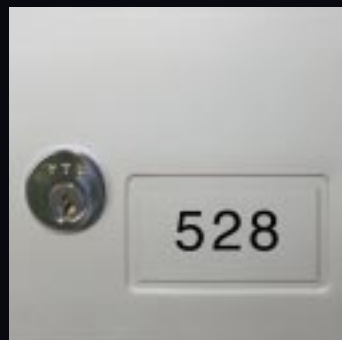


cabinets are 16-1/2" in depth

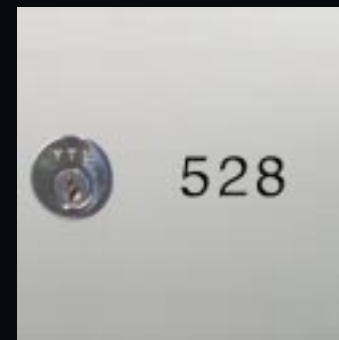
FRONT LOADING		UNI-POINT SERIES			
	3 columns	4 columns	5 columns	6 columns	
<b>4-1/4" (w) x 4-1/4" (h) Customer Door</b>					
4 rows	16-1/8" x 22-7/8"	n/a	n/a	n/a	
5 rows	16-1/8" x 27-1/8"	n/a	n/a	n/a	
6 rows	16-1/8" x 31-1/2"	n/a	n/a	n/a	
7 rows	16-1/8" x 35-7/8"	20-1/2" x 35-7/8"	24-3/4" x 35-7/8"	29-1/8" x 35-7/8"	
8 rows	16-1/8" x 40-1/8"	20-1/2" x 40-1/8"	24-3/4" x 40-1/8"	29-1/8" x 40-1/8"	
9 rows	16-1/8" x 44-1/2"	20-1/2" x 44-1/2"	24-3/4" x 44-1/2"	29-1/8" x 44-1/2"	
10 rows	16-1/8" x 48-7/8"	20-1/2" x 48-7/8"	24-3/4" x 48-7/8"	29-1/8" x 48-7/8"	
11 rows	16-1/8" x 53-1/8"	20-1/2" x 53-1/8"	24-3/4" x 53-1/8"	29-1/8" x 53-1/8"	
<b>4-1/4" (w) x 5-7/8" (h) Customer Door</b>					
4 rows	16-1/8" x 29-1/8"	20-1/2" x 29-1/8"	24-3/4" x 29-1/8"	n/a	
5 rows	16-1/8" x 35"	20-1/2" x 35"	24-3/4" x 35"	n/a	
6 rows	16-1/8" x 41"	20-1/2" x 41"	24-3/4" x 41"	n/a	
7 rows	16-1/8" x 46-7/8"	20-1/2" x 46-7/8"	24-3/4" x 46-7/8"	n/a	
8 rows	16-1/8" x 52-3/4"	20-1/2" x 52-3/4"	24-3/4" x 52-3/4"	n/a	
2 columns		3 columns	-	-	
<b>10-1/2" (w) x 4-1/4" (h) Customer Door</b>					
4 rows	24-3/8" x 22-7/8"	n/a	n/a	n/a	
5 rows	24-3/8" x 27-1/8"	n/a	n/a	n/a	
6 rows	24-3/8" x 31-1/2"	n/a	n/a	n/a	
7 rows	24-3/8" x 35-7/8"	35" x 35-7/8"	n/a	n/a	
8 rows	24-3/8" x 40-1/8"	35" x 40-1/8"	n/a	n/a	
9 rows	24-3/8" x 44-1/2"	35" x 44-1/2"	n/a	n/a	
10 rows	24-3/8" x 48-7/8"	35" x 48-7/8"	n/a	n/a	
11 rows	24-3/8" x 53-1/8"	35" x 53-1/8"	n/a	n/a	
<b>10-1/2" (w) x 5-7/8" (h) Customer Door</b>					
4 rows	24-3/8" x 29-1/8"	35" x 29-1/8"	n/a	n/a	
5 rows	24-3/8" x 35"	35" x 35"	n/a	n/a	
6 rows	24-3/8" x 41"	35" x 41"	n/a	n/a	
7 rows	24-3/8" x 46-7/8"	35" x 46-7/8"	n/a	n/a	
8 rows	24-3/8" x 52-3/4"	35" x 52-3/4"	n/a	n/a	

REAR LOADING		UNI-POINT SERIES			
	3 columns	4 columns	5 columns	6 columns	
<b>4-1/4" (w) x 4-1/4" (h) Customer Door</b>					
4 rows	16-1/8" x 21-5/8"	n/a	n/a	n/a	
5 rows	16-1/8" x 25-7/8"	n/a	n/a	n/a	
6 rows	16-1/8" x 30-1/4"	n/a	n/a	n/a	
7 rows	16-1/8" x 34-5/8"	20-1/2" x 34-5/8"	24-3/4" x 34-5/8"	29-1/8" x 34-5/8"	
8 rows	16-1/8" x 38-7/8"	20-1/2" x 38-7/8"	24-3/4" x 38-7/8"	29-1/8" x 38-7/8"	
9 rows	16-1/8" x 43-1/4"	20-1/2" x 43-1/4"	24-3/4" x 43-1/4"	29-1/8" x 43-1/4"	
10 rows	16-1/8" x 47-1/2"	20-1/2" x 47-1/2"	24-3/4" x 47-1/2"	29-1/8" x 47-1/2"	
11 rows	16-1/8" x 51-7/8"	20-1/2" x 51-7/8"	24-3/4" x 51-7/8"	29-1/8" x 51-7/8"	
<b>4-1/4" (w) x 5-7/8" (h) Customer Door</b>					
4 rows	16-1/8" x 27-7/8"	20-1/2" x 27-7/8"	24-3/4" x 27-7/8"	n/a	
5 rows	16-1/8" x 33-3/4"	20-1/2" x 33-3/4"	24-3/4" x 33-3/4"	n/a	
6 rows	16-1/8" x 39-5/8"	20-1/2" x 39-5/8"	24-3/4" x 39-5/8"	n/a	
7 rows	16-1/8" x 45-5/8"	20-1/2" x 45-5/8"	24-3/4" x 45-5/8"	n/a	
8 rows	16-1/8" x 51-1/2"	20-1/2" x 51-1/2"	24-3/4" x 51-1/2"	n/a	
2 columns		3 columns	-	-	
<b>10-1/2" (w) x 4-1/4" (h) Customer Door</b>					
4 rows	24-3/8" x 21-5/8"	n/a	n/a	n/a	
5 rows	24-3/8" x 25-7/8"	n/a	n/a	n/a	
6 rows	24-3/8" x 30-1/4"	n/a	n/a	n/a	
7 rows	24-3/8" x 34-5/8"	35" x 34-5/8"	n/a	n/a	
8 rows	24-3/8" x 38-7/8"	35" x 38-7/8"	n/a	n/a	
9 rows	24-3/8" x 43-1/4"	35" x 43-1/4"	n/a	n/a	
10 rows	24-3/8" x 47-1/2"	35" x 47-1/2"	n/a	n/a	
11 rows	24-3/8" x 51-7/8"	35" x 51-7/8"	n/a	n/a	
<b>10-1/2" (w) x 5-7/8" (h) Customer Door</b>					
4 rows	24-3/8" x 27-7/8"	35" x 27-7/8"	n/a	n/a	
5 rows	24-3/8" x 33-3/4"	35" x 33-3/4"	n/a	n/a	
6 rows	24-3/8" x 39-5/8"	35" x 39-5/8"	n/a	n/a	
7 rows	24-3/8" x 45-5/8"	35" x 45-5/8"	n/a	n/a	
8 rows	24-3/8" x 51-1/2"	35" x 51-1/2"	n/a	n/a	

## CUSTOMER DOOR IDENTIFICATION



Recessed decal in customer door

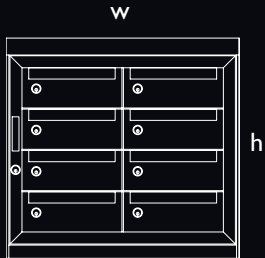


Engraved on customer door

# BI-POINT SERIES

## MAILBOX CABINET DIMENSIONS

(w) x (h) x 16-1/2" (d)



cabinets are 16-1/2" in depth

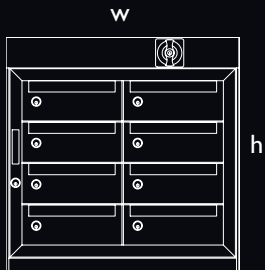
FRONT LOADING		BI-POINT SERIES			
		2 columns	3 columns	4 columns	5 columns
5-7/8" (w) x 4-1/4" (h) Customer Door					
4 rows	n/a	20-7/8" x 23-1/8"	n/a	n/a	n/a
5 rows	n/a	20-7/8" x 27-3/8"	n/a	n/a	n/a
6 rows	n/a	20-7/8" x 31-3/4"	n/a	n/a	n/a
7 rows	n/a	20-7/8" x 36-1/8"	26-3/4" x 36-1/8"	32-5/8" x 36-1/8"	
8 rows	n/a	20-7/8" x 40-3/8"	26-3/4" x 40-3/8"	32-5/8" x 40-3/8"	
9 rows	n/a	20-7/8" x 44-3/4"	26-3/4" x 44-3/4"	32-5/8" x 44-3/4"	
10 rows	n/a	20-7/8" x 49"	26-3/4" x 49"	32-5/8" x 49"	
11 rows	n/a	20-7/8" x 53-3/8"	26-3/4" x 53-3/8"	32-5/8" x 53-3/8"	
10-1/2" (w) x 4-1/4" (h) Customer Door					
4 rows	24-3/8" x 23-1/8"	n/a	n/a	n/a	
5 rows	24-3/8" x 27-3/8"	n/a	n/a	n/a	
6 rows	24-3/8" x 31-3/4"	n/a	n/a	n/a	
7 rows	24-3/8" x 36-1/8"	35" x 36-1/8"	n/a	n/a	
8 rows	24-3/8" x 40-3/8"	35" x 40-3/8"	n/a	n/a	
9 rows	24-3/8" x 44-3/4"	35" x 44-3/4"	n/a	n/a	
10 rows	24-3/8" x 49"	35" x 49"	n/a	n/a	
11 rows	24-3/8" x 53-3/8"	35" x 53-3/8"	n/a	n/a	
10-1/2" (w) x 5-7/8" (h) Customer Door					
4 rows	24-3/8" x 29-3/8"	35" x 29-3/8"	n/a	n/a	
5 rows	24-3/8" x 35-1/4"	35" x 35-1/4"	n/a	n/a	
6 rows	24-3/8" x 41-1/8"	35" x 41-1/8"	n/a	n/a	
7 rows	24-3/8" x 47-1/8"	35" x 47-1/8"	n/a	n/a	
8 rows	24-3/8" x 53"	35" x 53"	n/a	n/a	

REAR LOADING		BI-POINT SERIES			
		2 columns	3 columns	4 columns	5 columns
5-7/8" (w) x 4-1/4" (h) Customer Door					
4 rows	n/a	20-7/8" x 23-1/4"	n/a	n/a	n/a
5 rows	n/a	20-7/8" x 27-1/2"	n/a	n/a	n/a
6 rows	n/a	20-7/8" x 31-7/8"	n/a	n/a	n/a
7 rows	n/a	20-7/8" x 36-1/4"	26-3/4" x 36-1/4"	32-5/8" x 36-1/4"	
8 rows	n/a	20-7/8" x 40-1/2"	26-3/4" x 40-1/2"	32-5/8" x 40-1/2"	
9 rows	n/a	20-7/8" x 44-7/8"	26-3/4" x 44-7/8"	32-5/8" x 44-7/8"	
10 rows	n/a	20-7/8" x 49-1/4"	26-3/4" x 49-1/4"	32-5/8" x 49-1/4"	
11 rows	n/a	20-7/8" x 53-1/2"	26-3/4" x 53-1/2"	32-5/8" x 53-1/2"	
10-1/2" (w) x 4-1/4" (h) Customer Door					
4 rows	24-3/8" x 23-1/4"	n/a	n/a	n/a	
5 rows	24-3/8" x 27-1/2"	n/a	n/a	n/a	
6 rows	24-3/8" x 31-7/8"	n/a	n/a	n/a	
7 rows	24-3/8" x 36-1/4"	35" x 36-1/4"	n/a	n/a	
8 rows	24-3/8" x 40-1/2"	35" x 40-1/2"	n/a	n/a	
9 rows	24-3/8" x 44-7/8"	35" x 44-7/8"	n/a	n/a	
10 rows	24-3/8" x 49-1/4"	35" x 49-1/4"	n/a	n/a	
11 rows	24-3/8" x 53-1/2"	35" x 53-1/2"	n/a	n/a	
10-1/2" (w) x 5-7/8" (h) Customer Door					
4 rows	24-3/8" x 29-1/2"	35" x 29-1/2"	n/a	n/a	
5 rows	24-3/8" x 35-3/8"	35" x 35-3/8"	n/a	n/a	
6 rows	24-3/8" x 41-3/8"	35" x 41-3/8"	n/a	n/a	
7 rows	24-3/8" x 47-1/4"	35" x 47-1/4"	n/a	n/a	
8 rows	24-3/8" x 53-1/8"	35" x 53-1/8"	n/a	n/a	

# TRI-POINT SERIES

## MAILBOX CABINET DIMENSIONS

(w) x (h) x 16-1/2" (d)



cabinets are 16-1/2" in depth

FRONT LOADING		TRI-POINT SERIES			
		2 columns	3 columns	4 columns	5 columns
10-1/2" (w) x 4-1/4" (h) Customer Door					
4 rows	24-3/8" x 24-1/2"	n/a	n/a	n/a	n/a
5 rows	24-3/8" x 28-7/8"	n/a	n/a	n/a	n/a
6 rows	24-3/8" x 33-1/8"	n/a	n/a	n/a	n/a
7 rows	24-3/8" x 37-1/2"	35" x 37-1/2"	n/a	n/a	n/a
8 rows	24-3/8" x 41-3/4"	35" x 41-3/4"	n/a	n/a	n/a
9 rows	24-3/8" x 46-1/8"	35" x 46-1/8"	n/a	n/a	n/a
10 rows	24-3/8" x 50-1/2"	35" x 50-1/2"	n/a	n/a	n/a
11 rows	24-3/8" x 54-3/4"	35" x 54-3/4"	n/a	n/a	n/a
10-1/2" (w) x 5-7/8" (h) Customer Door					
4 rows	24-3/8" x 30-3/4"	35" x 30-3/4"	n/a	n/a	n/a
5 rows	24-3/8" x 36-3/4"	35" x 36-3/4"	n/a	n/a	n/a
6 rows	24-3/8" x 42-5/8"	35" x 42-5/8"	n/a	n/a	n/a
7 rows	24-3/8" x 48-1/2"	35" x 48-1/2"	n/a	n/a	n/a
8 rows	24-3/8" x 54-3/8"	35" x 54-3/8"	n/a	n/a	n/a

REAR LOADING		TRI-POINT SERIES			
		2 columns	3 columns	4 columns	5 columns
5-7/8" (w) x 4-1/4" (h) Customer Door					
4 rows	n/a	20-7/8" x 23-1/4"	n/a	n/a	n/a
5 rows	n/a	20-7/8" x 27-1/2"	n/a	n/a	n/a
6 rows	n/a	20-7/8" x 31-7/8"	n/a	n/a	n/a
7 rows	n/a	20-7/8" x 36-1/4"	26-3/4" x 36-1/4"	32-5/8" x 36-1/4"	
8 rows	n/a	20-7/8" x 40-1/2"	26-3/4" x 40-1/2"	32-5/8" x 40-1/2"	
9 rows	n/a	20-7/8" x 44-7/8"	26-3/4" x 44-7/8"	32-5/8" x 44-7/8"	
10 rows	n/a	20-7/8" x 49-1/4"	26-3/4" x 49-1/4"	32-5/8" x 49-1/4"	
11 rows	n/a	20-7/8" x 53-1/2"	26-3/4" x 53-1/2"	32-5/8" x 53-1/2"	
10-1/2" (w) x 4-1/4" (h) Customer Door					
4 rows	24-3/8" x 23-1/4"	n/a	n/a	n/a	n/a
5 rows	24-3/8" x 27-1/2"	n/a	n/a	n/a	n/a
6 rows	24-3/8" x 31-7/8"	n/a	n/a	n/a	n/a
7 rows	24-3/8" x 36-1/4"	35" x 36-1/4"	n/a	n/a	n/a
8 rows	24-3/8" x 40-1/2"	35" x 40-1/2"	n/a	n/a	n/a
9 rows	24-3/8" x 44-7/8"	35" x 44-7/8"	n/a	n/a	n/a
10 rows	24-3/8" x 49-1/4"	35" x 49-1/4"	n/a	n/a	n/a
11 rows	24-3/8" x 53-1/2"	35" x 53-1/2"	n/a	n/a	n/a
10-1/2" (w) x 5-7/8" (h) Customer Door					
4 rows	24-3/8" x 29-1/2"	35" x 29-1/2"	n/a	n/a	n/a
5 rows	24-3/8" x 35-3/8"	35" x 35-3/8"	n/a	n/a	n/a
6 rows	24-3/8" x 41-3/8"	35" x 41-3/8"	n/a	n/a	n/a
7 rows	24-3/8" x 47-1/4"	35" x 47-1/4"	n/a	n/a	n/a
8 rows	24-3/8" x 53-1/8"	35" x 53-1/8"	n/a	n/a	n/a



## CUSTOMER DOOR SIZES

Available in five sizes. Shown  
at actual size on pages 17-19.

- A. 4-1/4" (w) x 4-1/4" (h)
- B. 4-1/4" (w) x 5-7/8" (h)
- C. 5-7/8" (w) x 4-1/4" (h)
- D. 10-1/2" (w) x 4-1/4" (h)
- E. 10-1/2" (w) x 5-7/8" (h)



A. Actual size of 4-1/4" (w) x 4-1/4" (h) customer door



C. Actual size of 4-1/4" (w) x 5-7/8" (h) customer door  
(shown with delivery flap open)



D. Actual size of 10-1/2" (w) x 4-1/4" (h) customer door  
(shown with delivery flap open)



E. Actual size of 10-1/2" (w) x 5-7/8" (h) customer door



Distributed by: Custom Home Accessories, Inc.  
11300 Trade Center Drive, Suite A • Rancho Cordova, CA 95742  
1-800-265-0041 • Fax 916-635-0228 • [www.customhomex.com](http://www.customhomex.com)