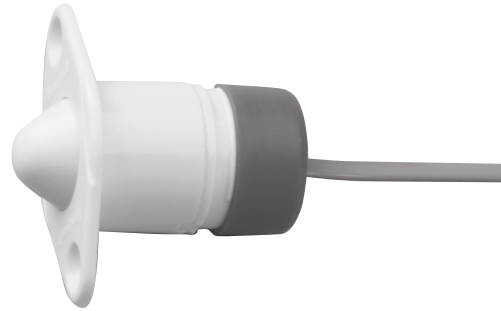


## 5800RPS

### WIRELESS RECESSED TRANSMITTER



Honeywell's 5800RPS Wireless Recessed Transmitter provides concealed protection for entry doors and is so small it virtually disappears once installed. With features including a clean, fast installation, battery life of up to 7 years\* and exceptional range, you'll want to use it on every job where aesthetics and discretion are critical.

## FEATURES

- Smallest wireless recessed transmitter on the market
- Perfect solution when aesthetics are a concern
- Up to 7-year battery life\*
- Replaceable lithium coin cell battery (CR1620 type)

*\*subject to use*

## SPECIFICATIONS

### • Product Dimensions

Dowel package: 0.75" diameter  
Additional info: Dowel Lid 0.85"  
diameter x 0.06" thick  
Wire antenna: 8" length x 0.125"  
diameter (24 gauge)  
flexible antenna  
Fits cavity depth: 0.33" depth

### • Power Source

Replaceable 3.0V lithium coin cell battery  
CR1620 (energizer or panasonic)

### • Transmit Frequency

345 MHz

### • Temperature Range

10° F to 120° F (-12° C to 49° C)

### • Operating Humidity

Up to 95% RH (max), non-condensing

### • Compatibility

Compatible with all 5800 Series wireless  
receivers and transceivers

### • Agency Listings

FCC  
ETL Listed; US and Canada  
(Tested to UL 634 and ULC C634 standards)  
IC

# 5800RPS

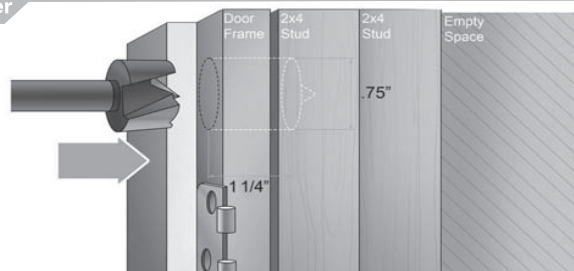
WIRELESS RECESSED TRANSMITTER

## INSTALLATION TIPS

Step  
**1**

### Measure and Drill for Plunger

Use a 3/4" drill bit into the door jamb to a 1 1/4" depth.

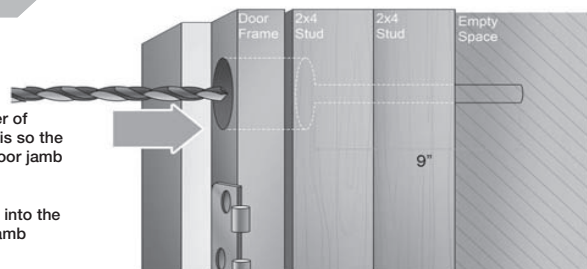


Step  
**2**

### Drill for Antenna

A 1/4" hole must be drilled in the center of the cavity through the door jamb. This is so the antenna can be inserted through the door jamb frame and the supporting studs.

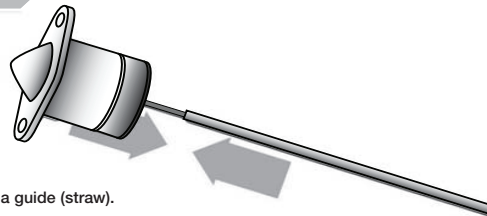
\*Note: The antenna can also be routed into the hollow area between the door jamb and framing.



Step  
**3**

### Slide on Straw

Slide the antenna into supplied antenna guide (straw).



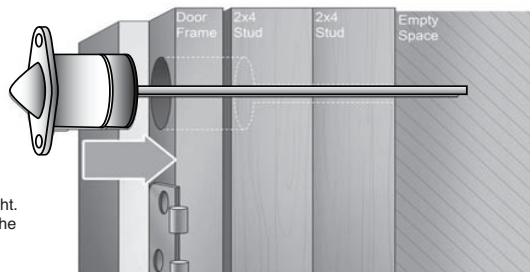
Step  
**4**

### Place and Set

Insert switch and antenna into the door jamb.

Secure framing with the screws provided.

It is important to always keep the antenna straight. Never cut or coil up the antenna. You may fold the antenna in half if space is a concern. This may affect range.



## ORDERING

5800RPS

Wireless Recessed Transmitter

**Automation and Control Solutions**  
Honeywell Security & Communications  
2 Corporate Center Dr. Suite 100  
P.O. Box 9040  
Melville, NY 11747  
www.honeywell.com

L/5800RPSD/D  
June 2011  
© 2011 Honeywell International Inc.

# Honeywell