

Phone/Fax: 888-686-7245(RAIL)

Email: sales@stainlesscablerailing.com

Website: www.stainlesscablerailing.com

Address: 3315 NE 112th Ave #72/73
Vancouver, WA 98682

GENERAL SWAGING INSTRUCTIONS

Choose **STAINLESS CABLE & RAILING™** for all your fittings and cable rail assemblies!

SIMPLE, STRONG

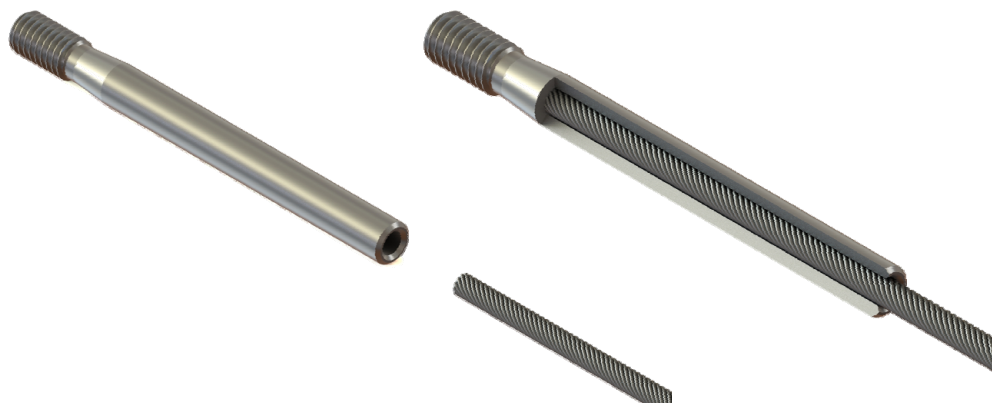
Just follow these simple steps:

1. NECESSARY TOOLS

- a. Cable Crimper
- b. Black Marker
- c. Leather Gloves



2. Insert cable into terminal or tensioner all the way.

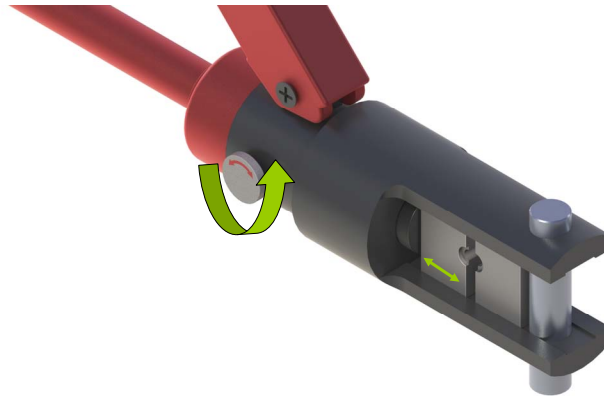


3. Mark the cable.

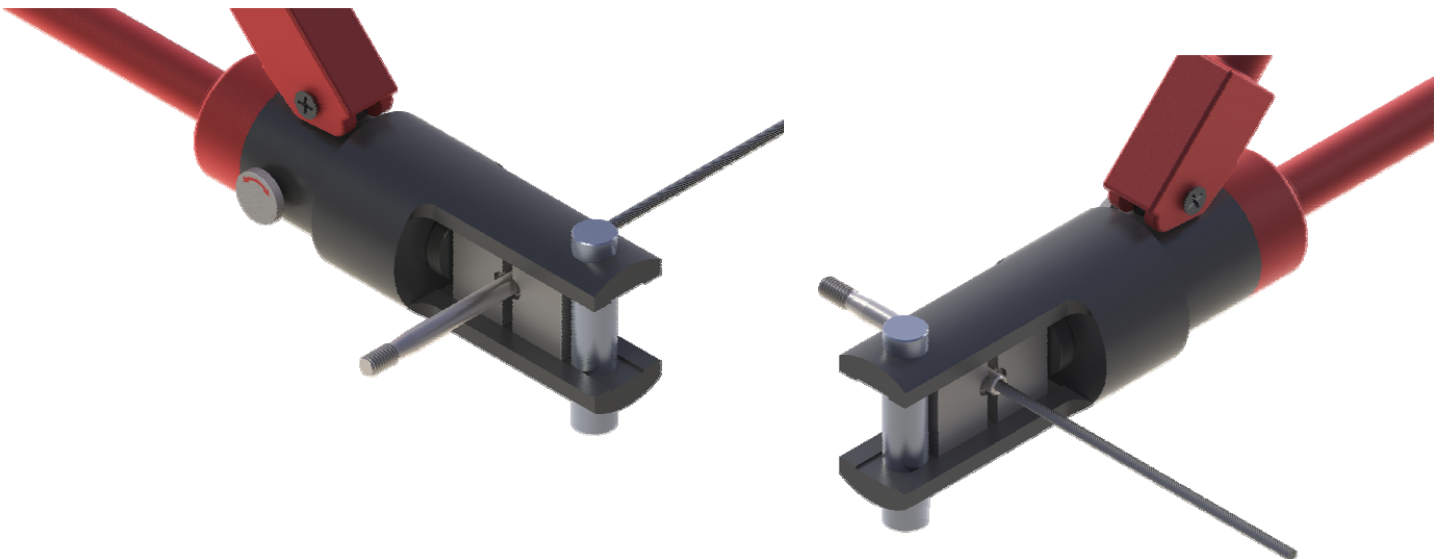
Using the black marker, mark the cable to provide a visual reference that the cable remains fully seated down inside the fitting and does not slip out.



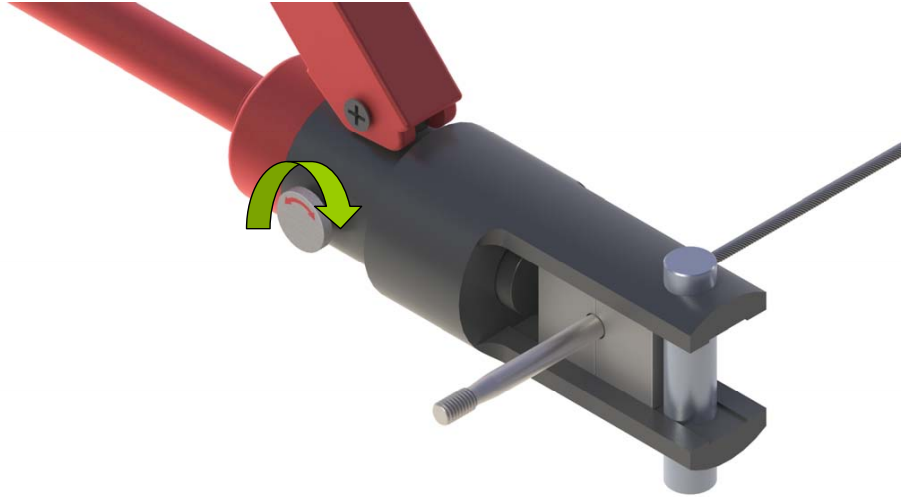
4. Turn the knob to counterclockwise of the Crimper to open jaws.



5. Position the jaws around the fitting, 1/8" from where the cable enters the fitting.

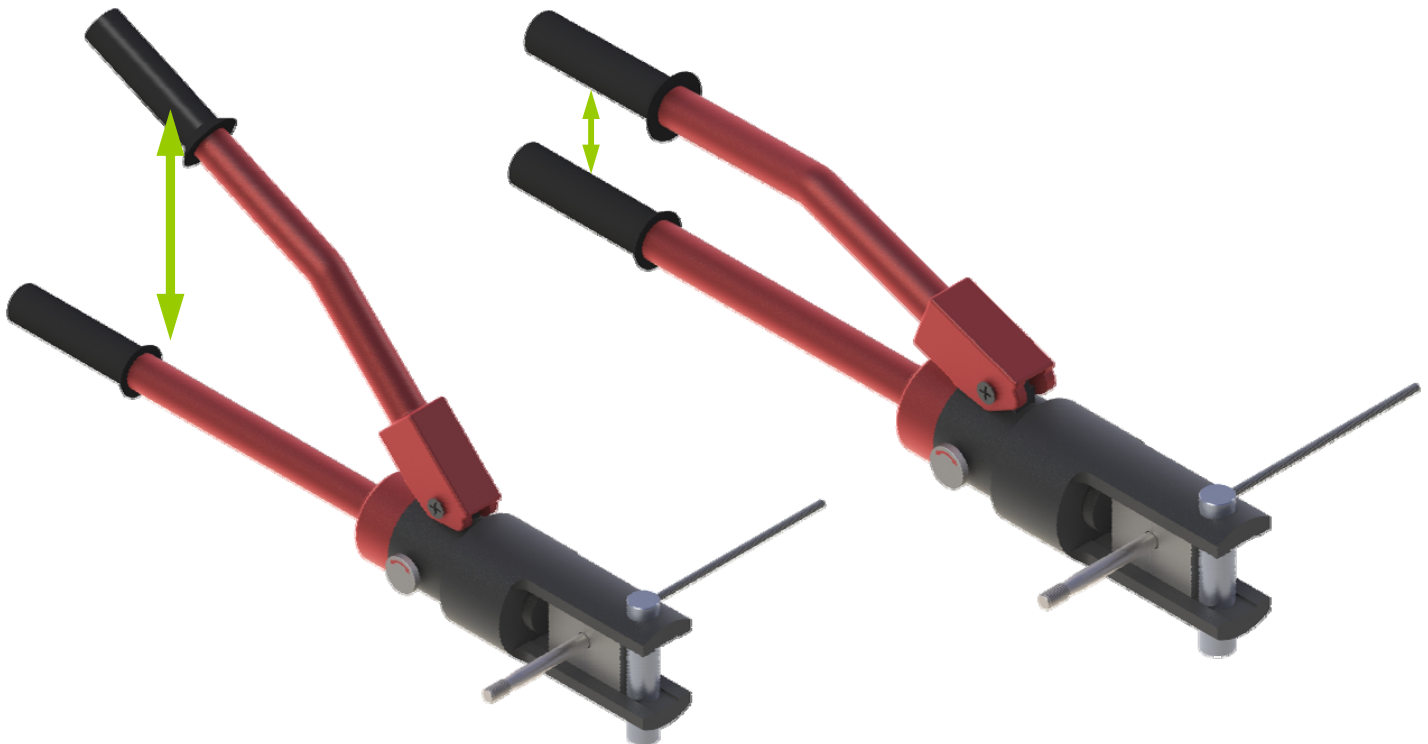


6. Turn the knob clockwise to tighten jaws.

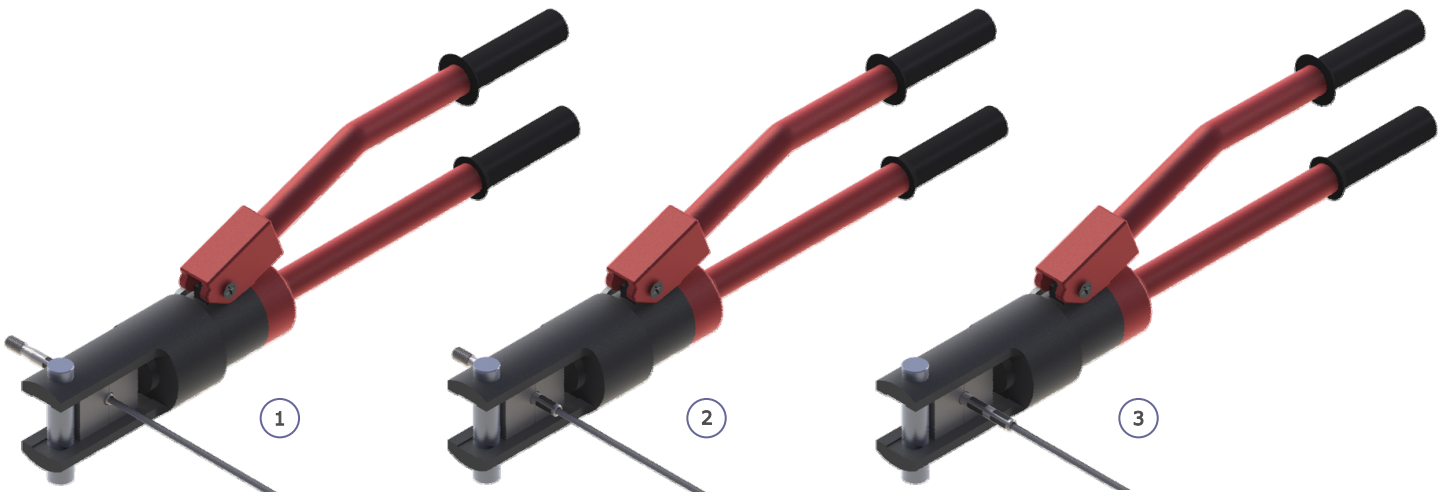


7. Pump the handle consecutive times until the two jaw halves nearly touch.

WARNING: Only firm handle pressure is needed to close the jaw halves. Applying excessive force to the tool will result in damage.



8. Reposition the dies 1/4" further along the fitting and rotate 45 degrees. Repeat the crimping process for a total of three crimps.



THE CRIMPED TERMINAL (OR TENSIONER) :

