

Z-Wave Energy Bridge



INSTALL INSTRUCTIONS

These instructions are for pairing the Z-Wave Energy Bridge with a Current Cost Transmitter and CT-Clamps.

Box Contents

- Z-Wave Energy Bridge

TIP: Go to 2gig.dealer.com for instructions on how to use the Z-Wave Energy Bridge as a Lighting/Dimmer Module.

NOTE: The CT-Clamps and the Transmitter are sold separately.

(Step 1) Pair Transmitter and Z-Wave Energy Bridge

- Using the tip of a paper clip (or something smaller), press and hold (up to 12 seconds) the small button on the front of the transmitter (see Figure 1) until the red LED flashes once. Release the button and the red LED will begin to flash rapidly.
- While the red LED flashes, press and hold the button on the Z-Wave Energy Bridge (see Figure 2) while plugging it into an outlet. This causes the green LED to flash rapidly on the Z-Wave Energy Bridge.
- The red LED light on the transmitter and the green LED light on the Z-Wave Energy Bridge will continue to flash rapidly for about 60 seconds after which, both LEDs will flash in sync about every 10 seconds, signalling that the transmitter and the Z-Wave Energy Bridge have been successfully paired.



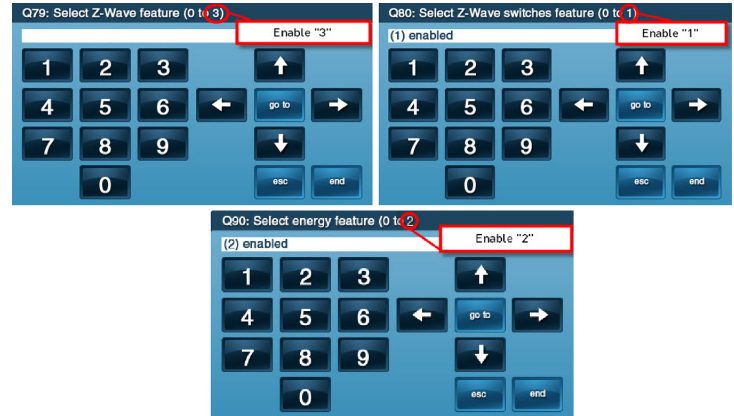
NOTE: After 3 minutes, the LED on the Z-Wave Energy Bridge will stop flashing.

NOTE: Install CT-Clamps following the instructions that come in the CT-Clamp box.

CAUTION: All equipment must be installed by Licensed Professionals.

(Step 2) Enable Z-Wave and Energy Feature Settings

- From the Control Panel's **Home Screen**, Press **Security / Menu / Toolbox**. Enter the installer code.
- Scroll right using the → arrow until you see the **Installer Toolbox** button. Press it.
- From the **Installer Toolbox**, press **System Configuration**.
- Press **Go To** to jump directly to a programming questions 79, 80 and 90. Make sure that the questions are set to the following:
 - Set **Question 79 to 3**
 - Set **Question 80 to 1**
 - Set **Question 90 to 2**

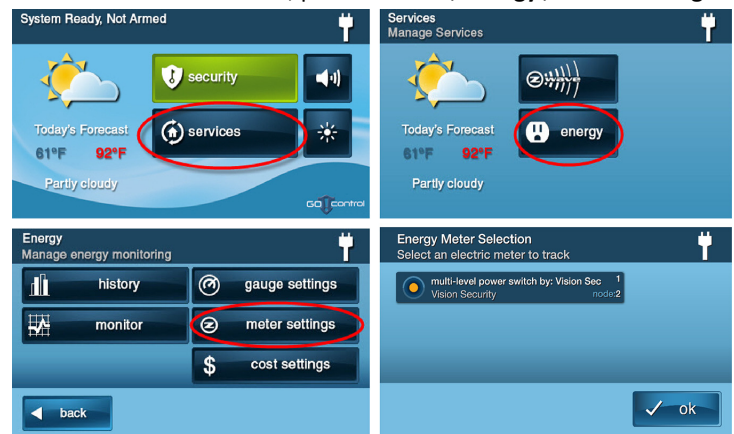


- Exit programming, by clicking **end** and **exit**. Upon exit, the panel takes one to two minutes to reboot.
- After the Control Panel reboots, from the **Home Screen** press **Services / Z-Wave / Toolbox / Enter Installer Code / Add Devices**.
- Press the Z-Wave Energy Bridge center button **twice**. The Control Panel should display that the Z-Wave Energy Bridge has been learned in.

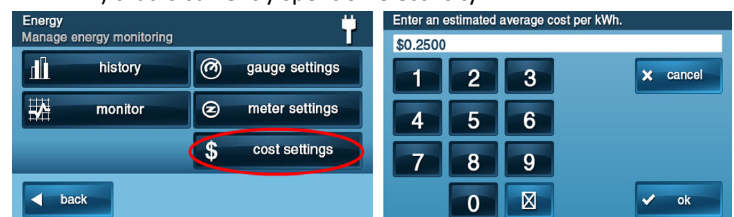
NOTE: If the Z-Wave Energy Bridge doesn't appear as a device that has been learned in, remove the device and try re-adding it.

(Step 3) Program Energy Management Settings

- From the **Home Screen**, press **Services / Energy / Meter Settings**.

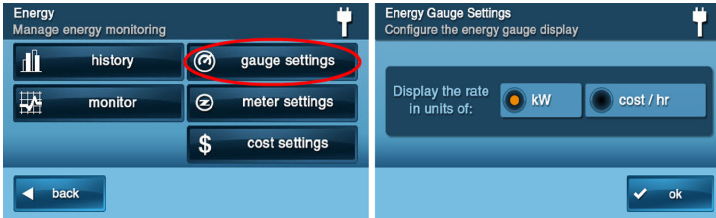


- Press **ok**.
- From the **Energy Screen**, press **Cost Settings**. Input the cost (per KWh) that is currently spent on electricity.

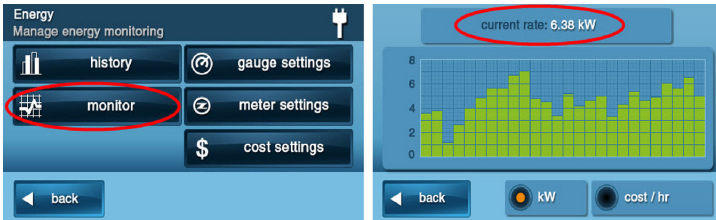


- Press **ok**.

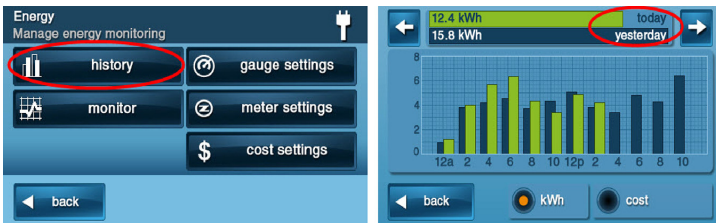
- 5 From the **Energy Screen**, press **Gauge Setting**. Configure the gauge settings that will be displayed on the **Home Screen**.



- 6 Press **ok**.
- 7 From the **Energy Screen**, press **Monitor**. Ensure that the energy monitor is displaying real-time data. The data should update every 12 seconds.



- 8 From the **Energy Screen**, press **History**. Show the end-user that they can view their energy consumption by day, week, month and year.



- 9 When you are finished entering the gauge settings, the **Home Screen** will alternately display the date/time and either the KW per/hour or the cost per/hour.



Specifications*

Z-Wave chip	300 Series
Software	5.0x
Operational Voltage	120VAC, 60 Hz
Range	Up to 100 feet line of sight between the Controller and/or closest Z-Wave Receive module
Frequency	908.42MHz
Maximum Load	Incandescent: 600W Max, 120VAC Resistive: 15 amps (1800 watts) Maximum 120VAC Motor: 1/2 H.P. Max, 120VAC

*For Indoor Use Only

REGULATORY INFORMATION

FCC ID: KFR-ZBRG433

INDUSTRY CANADA ID: 3318A-ZBRG433

This device complies with Part 15 of the FCC's Rules. Operation is subject to the following two conditions:

- 1 This device may not cause harmful interference
- 2 This device must accept any interference received, including interference that may cause undesired operation.

This equipment has been tested and found to comply with the limits for a Class B digital device, pursuant to Part 15 of the FCC Rules. These limits are designed to provide reasonable protection against harmful interference in a residential installation.

This equipment generates, uses and can radiate radio frequency energy and, if not installed and used in accordance with the instructions, may cause harmful interference to radio communications. However, there is no guarantee that interference will not occur in a particular installation. If this equipment does cause harmful interference to radio or television reception, which can be determined by turning the equipment off and on, the user is encouraged to try to correct the interference by one or more of the following measures:

- Reorient or relocate the receiving antenna.
- Increase the separation between the equipment and receiver.
- Connect the equipment into an outlet on a circuit different from that to which the receiver is connected.
- Consult the dealer or an experienced radio/TV technician for help.

This product complies with FCC radiation exposure limits for an uncontrolled environment. Avoid operating this product at a distance less than 20cm from user.

CAUTION: Any changed or modifications not expressly approved by the party responsible for compliance could void the user's authority to operate this equipment.

Limited Warranty

This 2GIG Technologies product is warranted against defects in material and workmanship for 1 year. This warranty extends only to wholesale customers who buy direct from 2GIG Technologies or through 2GIG Technologies' normal distribution channels. 2GIG Technologies does not warrant this product to consumers. Consumers should inquire from their selling dealer as to the nature of the dealer's warranty, if any.

There are no obligations or liabilities on the part of 2GIG Technologies for consequential damages arising out of or in connection with use or performance of this product or other indirect damages with respect to loss of property, revenue, or profit, or cost of removal, installation, or reinstallation. All implied warranties for functionality, are valid only until the warranty expires. This 2GIG Technologies Warranty is in lieu of all other warranties expressed or implied.

For technical support in the USA and Canada:

855-2GIG-TECH (855-244-4832)

Email: techsupport@2gig.com

Internet: dealer.2gig.com

Visit web site for technical support hours of operation

For technical support outside of the USA and Canada:

Contact your regional distributor

Visit dealer.2gig.com for a list of distributors in your region

PN: 77-000199-001 Rev. A

