

# ELK-M1

## Wiring M2M's MiNi/MQ Series Cellular Communicators and Programming the Panel

**CAUTION:**

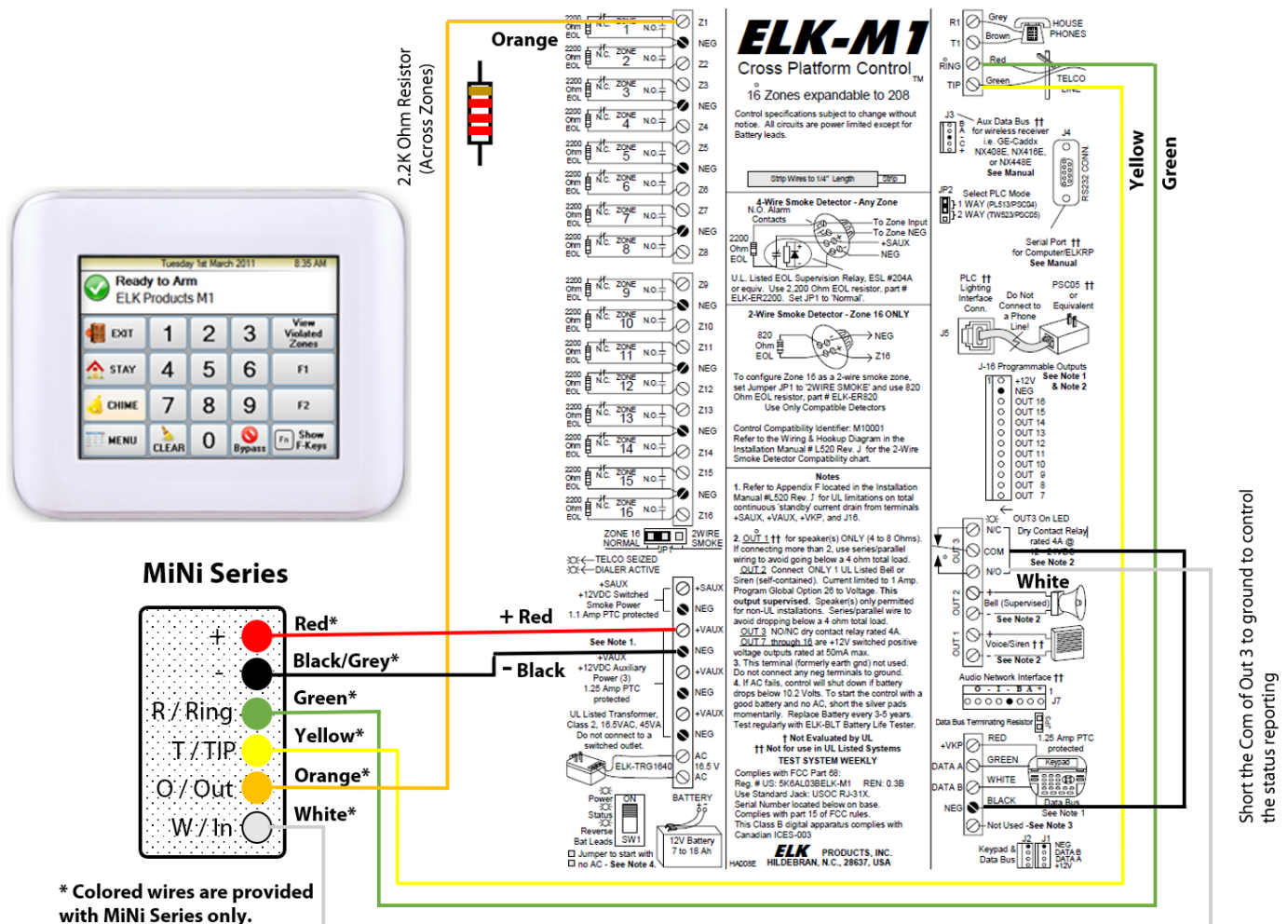
- It is advised that an experienced alarm installer programs the panel as further programming may be required to ensure proper performance and use of the full functionality.
- Do not route any wiring over circuit board.
- Full panel testing, and signal confirmation, must be completed by the installer.

**NEW FEATURE:** For MiNi/MQ Series Communicators, the status of the panel can be retrieved not only from the status PGM but now also from the Open/Close reports from the dialer. Therefore, wiring the white wire and programming of the status PGM of the panel is optional.

Wiring the white wire is necessary only if the Open/Close reporting is disabled.

**IMPORTANT NOTE:** The Open/Close reporting needs to be enabled during the initial pairing procedure.

### Wiring the MiNi Series communicators to ELK-M1

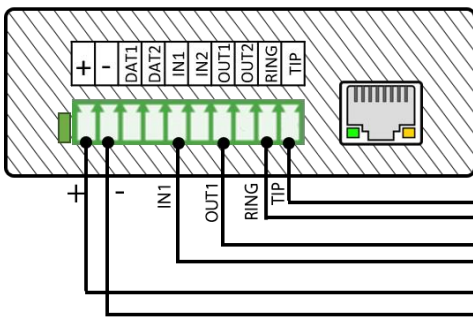


Short the Com of Out. 3 to ground to control the status reporting

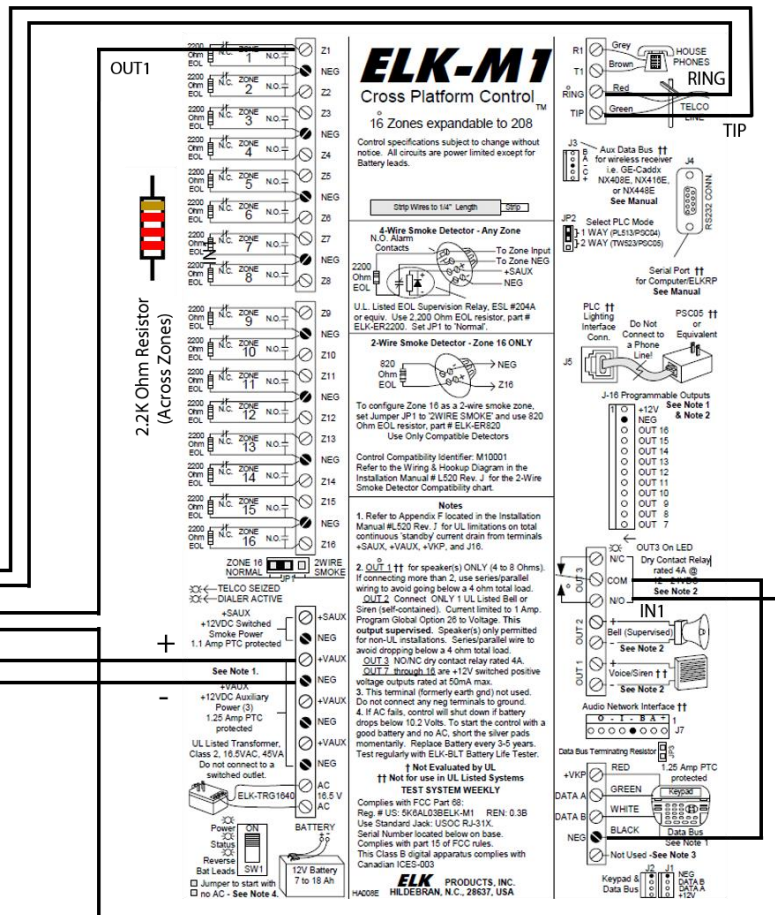
# Wiring the MQ Series communicators to ELK-M1



## MQ Series



MQ Series are sold with terminal blocks for easy wiring. Recommended are wire sizes from 14 to 22 AWG.



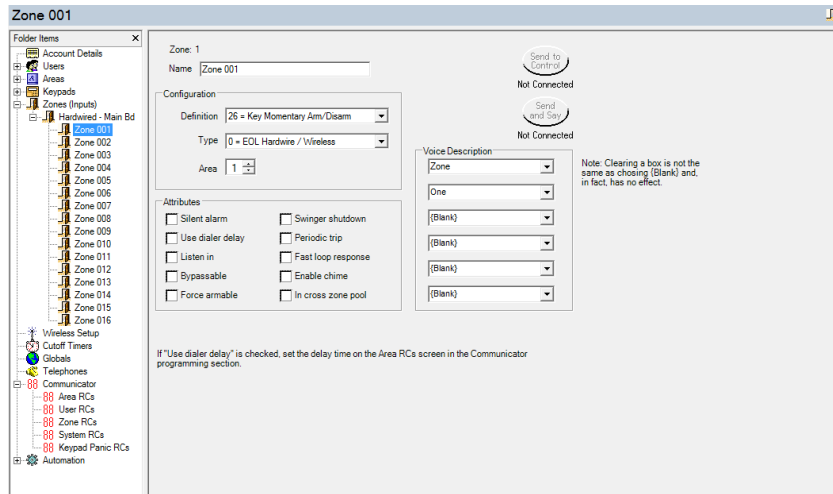
## Programming the ELK-M1 Alarm Panel via the Keypad

Enable Contact ID reporting:

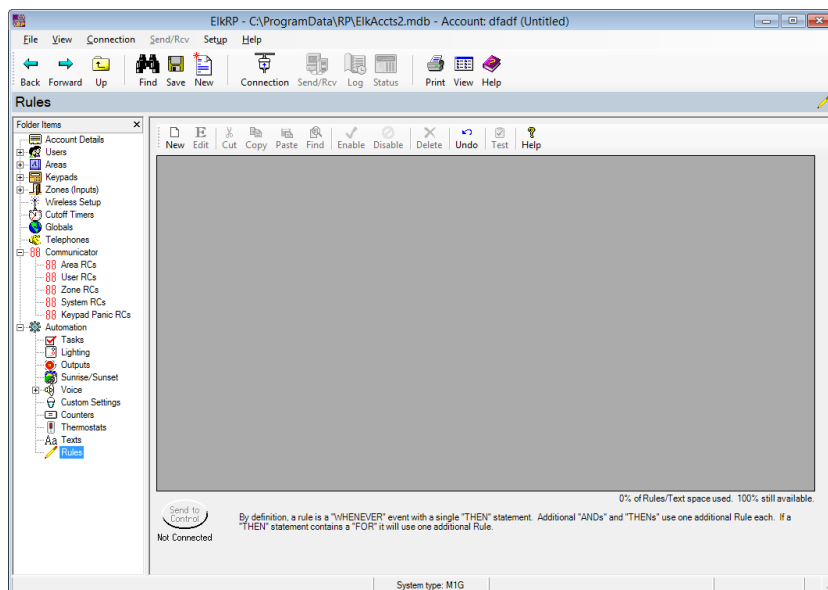
Display	Keypad Entry	Action Description
Home screen	Menu > Installation programming > Enter code if required	To enter programming mode (default is 172839).
Available menus	Telephone Account Setup	
Telephone number:	1, Select	To start configuring telephone number 1 options
T1 Option 01: Format	1 = Contact ID, Next Option	Set reporting format to Contact ID
T1 Option 02: Type	Select, 0 = Always Report, Next Option	Set reporting type to "Always report"
T1 Option 03: Number	Select, 123456, Select option	Set telephone number to 123456
T1 Option 03: Number	Next option, Next option	Press "Next option until you reach "T1 Option 05:"
T1 Option 05: Account Number Area 1	Select, 001234, Next option	Enter the desired account number (001234 is an example). The first 2 digits will be trimmed
T1 Option 06: Account Number Area 2	13	Press 13 to go to "T1 Option 13:"
T1 Option 13: Report Area, Alarm, Restore & Unbypass	Select, Yes, Next option	Enable reporting for these events. Press "Next option" to save and go to the next option
T1 Option 14: Report Bypasses	Select, Yes, Next option	Enable reporting for these events. Press "Next option" to save and go to the next option
T1 Option 15: Report Zone Troubles	Select, Yes, Next option	Enable reporting for these events. Press "Next option" to save and go to the next option
T1 Option 16: Report User Report Codes	Select, Yes, Next option	Enable reporting for these events. Press "Next option" to save and go to the next option
T1 Option 17: Report Global System Events	Select, Yes, Next option	Enable reporting for these events. Press "Next option" to save and go to the next option, Select phone number Menu to go to the main menu screen
Available menus	Area Reporting Codes	To go to Area Reporting Codes menu
Report Codes Area: 1	Select	To go to Area 1's reporting codes menu
Area 1 Option 01: Dialer Delay	Select, 000, Select option	Ensure that this option has a value of 000.
Area 1 Option 01: Dialer Delay		In the range 04 – 19 are the values for different events. Enable the ones required by your installation. When you're done in this menu, go back to the main programming screen.
Available menus	Next Page, User Report Code	Here are the settings for the users' Open/Close reports. Set Open and Close settings to something different than 00 in order to enable the reporting for the event.
User 001: USER 1 Open = 00 Close = 00	Select, 01, 01	Just for example we have enabled the Open/Close reports for User 001 in this row. When you enter the values, they are being automatically saved and the system moves the cursor to users selection. Enable the users required by your installation following this procedure.
User 001: USER 1 Open = 01 Close = 01	Menu, Menu, Exit Menu	Press these buttons to exit programming mode.

## Program Keyswitch zone and output:

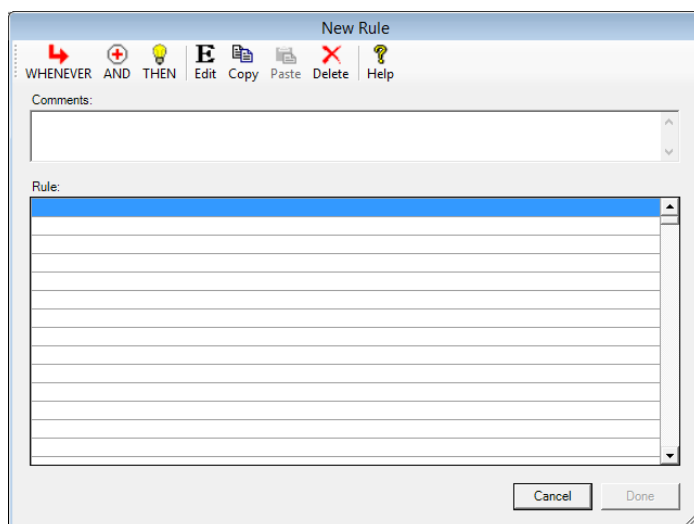
Although the Keyswitch zone can be configured through the keypad, the OUTPUT can be configured only through the panels' software - therefore in this manual we will configure both the zone and the output through the software.

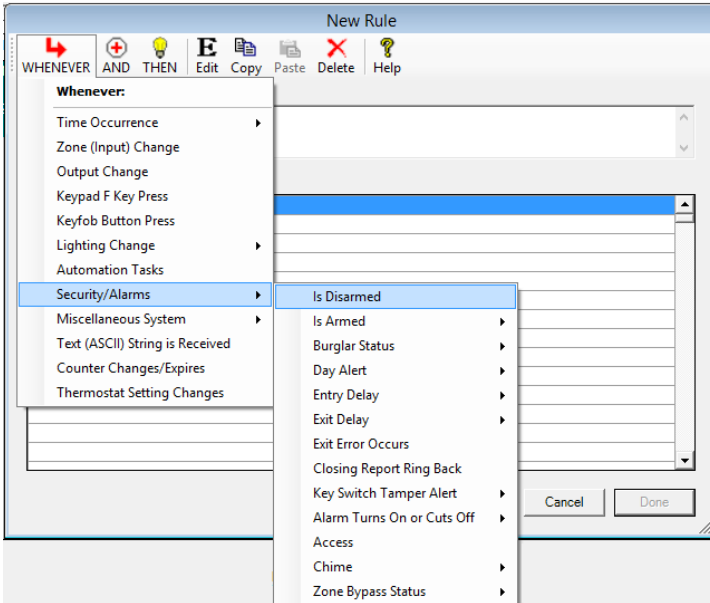


From ZONES, select Zone 1, Configure as Key Momentary ARM/DISARM, Type 0 = EOL, Area 1, Press Send to Control

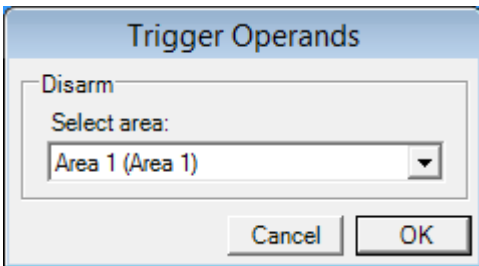


Go to account details > Automation > Rules > Click on New to create New rule

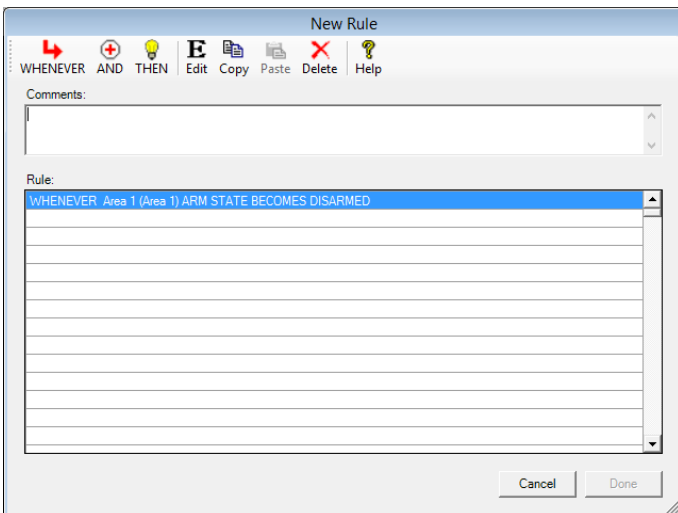


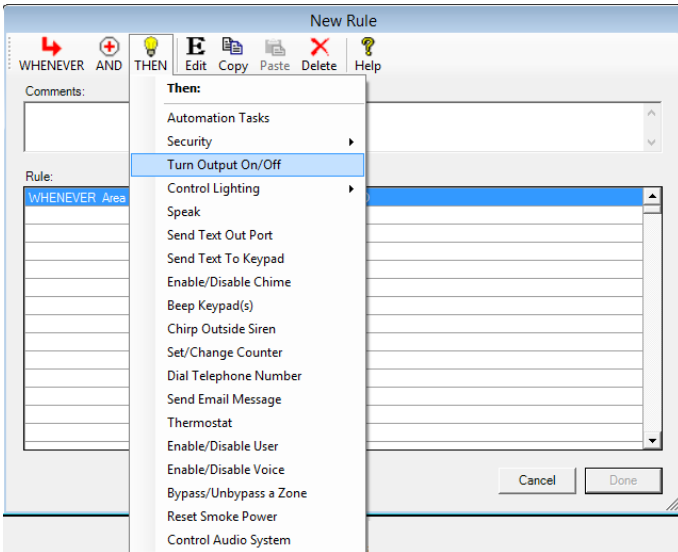


Whenever > Security/Alarms > Is Disarmed

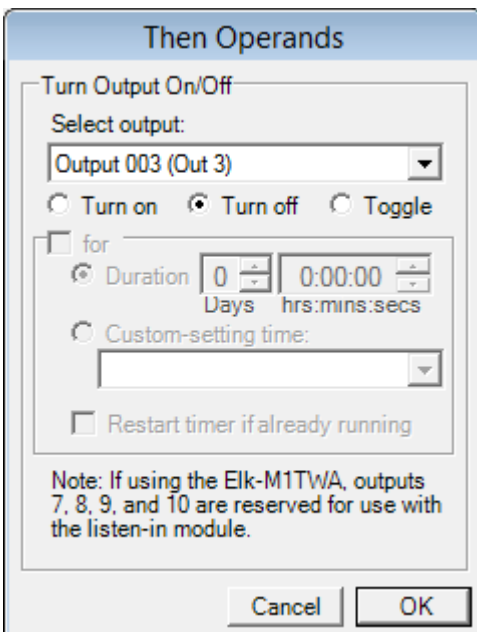


Select desired Area

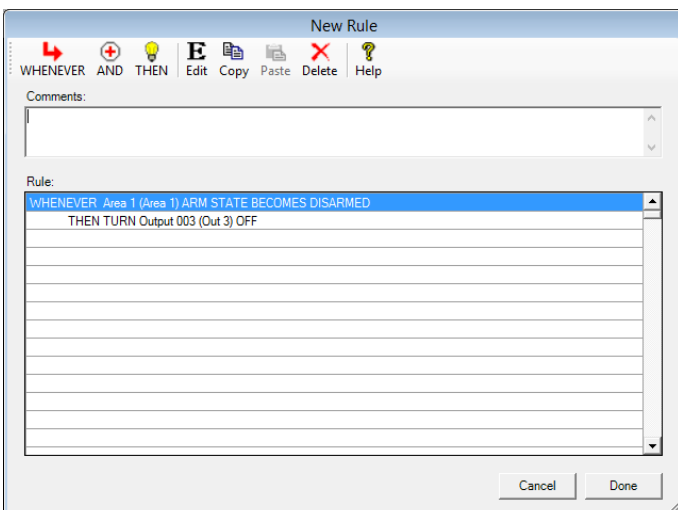




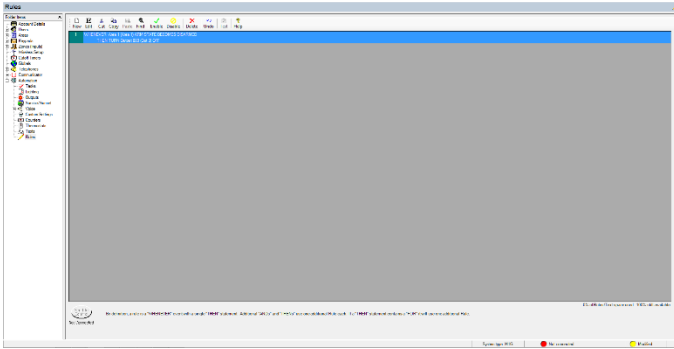
Then > Turn Output On/Off



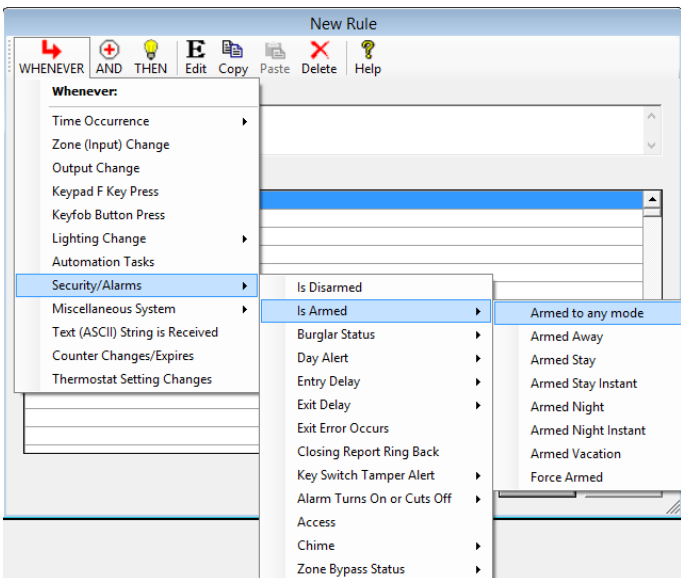
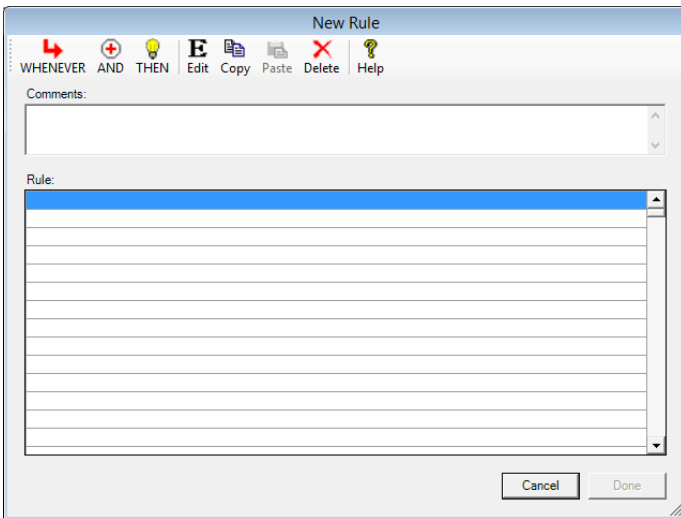
Select Output 003 > Turn off > OK



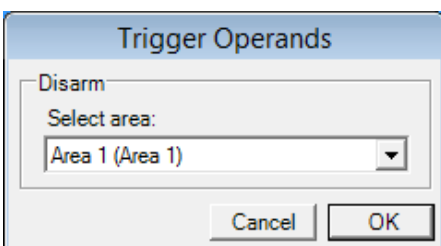
Select Done to go back to Rules menu



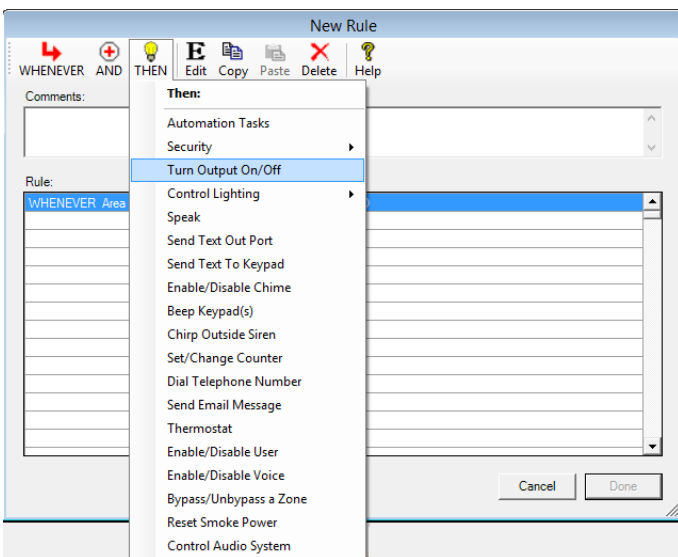
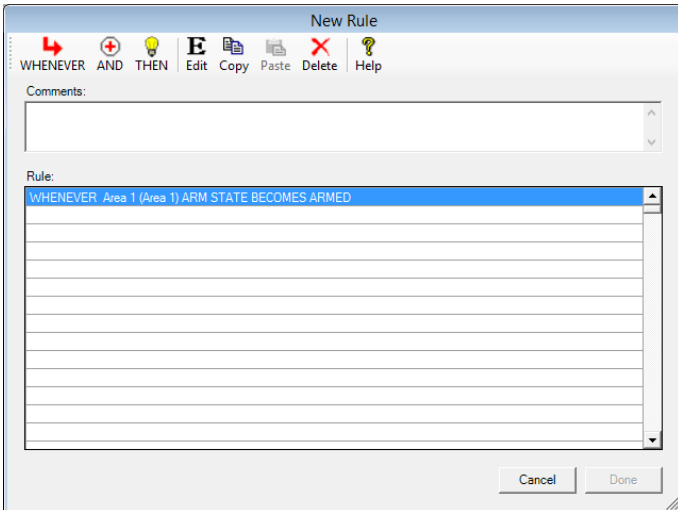
Select New to create new Rule



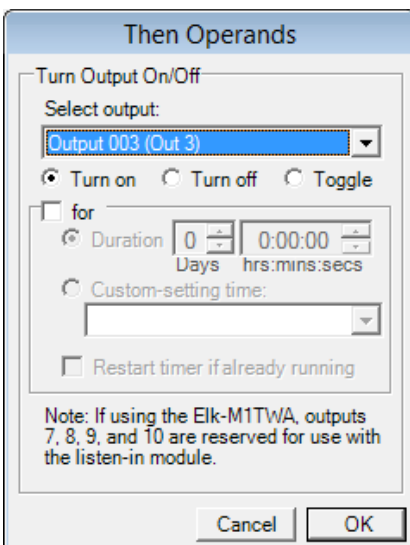
Whenever > Security/Alarms > Is Armed > Armed to any mode



Select Area 1 and press OK

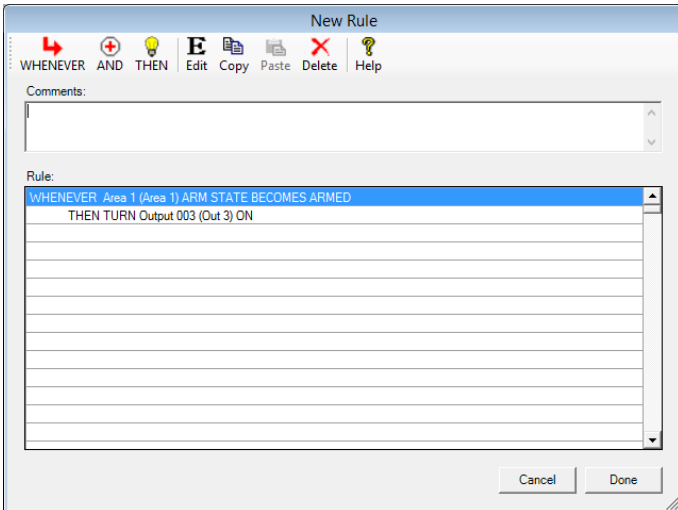


Select Then > Turn Output On/Off

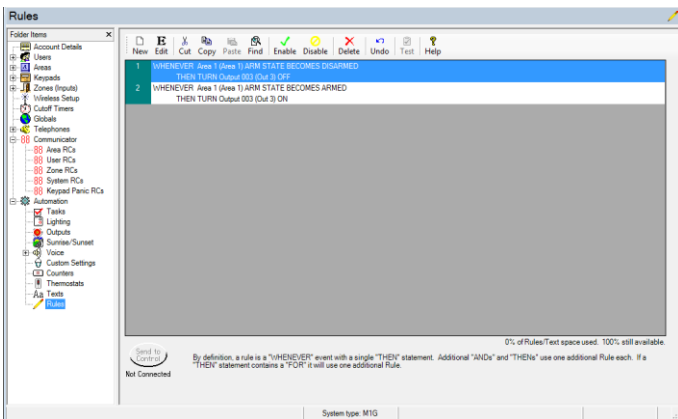


Select Output 003 > Turn On > OK





Press Done to confirm



Press Send to control to activate the rules