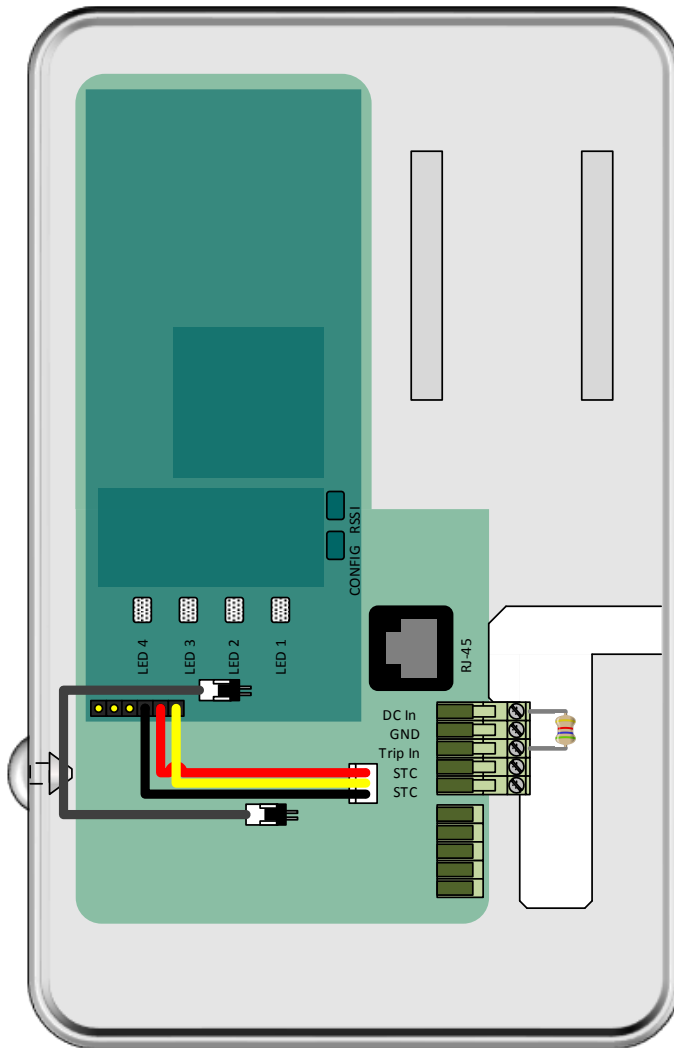


# TG-SCI Plus

INSIDE VIEW



## QUICK INSTALL GUIDE

### 1 Register for Telguard Service

Register online at [www.telguard.com](http://www.telguard.com)

### 2 Connect Dialer and Power to the TG-SCI Plus

Connect the alarm panel's dialer to the RJ-45 jack on the TGSCIPG01. If using the Single Line Interface Cable (SLIC) for power, connect the RJ-45 cable's orange wire to the alarm panel's ground and its blue wire to the panel's auxiliary power. If using the terminal block, connect the terminals closest to the RJ jack (labeled **GND** and **DC IN**) to the panel's ground and power, respectively.

### 3 Measure RSSI and Activate

Apply power and press the RSSI button to put the LEDs into RSSI display mode. When you find a location that provides 2 ½ bars or more (LEDs 4, 3 solid ON and 2 flashing), you are ready to activate. Press the RSSI button again to return the LEDs to normal display mode, and trigger and alarm from the panel. The first alarm will activate the unit with the TCC and will not be sent to the central station. When activation is successful, LED 1 will turn solid green.

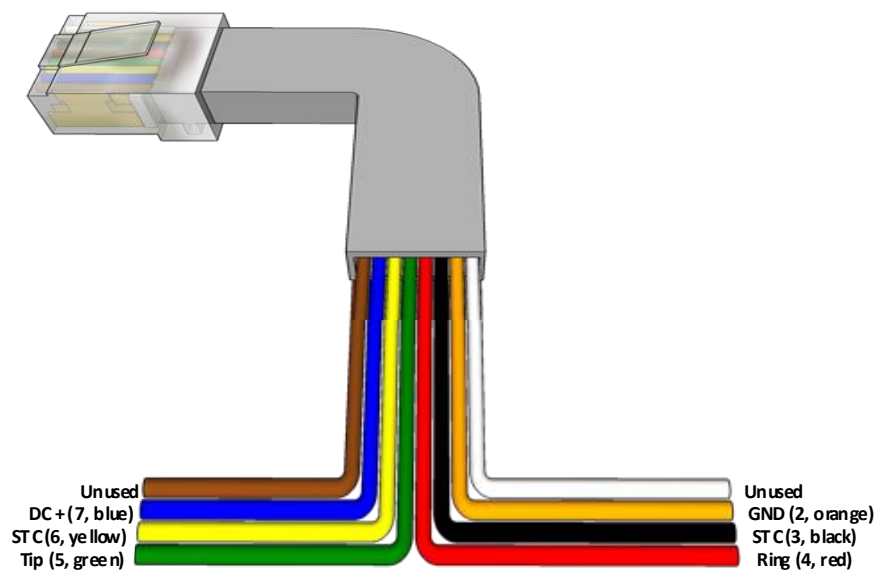
### 4 Finish Installation

Send more signals and confirm delivery with central station. Use the provided hardware to mount the device.

## Button Descriptions (*Accessible when cover is off*)

Button	Functions
CONFIG	<ul style="list-style-type: none"> <li>Press &amp; release to trigger WPS Push-Button association.</li> <li>Press &amp; hold for 5 seconds then release to enable the Wi-Fi Configuration AP.</li> <li>Press &amp; hold for 15 seconds then release to restore Factory Defaults.</li> </ul>
RSSI	<ul style="list-style-type: none"> <li>Press &amp; release to switch between normal mode and RSSI mode.</li> <li>Press &amp; hold for 5 seconds then release to send a test message to the TCC.</li> </ul>

## Single Line Interface Cable (S.L.I.C.)



P/N 56048603

## LED Indicators (Normal Display)

Indicator	Description
LED 1	Telguard Registration & Activation
LED 2	Cellular Status
LED 3	Wi-Fi Status
LED 4	Not Used (Used only in RSSI Mode)

## LED Indicators (RSSI Display)

RSSI Value	Illuminated LEDs	RF (dBm)
NO SVC	LED 4 = slow flashing Red LED 3-1 = off	n/a
1	LED 4 = solid Amber LED 3-1 = off	$\leq -111$
1½	LED 4 = solid Amber LED 3 = slow flashing Amber LED 2-1 = off	$\geq -110$
2	LED 4-3 = solid Amber LED 2-1 = off	$\geq -100$
2½	LED 4-3 = solid Green LED 2 = slow flashing Green LED 2 = off	$\geq -90$ (Minimum signal strength required)
3	LED 4-2 = solid Green LED 1 = off	$\geq -80$
3½	LED 4-2 = solid Green LED 1 = slow flashing Green	$\geq -70$
4	LED 4-1 = solid Green	$\geq -60$

For more detailed installation descriptions, please refer to the Telguard Installation and Operating Instructions available for download at [www.Telguard.com](http://www.Telguard.com)