

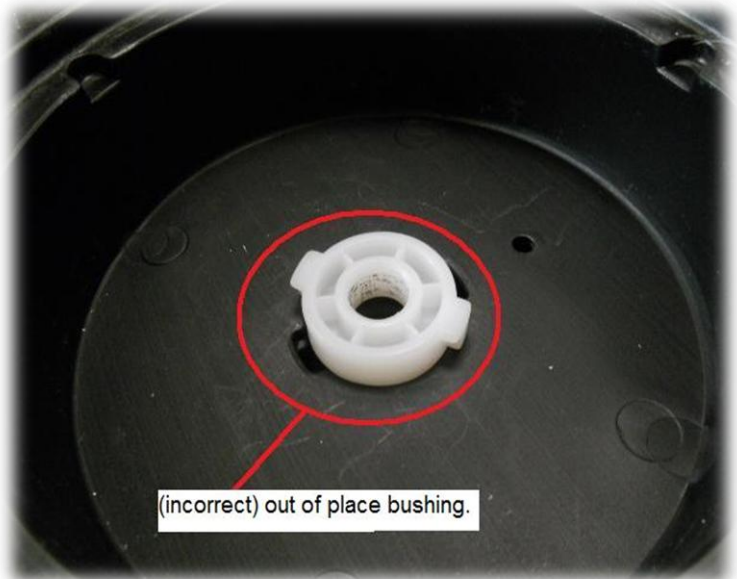
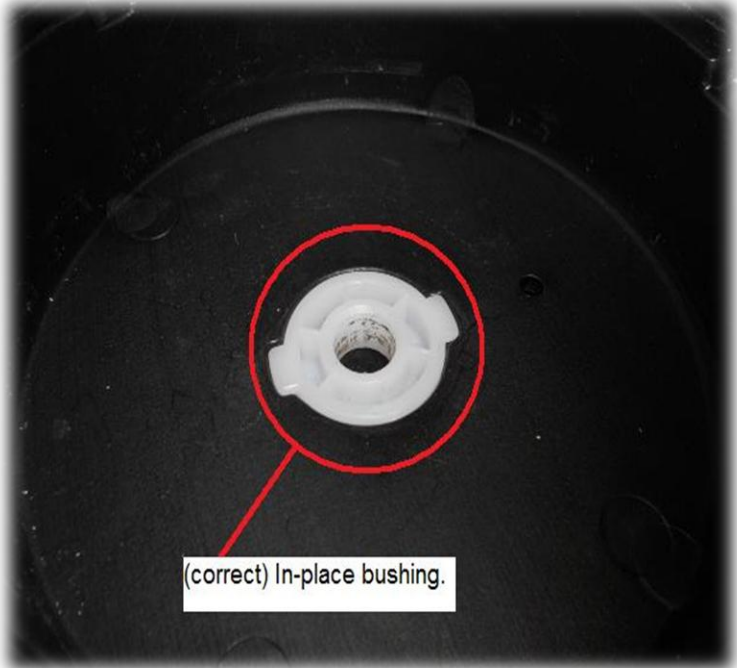


Troubleshooting Guide 4x4 Two-Seater:

Possible reasons for Rear Axle been too short

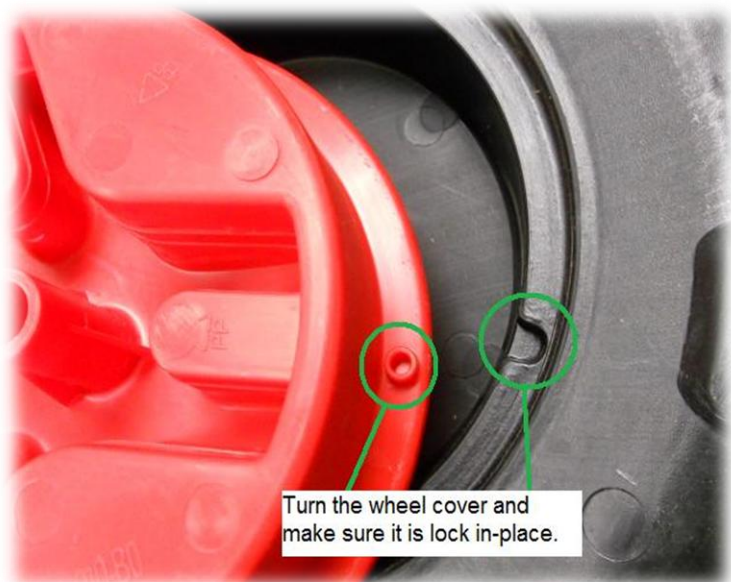
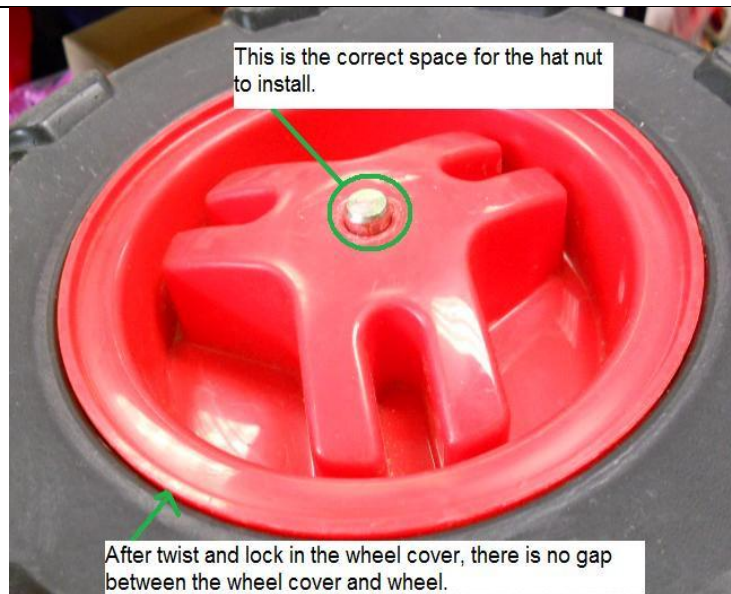
1. Bushing is not in place

Correct and Incorrect bushing placed

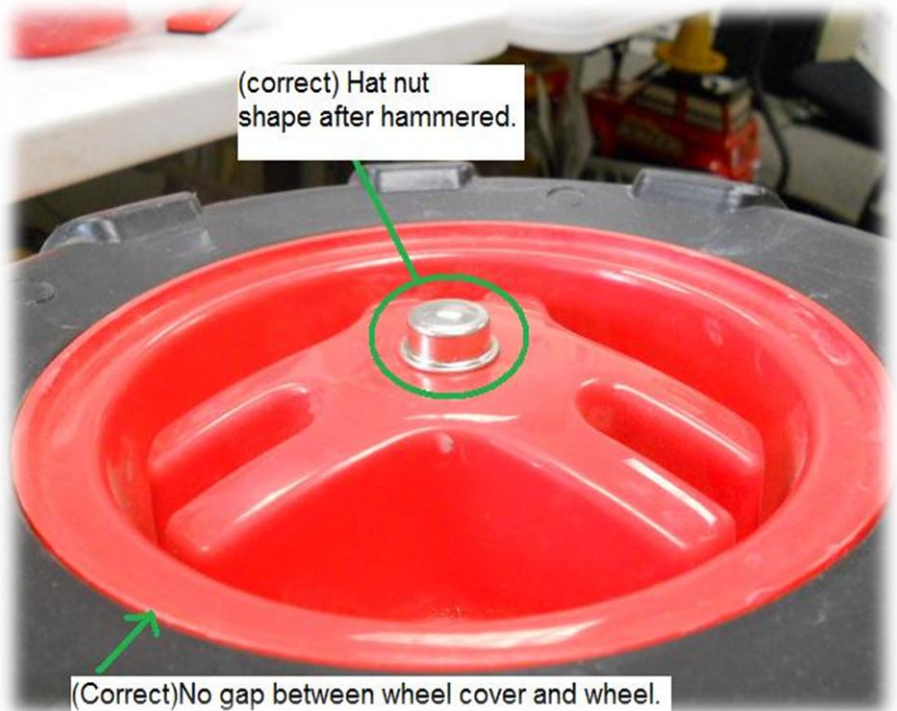


2. Wheel cover is not in place

Correct and incorrect wheel cover in place.



3. Incorrect hat nut installation



4. Use the proper tool



Space require



Use stopper