

MODEL NO.

1207 1209

1208 1210

AGES 3+

# BMW M6 GT3

Battery Operated Ride On

## OWNER'S MANUAL

Please read entire manual before starting assembly and keep this manual along with your purchase receipt for future reference.



### WARNING:

CHOKING HAZARD-Small parts.  
Not for children under 3 years.



### WARNING:

Toy must be assembled by adult before use.



### CAUTION

Screws contain potentially hazardous sharp points or sharp edges. Adult assembly required.



### WARNING:

To reduce the risk of injury, adult supervision is required. Never use on road ways, near motor vehicles, on or near steep inclines or steps, swimming pools or other bodies of water. Always wear shoes, and never allow more than one rider.



Contents, colors and decorations may vary from those shown.

# IMPORTANT

You must charge your battery for 12 hours before you use your vehicle for the first time.

Remember to...

- ✓ Charge the battery immediately after each use.
- ✓ Charge the battery at least once a month during storage, even if the vehicle has not been used.

The battery will be permanently damaged and void your warranty if you fail to follow the instructions. Please refer to the Battery Care Section in this manual for more information.

# LIMITED WARRANTY

(The warranty and customer service contact in this manual only apply in the United States and Canada)

All NPL vehicles are covered by a ninety day warranty against defects in materials or workmanship from the date of purchase from an authorized retailer. The warranty covers the NPL vehicle which has been used under normal circumstances, solely for the purpose for which it was intended and has been given proper care and maintenance. The warranty does not cover damage caused by the customer, damage which results from normal wear and tear or from alterations made by the customer, or damage caused by use for an unintended purpose. Shipping and handling are not covered by this warranty.

Please keep the original purchase receipt for any warranty claims, and inspect the product upon purchase for any defects or missing parts.

We are here to help -

- For parts, please visit: [www.funcreation.net](http://www.funcreation.net)
- For Customer Service, please email us: [customerservice@funcreation.net](mailto:customerservice@funcreation.net)
- Or call us: 1-909-643-9359

# Table of Contents

|                                 |       |
|---------------------------------|-------|
| Limited Warranty .....          | 1     |
| Important Information .....     | 2     |
| Warning .....                   | 3     |
| Battery Warning .....           | 4     |
| Battery Charging .....          | 5     |
| Battery Care and Disposal ..... | 6     |
| Parts List .....                | 7     |
| Assembly.....                   | 8-11  |
| Operating your Vehicle .....    | 12-14 |
| Trouble Shooting .....          | 15-17 |

## Important Information

- Your new vehicle requires adult assembly. Please set aside at least 45 minutes for assembly.
- You must charge your battery for 12 hours before you use your vehicle for the first time.  
**We recommend that you start charging your battery before beginning assembly.** Please see Battery charging beginning on page 5 for detailed instructions.
- Read this manual carefully for important safety information and operating instructions before using your vehicle. Keep these instructions for future reference as they contain important information.
- Do not operate on grass.
- This vehicle is designed for use on: concrete, asphalt or other hard surfaces; on generally level terrain; by children ages 3 and up.
- Instruct the children on operation and safe driving rules before they take their first drive:
  - always sit in the seat.
  - always wear shoes.
  - only one (1) rider at a time.
  - Do not place hands, feet or any part of the body, clothing or other articles near moving parts while the vehicle is in operation.
  - Do not allow other children near the car when driving.
- Use this vehicle ONLY outdoors. Most interior flooring can be damaged by riding this vehicle indoors.
- NPL will not be responsible for damage to the floor if the vehicle is used indoors.
- To prevent damaging the motors and gears, do not tow anything behind the vehicle or overload it. Do not exceed the maximum weight capacity of 66 lbs. (30 kg).
- If you have any questions about your KID MOTORZ vehicle, please call our service lines at **1-909-643-9359** from 9 AM to 5 PM (PST) Monday through Friday. Trained customer service representatives are available to take your call.
- Our service centers will repair or replace parts under warranty at no extra charge, and can perform non-warranty repairs for a minimal charge.

(The warranty and customer service contact in this manual only apply in the United States and Canada)

# Warning

## To Prevent Serious Injuries

- This product is intended for use by children ages 3 and up, and is not intended for children under 3 years of age due to lack of ability to operate safely.
- Maximum weight 66 lbs (30 kg). Only one rider at a time.
- Do not leave children unattended. Adult supervision required.
- This package contains small parts. Keep away from the children until assembled.
- Read manual for detailed safety information prior to use.
- Inspect product at regular intervals for wear or loose hardware and tighten as required. Remove from service if any abnormal conditions such as cracks or breaks exist.
- Check all coverings regularly to make sure they are in place.
- Batteries can fall out and injure a child if the vehicle tips over. Always use the battery cover.
- When the temperature falls below 0°F (-18°C), outdoor use of this product is not recommended.
- In extreme cold, plastic materials might lose resilience and may become brittle and crack upon impact. Store in a warmer and protected place.
- Do not operate the vehicle outdoors if it is raining. Keep it in a dry area when not in use.
- Disconnect the battery power supply when the vehicle is not in use to prevent the children driving the car without adult supervision.
- Always make sure the seat is securely attached.
- Only use the charger specified by manufacturer.
- The charger and battery are not toys and must be regularly examined for damage to the cord, plug, enclosure and other parts. In the event of damage, the damage or worn part must not be used until replaced.
- Never modify the electrical system. Use of the wrong type battery or charger could cause a fire or explosion.
- The battery compartment and area under seat are not storage areas. Storing other articles may create a fire hazard. Do not store any articles in or near motor compartment.

## Safe Driving Rules

- **ADULT SUPERVISION REQUIRED. MAKE SURE CHILDREN KNOW AND FOLLOW THESE RULES FOR SAFE DRIVING.**
- Restrict children to safe riding areas:
  - Away from swimming pools and other bodies of water to prevent drowning.
  - Level ground to prevent tip over and unintended downhill motion.
  - Away from steps, hills, driveways, roads and alleys.
- Teach and learn the safety first:

Although most children can master the physical driving skills to control the vehicles, they do not have the mature judgment skills. Never let a child drive at any time without adult supervision, and take the time to carefully evaluate child's skill levels and abilities to operate the vehicle safely. Children can not always recognize the hazards even after instruction. So teach appropriate safety rules before allowing any child to operate vehicle, and remember that **THERE IS NO SAFE SUBSTITUTE FOR DIRECT ADULT SUPERVISION.**
- **Riding rules :**
  - Always sit on the seat and wear shoes.
  - Only one rider at a time.
  - Do not operate in the street or near moving vehicles.
  - Do not operate near bodies of water, obstructions or drop-offs.
  - Do not operate on sand, dirt or gravel.
  - Do not operate in the dark. Unexpected obstacles could cause an accident.
  - Do not operate on inclines or steep slopes.
  - Do not operate near flammable vapors (e.g. gasoline, paint thinner, acetone, liquid wax, etc.) Using the vehicle near flammable liquids or vapors could cause an explosion or fire.
  - Do not place anything near moving parts such as motors, gears or wheels. Rotating parts can snag hair, fingers, etc., which may cause serious injury.

3

Warning

# Battery Warning

## ELECTRICAL HAZARD



### WARNING

Battery can fall out and injure a child if vehicle tips over. Always use battery cover.

#### PREVENT FIRE

- Never modify the electrical system. Alterations could cause a fire resulting in serious injury and could also ruin the electrical system.
- Use of the wrong type battery or charger could cause a fire or explosion resulting in serious injury.
- Use only components provided with products.
- Use other than provided could cause overheating, fire or explosion.
- The battery must be handled by adults only. The battery is heavy and contains sulfuric acid (electrolyte). Dropping the battery could result in serious injury.
- Never allow children to charge the battery.
- Battery charging must be done by adults only. A child could be injured by the electricity involved in charging the battery.
- Never lift or carry the battery by the wires or connector. This can damage the battery and possibly cause a fire resulting in serious injury. Lift and carry the battery by the case only.
- Read the safety instructions on the battery.
- Examine the battery, charger and their connectors for excessive wear or damage each time you charge the battery. If damage or excessive wear is detected, do not use the charger or the battery until you have replaced the worn or damaged part.



### CAUTION

Only use the battery specified by manufacturer.

Only use the charger specified by manufacturer.

Only use the charger in dry locations.

## About Thermal Fuses

- Your KID MOTORZ 12 volt battery is equipped with a built-in thermal fuse. The thermal fuse is a self-resetting safety device which automatically trips and shuts down operation of the vehicle if the vehicle is overloaded or the driving conditions too severe. Once a fuse has tripped it will automatically reset itself after approximately 10 seconds and allow the vehicle to resume normal operations. To avoid repeated automatic shut downs, do not overload the vehicle by exceeding the 66 lbs. (30 kg) maximum weight capacity or by towing anything behind the vehicle. Avoid severe driving conditions, such as driving up very steep slopes or running into fixed objects, which can cause the wheels to stop spinning while power is still being supplied to the motors.
- If a thermal fuse in a battery continually trips under normal driving conditions, please contact our Service Center at 1-909-643-9359.  
(The warranty and customer service contact only apply in the United States and Canada.)

## Important Notes

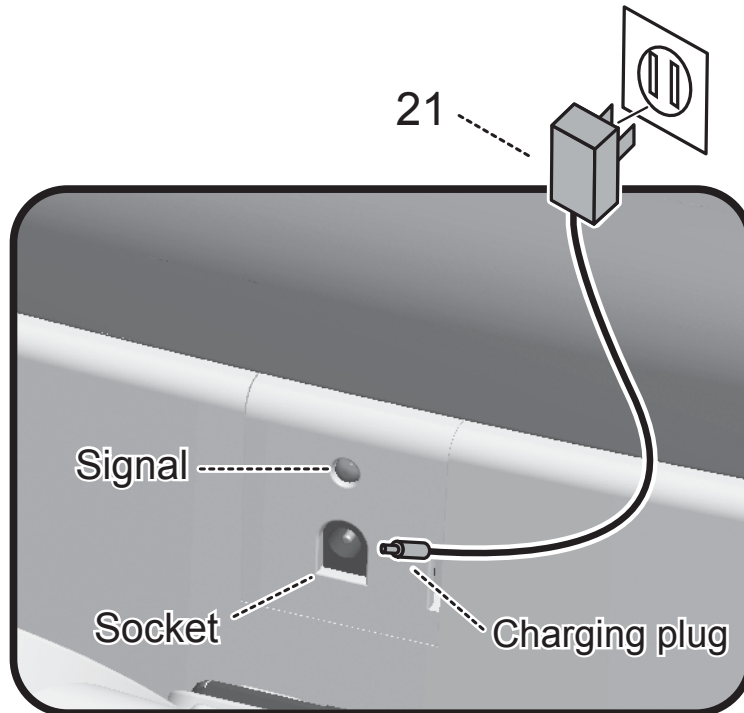
- This product needed to be provided with two DC 1.5V AAA batteries (not included in this product).
- Your new battery must be charged for at least 18 hours before you use it in your vehicle for the first time.
- You do not need to remove the battery from your vehicle to recharge it.
- The battery must be upright while charging.
- The charger is not a toy.
- Do not short circuit the battery.
- We recommend that you start charging your battery before beginning assembly of your new vehicle.
- Before charging the battery, examine the battery case for cracks and other damage which may cause sulfuric acid (electrolyte) to leak during the charging process.
- If damage is detected, do not charge the battery or use it in your vehicle. Battery acid is very corrosive and can cause severe damage to surfaces it contacts.
- Do not charge the battery on a surface which could be damaged by the acid contained inside the battery. Take precautions to protect the surface on which you charge your battery.
- If your battery is old and will not accept a charge, do not leave it in the vehicle. Always remove a dead battery from the vehicle.
- Non-rechargeable batteries are not to be recharged.
- Rechargeable batteries are only to be charged under adult supervision.
- Do not mix new and old batteries.
- Do not mix alkaline, standard (carbon-zinc), or rechargeable (nickel-cadmium) batteries.
- Rechargeable batteries (AA type) are to be removed from the toy before being charged.
- Only batteries of the same or equivalent type as recommended are to be used.
- Batteries are to be inserted with the correct polarity.
- Exhausted batteries are to be removed from the toy.
- The supply terminals are not to be short-circuited.

# Battery Charging



## CAUTION

- Non-rechargeable batteries are not to be recharged.
- Make sure the charger connector is matching with the charging port.
- Make sure the brand, voltage and frequency of the charger are in accordance with the wall outlet.
- Batteries are to be connected with the correct polarity.
- The supply terminals are not to be short circuited.



## Charge the Battery

The first charge will take about 12 hours.

1. The charging socket is located at the lower part of the car seat.
2. The battery and charger which are provided or recommended by NPL can only be used.
3. Please do not play with the charger and battery because they are not toys.
4. The battery charging operation is carried out only by adults but not children.
5. The color of the charging status lamp in the charger is red during charging and turns green after being fully charged.
6. The battery should be charged for 12 hours before first use, but cannot exceed 15 hours.
7. When the display voltage is as low as 9.6V, please charge it immediately.
8. The lukewarm phenomenon of the charger and battery will occur during charging.

- Only use the NPL 12 volt charger to charge your NPL 12 volt battery.
- Note: if power flow to the wall outlet is controlled by a switch, make sure the switch is "ON".
- Before first-time use, charge the battery for at least 12 hours. Never charge the battery longer than 15 hours.
- Do not charge or store battery upside down. Charging produces explosive gases. Charge away from flames, sparks and lit cigarettes. Charge in a well ventilated area.

# Battery Care and Disposal

## Care

- If a **battery leak** develops, avoid contact with the leaking acid and place the damaged battery in a plastics sealed bag.
- If acid comes in **contact with skin or eyes**, flush with cool water for at least 15 minutes and call a physician immediately.
- If acid is **internally ingested**, give water, milk of magnesia or egg whites immediately. Never give emetics or induce vomiting. Call a physician immediately.
- Charge a new battery for at least 12 hours before first use.
- Never charge the battery longer than 15 hours.
- Overcharging or undercharging the battery may shorten battery life and decrease vehicle running time.
- After the first charge, recharge the battery for at least 9-10 hours after each use. Never charge the battery longer than 15 hours. Charge the battery after each use, regardless of how long the vehicle was used.
- The battery must be upright while charging.
- Do not allow the battery to run down completely before charging.
- Charge the battery before storing the vehicle.
- Charge the battery at least once per month, even if the vehicle has not been used.
- Leaving the battery in a discharged condition will ruin it.
- If the vehicle will be stored for more than two months, be sure to disconnect the motor harness from the battery.
- Do not store the battery in temperatures above 75°F or below -10°F.
- **Only use 12 Volt battery specified by manufacturer.**
- Prevent the battery from moving freely inside the battery compartment. Make sure all screws for battery cover are tighten.
- Examine the battery, charger and its connector for excessive wear or damage each time you charge the battery. If damage is detected, do not use the charger or the battery until you have replaced the worn or damaged part.
- Remember to remove an exhausted battery from the vehicle.
- Battery leakage and corrosion can damage the vehicle.

## Disposal























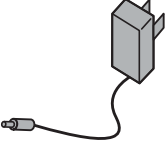

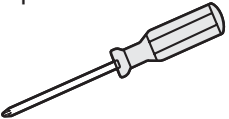
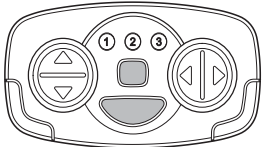
- This ride on contains is a sealed lead-acid battery. It must be recycled or disposed of it in an environmentally sound manner.
- Never dispose your battery in the regular, household trash. The incineration, landfilling or mixing of sealed lead-acid batteries with household trash is prohibited by law in most areas.
- To get a replacement battery, please visit your local retailer or contact at 1-909-643-9359 .
- Always remove exhausted batteries from your toy.
- Dispose of dead batteries properly. Never burn or bury them.
- Do not dispose of a lead-acid battery in a fire. The battery may explode or leak.
- Return exhausted batteries to a federal or state approved lead-acid battery recycler, such as a KID MOTORZ authorized service center, or a local seller of automotive batteries.
- For the service center, please call at 1-909-643-9359. Contact your local waste management officials for other information regarding the environmentally sound collection, recycling and disposal of lead-acid batteries. If you live in the State of Florida or Minnesota, it is prohibited by law for anyone to throw away lead-acid batteries in the municipal waste stream.

(The warranty and customer service contact in this manual only apply in the United States and Canada.)

**TO PROLONG BATTERY LIFE, YOU MUST RECHARGE THE BATTERY AFTER EACH USE. YOU MUST ALSO CHARGE YOUR BATTERY IF IT HAS NOT BEEN USED FOR 30 DAYS OR MORE.**

# Parts List

- Please identify all parts before assembly and save all packaging material until assembly is completed to ensure that no parts are discarded.
- Metal parts have been coated with lubricant to protect them during shipment. Wipe all metal parts with a paper towel to remove any excess lubricant.

|  |  |  |
|--|--|--|
| <p>1. Car body</p>    | <p>8. Seat</p>   | <p>15. Steering wheel screw<br/>(5 × 33PM)</p>                            |
| <p>2. Windshield</p>    | <p>9. Seat backrest</p>    | <p>16. Seat and backrest screw<br/>(4 × 15TAB) (D=7.5) -4PCS</p>          |
| <p>3. Steering Wheel</p>   | <p>10. Spoiler</p>    | <p>17. Steering gearbox screw<br/>(3 × 10PWAB) (D=10) -2PCS</p>           |
| <p>4. Rear-view mirror</p>    | <p>11. Steering tie rod</p>    | <p>18. Rear-view mirror screw<br/>(3 × 12PAB) -4PCS</p>                 |
| <p>5. Hand shank</p>    | <p>12. J-shaped stick</p>    | <p>19. Front axle frame<br/>connecting rod locknut<br/>(5MM) -2PCS</p>  |
| <p>6. Front wheels -2PCS</p>    | <p>13. Rear wheel axle</p>   | <p>20. Steering wheel locknut (5MM)</p>                                 |
| <p>7. Driving wheel<br/>(with rubber wheel<br/>sleeve) -2PCS</p>            | <p>14. Tie rod screw<br/>(5 × 13PM) -2PCS</p>                         | <p>21. Charger</p>    |
| <p>Requires:</p>  <p>2 x 1.5V "AAA" (LR03)<br/>batteries (Not included)</p> | <p>Tool required:</p>  <p>PHILLIPS SCREWDRIVER<br/>(Not included)</p> | <p>22. Remote Control</p>   |



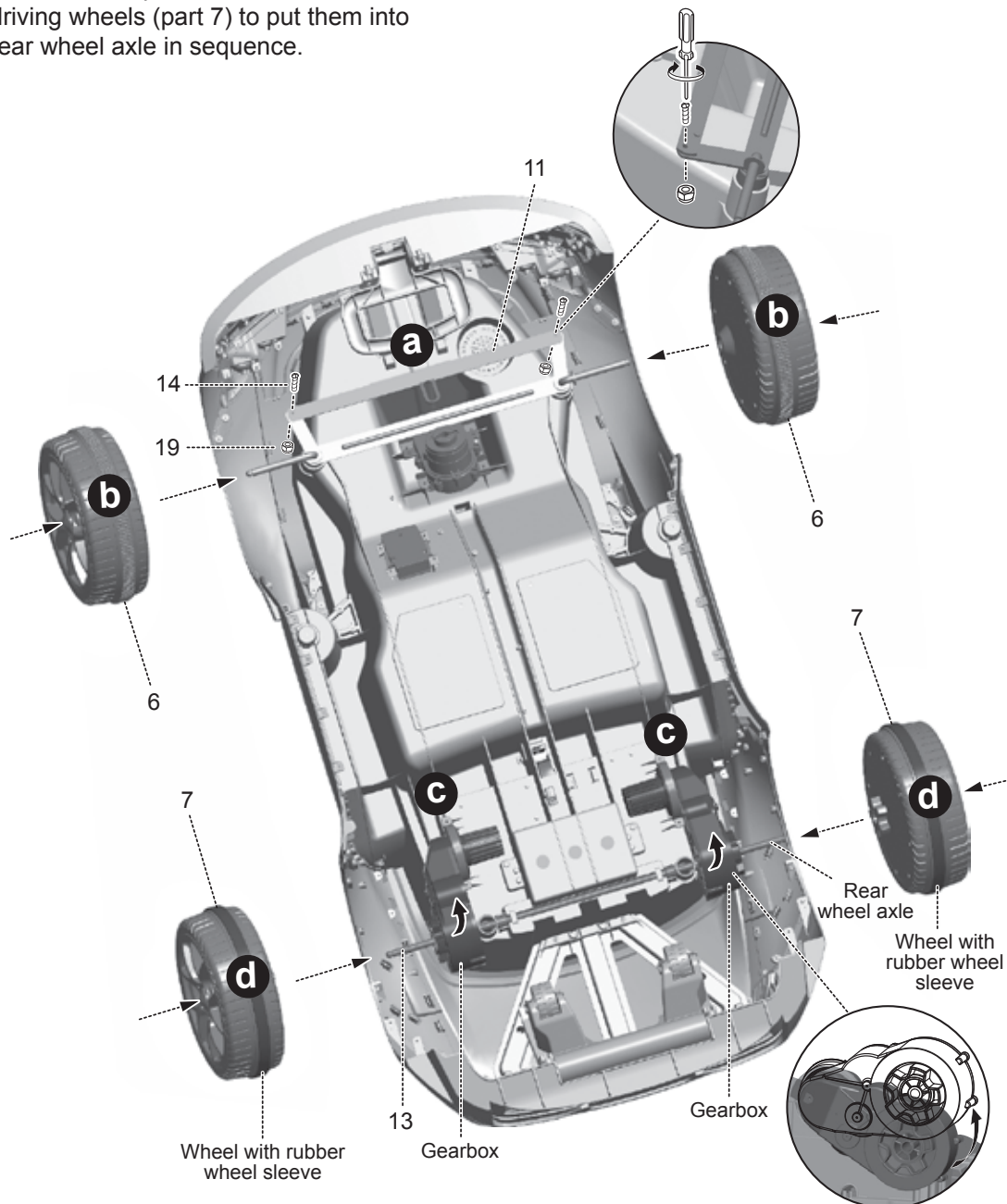
# Assembly



## WARNING

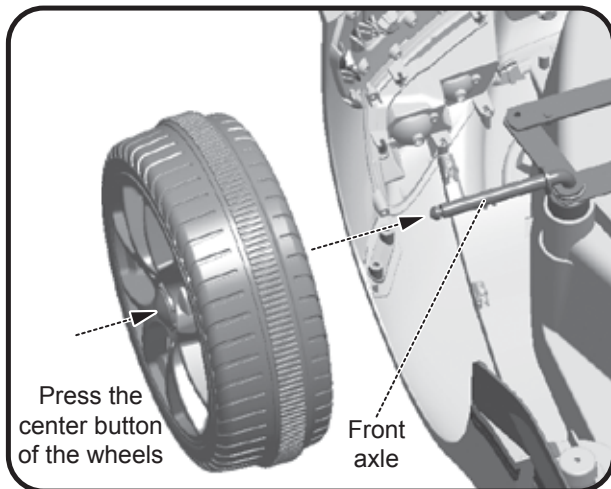
Children can be harmed by small parts, sharp edges and sharp points in the vehicles unassembled state, or by electrical items. Care should be taken in unpacking and assembling the vehicle. Children should not handle parts, including the battery, or help in the assembly of the vehicle.

- a** Install the steering tie rod (part 11) at the assigned location, and then fasten it with the tie rod screw (part 14) and locknut (part 19). (The tightening degree shall be based on the flexible swing direction.)
- b** Use the thumb to press the front wheels (part 6) center button, and then put them into the front axle in sequence.
- c** Rotate the motor gearbox upwards according to the direction indicated by the arrow until the motor gearbox hole aligns with the car body axle hole, and then insert the rear axle (part 13) into the assigned location of the car body.
- d** Use the thumb to press the center button of the driving wheels (part 7) to put them into the rear wheel axle in sequence.



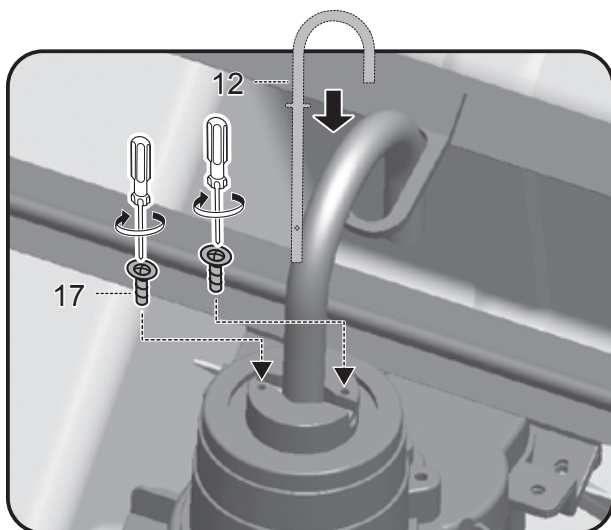
# Assembly

## Installation the front wheels



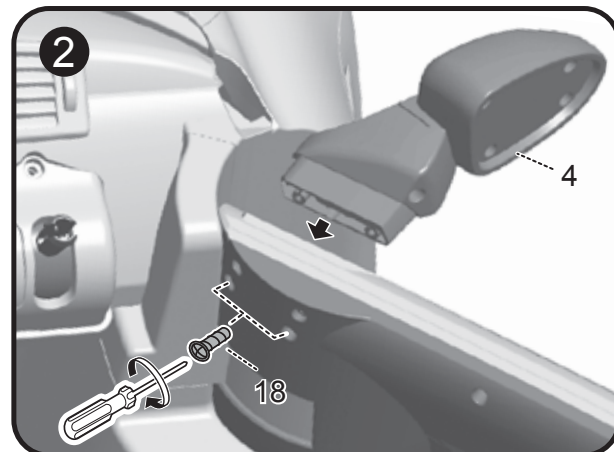
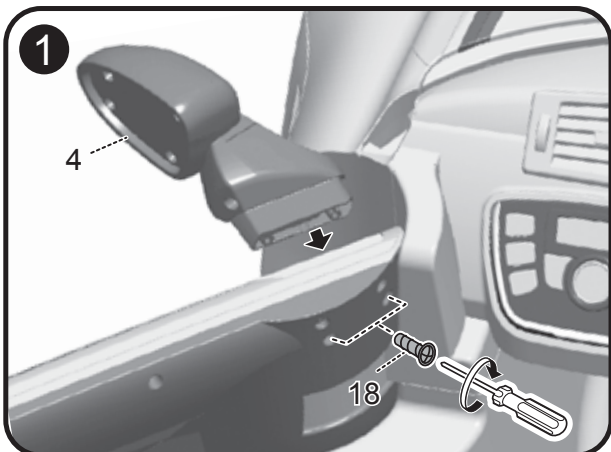
Press the center button of the wheels, insert the wheels into the front axle and fix them; press the center button of the wheels to pull out the wheels from the axle so as to remove the wheels.

## Installation of J-shaped stick



Insert the J-shaped iron hook (part 12) into the designated gearbox at the front of the car. Then tighten with the hole specified by the steering gear box screw (part 17).

## Install the rear-view mirror



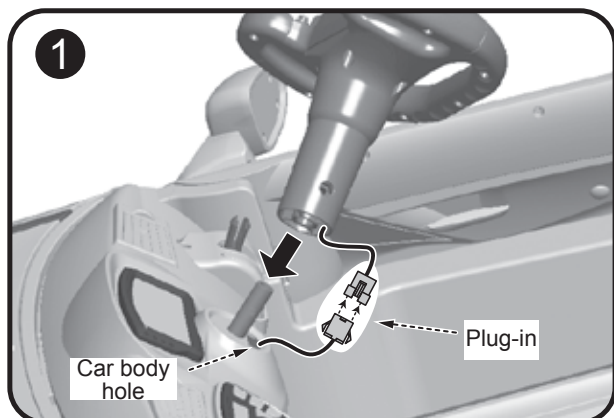
Open the door, install the inverted mirror (part 4) in the specified position, and tighten the inverted mirror with screws (part 18) as shown.

# Assembly

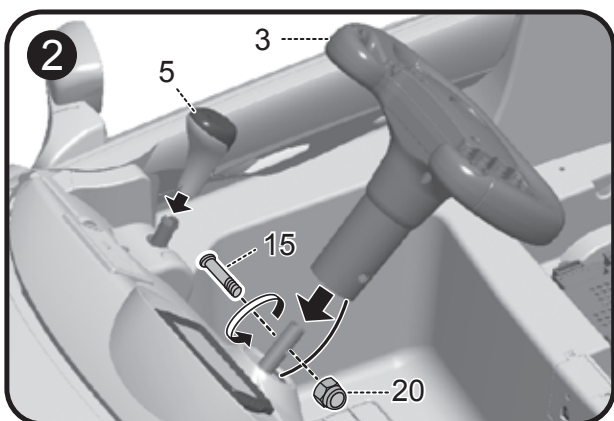
10

Assembly III

## Installation of steering wheel and hand shank

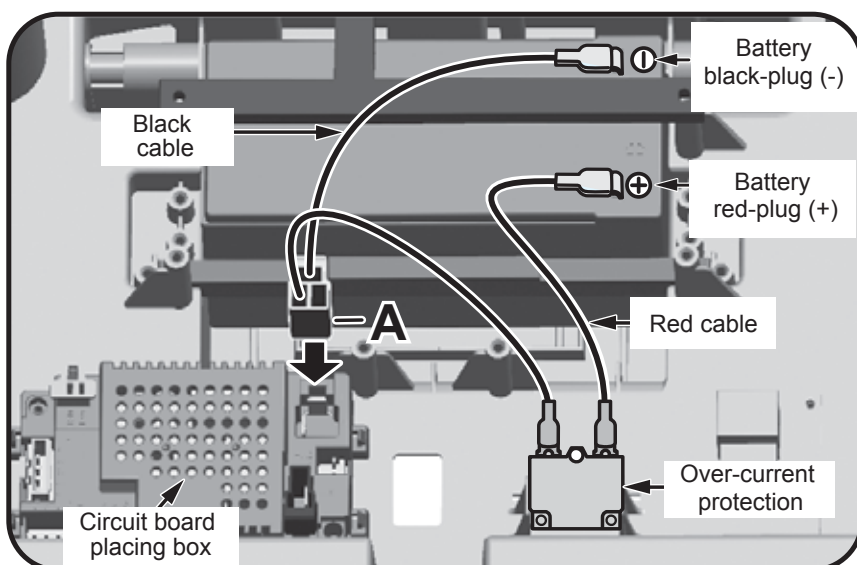


Connect wire plug of the steering wheel into the wire socket from the car body hole correspondingly, and then put the connected plugs and socket into the car body hole.



Install the steering wheel (part 3) on to the straight end of the J-shaped iron hook, and tighten with the steering wheel screw (part 15) and the steering wheel anti-loose nut (part 20); then insert the handle (part 5) into the designated position and press down firmly to make it reliably connected.

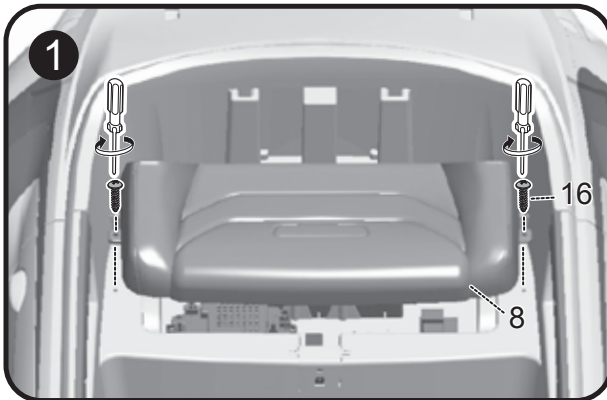
## Installation of power supply



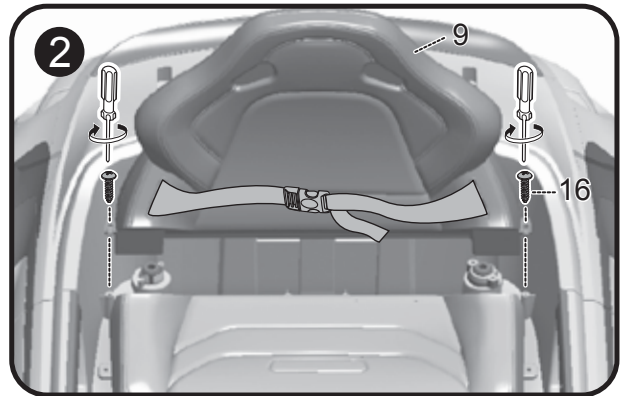
Insert plug (A) into the circuit board to its bottom.

# Assembly

## Install the seat and seat back

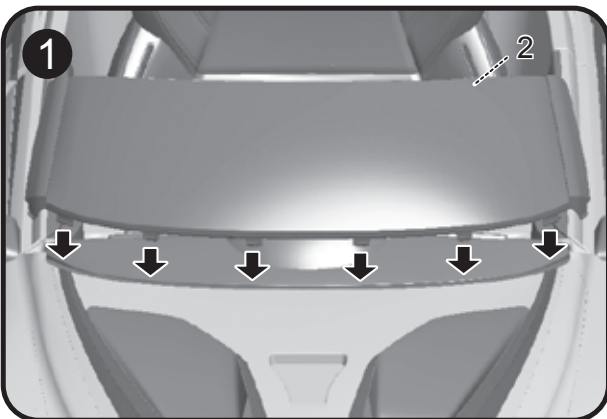


After the power supply is installed, put the seat (part 8) into the assigned location of the car body, and fix it with two screws (part 16).

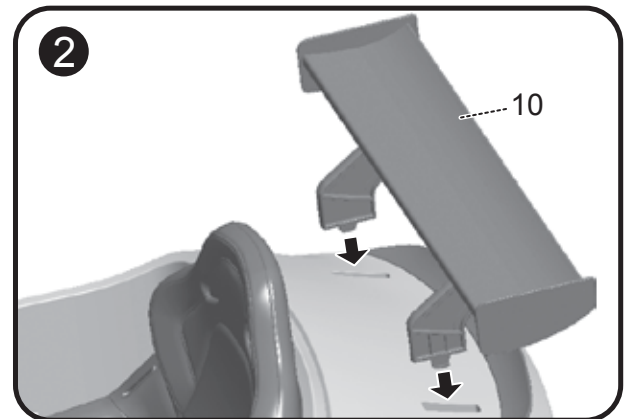


Put the seat backrest (part 9) into the assigned location of the car body as shown in the figure above, and tighten it with two seat backrest screws (part 16).

## Install the windshield and the empennage

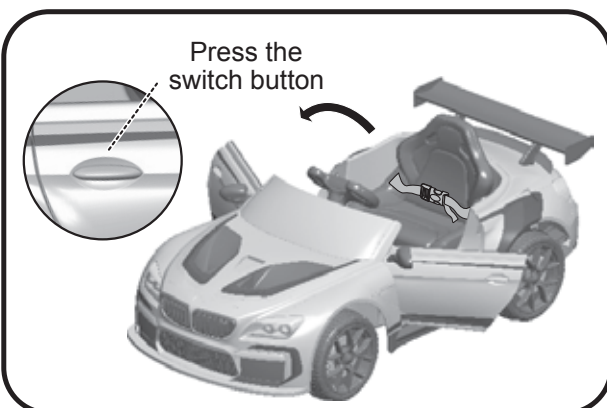


Install the windshield (part 2) to the specified location of the car by fixing the position of each buckle and press until it is firmly fastened.



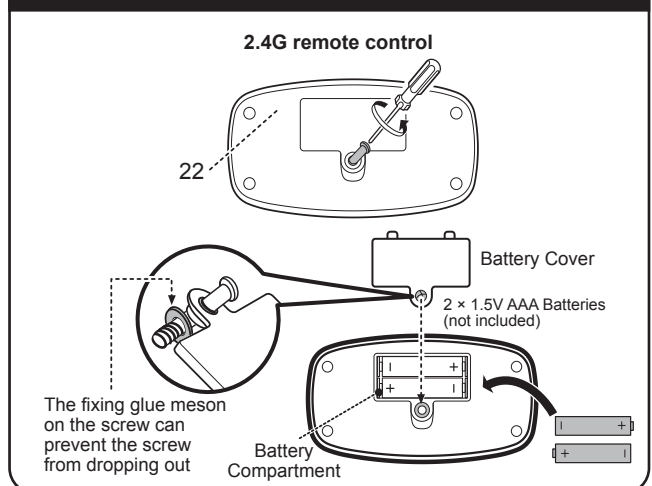
Insert the spoiler (part 10) at the direction shown by the arrow, and press the buckles firmly until it is fasten.

## Open the car door



Press switch button outside the vehicle door sheet, then pull the vehicle door open.

## Installation and replacement of remote control batteries

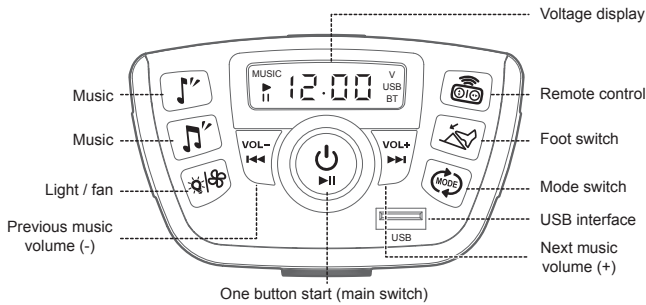


Screw open the battery cover, place two "AAA" batteries into the battery compartment with correct polarity. Place back and fasten the battery door.

# Operating Your Vehicle

## Main functions:

- 1) There are remote controllable and pedal switch buttons.
- 2) Rear drive: Power motor gearbox provides powerful "front or rear" power.
- 3) Forward / backward function: There are three forward speed level, neutral gear and reverse gear on right side of the panel (each gear has its own LED display)
- 4) Foot pedal function: Press the foot pedal button, when the gear shifter is in forward or backward position, step down the foot pedal to move the car forward or backward, and release the foot pedal to stop the car.
- 5) Charging protection function: All functions needing to be powered by the battery will fail when the battery is being charged.
- 6) Forward / backward brake function: It has relay brake function whether it is moving forward or moving backward or parking.
- 7) Turn the auxiliary pull wheel at the bottom of the car out, and turn the pull handle at the front bottom of the car out to pull it away.



### Remote control button:

When this button is pressed, the system will switch to the remote control mode, and the green light will be on, then the remote controller can be used to drive the car. (At this time, stepping on the accelerator pedal is functionless!)



### Foot switch button:

- ① It is by default in the foot switch mode, and the green light of this button will be on; then turn on the gear, and step on the pedal switch to start and loose the pedal switch to slow down the car; press the remote control button to stop the car forcefully. (The car can't be started by foot switch when it is stopped by the remote controller!)
- ② Safety protection function: Before starting the car by stepping on the accelerator or switching from the remote control mode to the footswitch mode, you must first loosen the accelerator pedal and then step on it.



### Mode switch button:

- ① It is by default the built-in music play mode, and there is "music player" English prompt sound, and the display "MUSIC" will be always on;
- ② Press this button and switch to USB mode, and there is "USB mode" English prompt, and "USB" on display will flash (Flash when USB is not connected, and it will be always on when it is connected to USB);
- ③ Press this button again and switch to BT Bluetooth mode, and there is "bluetooth mode" English prompt, "BT" on display will flash (Flash when Bluetooth is not connected, and it will be always on when Bluetooth is connected);
- ④ Press this button again and switch back to the built-in music playback mode.

(It will be as such → Press → USB mode → Press → BT mode → Press → Music mode Loop)

### Display function:

- ① The middle four digits display the voltage of the battery in real time; it will display the volume change in adjusting the volume (U00-U30); which song (0001-9999) in USB music will be displayed during USB playback.
- ② The function icons on both sides of the display are "MUSIC, MP3, V, ▶, II", and the mode or state in which it lies will be displayed by its corresponding icon.

### Bluetooth playback function:

- ① In Bluetooth mode, after connecting Bluetooth, the "BT" on display will be always on, and then the audio file in the Bluetooth device can be played.
- ② When Bluetooth is disconnected, there is a "dingding" prompt tone, and "BT" on display will flash.
- ③ Name of Bluetooth: CHILOKBO



### USB playback function:

In USB mode, after connecting USB, the "USB" on the display will be always on, and then the audio file in USB can be played.



### One-button start button:

- ① Press this button to turn on the main power, and the system is in standby mode, and the trumpet gives a sound of engine. Red light of one button start button and green light of foot switch mode button will be on, displaying "00.00" with "V", and the normal voltage will be displayed after the engine sound; then the English prompt sound of "music player" music is played, and the music button will be invalid until the prompt sound is over.
- ② After pressing this button for 2 seconds, the main power will be cut off and the system will be shut down.



### Music button:

Under MUSIC play mode, press this button to play a song, and the green light of this button is on; press this button again to play the next song; there are 2 music buttons, each button will play 3 songs repeatedly.



### Previous \ Volume- button:

- ① In MUSIC USB BT mode: short press this button, the green light of this button will be on for a short period of time and it will change to the previous music; long press this button for 2 seconds without release, the green light of this button will be on, the volume will be decremented, the volume value on display will decrease from U30 to U00.
- ② Each time of starting, the default volume value will be U25.



### Next music \ Volume+ button:

- ① In MUSIC USB BT mode: short press this button, the green light of this button will be on for a short period of time and it will change to the next music; long press this button for 2 seconds without releasing, the green light of this button will be on; the volume will increase and the volume value on the display will be displayed incrementally from U00 to U30.
- ② Each time of starting, the default volume value will be U25.



### Light / fan button:

The start button is in "off" mode by default, press once to turn on the light, and the green light will be on; press again to turn on the fan, and the light will be off; press the button for the third time to turn on both the light and fan; press the button for the fourth time to turn off both the light and fan, and at the same time, the green light of this button will be off.

(It will be as such → Press → Turn on the light → Press → Turn on the fan (Turn off the light) → Press → Turn on both the light And the fan → Press → Turn off both the light And the fan Loop)

# Operating Your Vehicle

**Steering wheel button:**

The middle is the horn sound button, which will be sounded in any audio playback mode; press and hold this button, the horn will sound continuously

**Sleep function:**

The system will enter sleep mode when it is without driving for 30 min, and the central control board will automatically shut down, and all functions will turn off!

**Low voltage protection function:**

When the voltage is as low as 8V, the central control board will automatically power off and the car will stop automatically. Please charge as soon as possible!

**Charging and power-off function:**

When charging the car, the central control board will automatically power off. All functions will be turned off, and the car cannot be started!

**Normal operation: Foot switch mode**

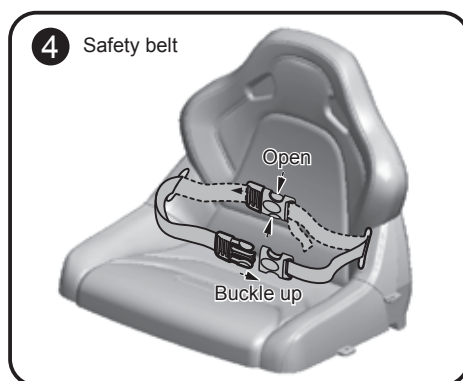
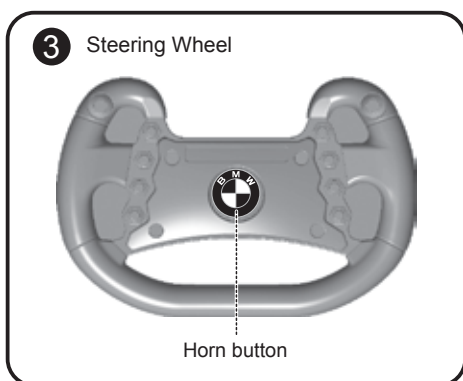
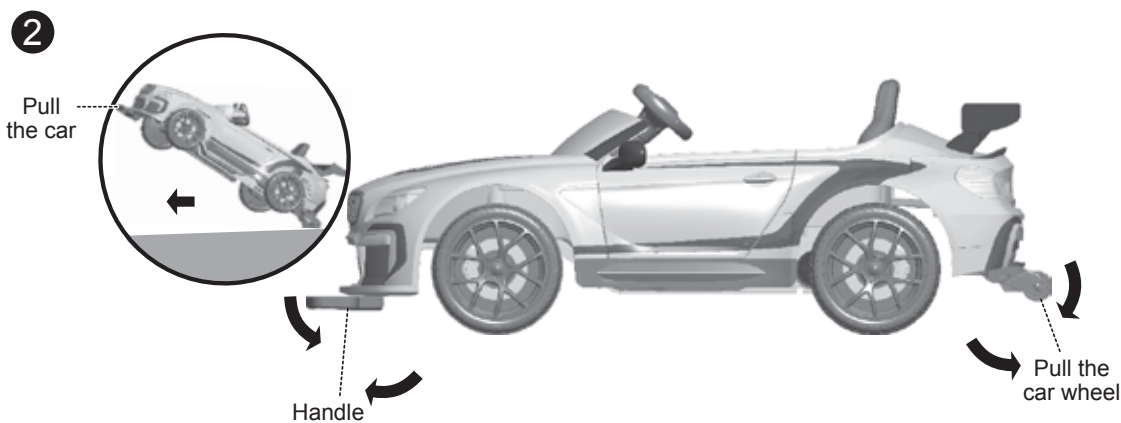
- A. Press the main power switch button
- B. Press the foot pedal button
- C. Select the forward / reverse direction
- D. Select the speed gear
- E. Step on the pedal to start

**Remote control code-matching operation:**

- A. Press the main power switch button to turn it on (Coding will be valid within two minutes after powering on)
- B. Simultaneously keep pressing the speed change button and sudden brake button of the remote control for 5 seconds; if the lamp of first gear, second gear and third gear twinkles, it will indicate that the code-matching action is transmitted; it will indicate that the codes are matched successfully until the lamp is on and stops twinkling; when the code-matching action is received, the front wheel will rotate leftwards for 1s and rightwards for 1s.

**Remote control function:**

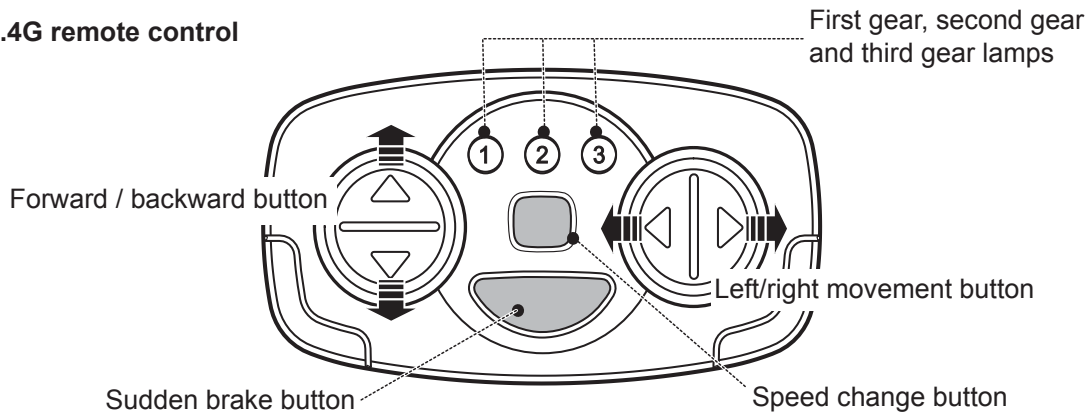
- A. Forward / Backward button
- B. Left/right movement button
- C. Sudden brake button
- D. Speed change button
- E. It will enter the sleep state if no operation occurs within 1 min. You can press any button to reawaken it.



# Operating Your Vehicle

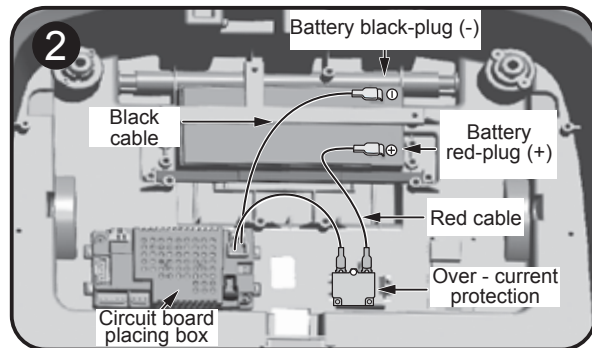
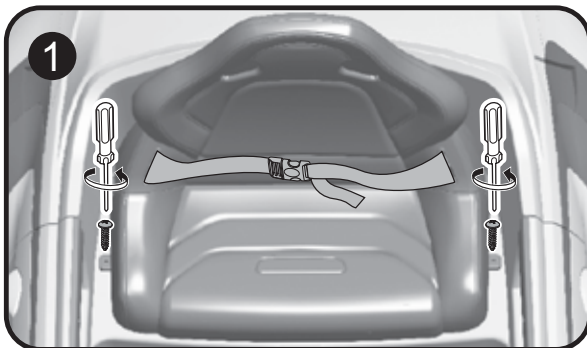
14

## 5 2.4G remote control



### Operation of overcurrent protector

- 1) The overcurrent protector is installed under the seat. You can see it by twisting the seat screw off (As shown in the figure) and taking the seat away.
- 2) When the car is overloaded, the overcurrent protector automatically disconnects the circuit (For protecting the circuit); when the circuit fault is removed, the overcurrent protector automatically connects the circuit.
- 3) When the battery has power and the car can not run, please check whether the circuit of the car has an open circuit or short circuit.



**Warning** Fire danger! The overcurrent protection is only limited to 6A.

## Safety device

**AUTO POWER OFF.** If the motor is overloaded for any reason, including improper usage, an electrical circuit breaker will automatically cut off the power, then resume after the parts have cooled!

## Maintenance

- Clean with a dry, soft cloth only. Do not wash with water or corrosive agents.
- Store vehicle in a dry area when not in use, since moisture could cause the metal components and electrical parts to corrode.
- Remember to charge the battery monthly while the vehicle is not in regular use.
- Check and tighten all screws and coverings regularly.
- Check all plastic parts for cracks. Replace as necessary.

# Troubleshooting

**IMPORTANT!** If you experience a problem with your vehicle, first check the Problems and Solutions Guide below. If you still experience a problem, please contact our Service Center, at **1-909-643-9359** from 9 AM to 5 PM (PST) Monday through Friday. Or email us **customerservice@funcreation.net** or visit us **www.funcreation.net** for assistance and information from our trained technical staff.

| Problem                              | Possible Cause           | Solution   |
|--------------------------------------|--------------------------|--|
| Car does not move                    | Circuit breaker tripped  | Circuit breaker may "trip" and stop the vehicle if it is overloaded or the driving conditions too severe. The breaker will automatically reset after approximately 10 seconds, and the vehicle will operate normally. To avoid repeated automatic shut downs, do not overload the vehicle by exceeding the weight limited of 30kg (66 lbs). Or by towing anything behind the vehicle. Do not drive up hills or run into fixed objects, which can cause the wheels to stop spinning while power is still being supplied to the motors. If breaker continually trips, please contact our Service Center. |
|                                      | Loose wire or connectors | Check all wires and connectors. Make sure that the motor harness connector is plugged in tightly to the battery, and that there are no loose wires around the motor.   |
|                                      | Dead battery             | An old or improperly cared battery may be dead. If you are unsure whether it is dead or not, you can have it tested at our Service Center.   |
|                                      | Undercharged battery     | A new battery should have been charged for at least 12 hours before using the vehicle for the first time. After that, it must be recharge the battery for at least 9-10 hours after each use. Never charge longer than 15 hours. Check all connectors; make sure the charger is plugged into the wall. Make sure the power flow to the outlet is on.   |
|                                      | Charger is not working   | You must have a volt meter in order to tell whether the charger is working or not. If you think there maybe a problem with the charger, take it to the our Service Center where they will test it for you.   |
|                                      | Damaged switch           | When exposed to water or moisture, switches can become corroded, or can jam due to loose dirt, sand or gravel. Please contact our Service Center for diagnosis and repair.   |
|                                      | Code - matching          | If the remote control cannot start the car, please check whether the remote control code-matching function is normally operated.   |
|                                      | Replace batteries        | Check whether the remote control battery power is low.   |
| Car was running but suddenly stopped | Loose wire or connectors | Check all wires and connectors. Make sure that the motor harness connector is plugged into the battery tightly, and that there are no loose wires around the motor.  |
|                                      | Circuit breaker tripped  | Circuit breaker may "trip" and stop the vehicle if it is overloaded or the driving conditions too severe. The breaker will automatically reset after approximately 10 seconds, and the vehicle will operate normally. To avoid repeated automatic shutdowns, do not overload the vehicle by exceeding the weight limited of 30kg (66 lbs), or by towing anything behind the vehicle. Do not drive up hills or run into fixed objects, which can cause the wheels to stop spinning while power is still being supplied to the motors. If breaker continually trips, please contact our Service Center.  |



# Troubleshooting

| Problem   | Possible Cause                            | Solution  |
|---|---|---|
| Short operating time (less than 1 hours per charge) | Undercharged battery                      | A new battery should have been charged for at least 12 hours before using the vehicle for the first time. After that, it must be recharged the battery for at least 9-10 hours after each use. Never charge longer than 15 hours. Check all connectors; make sure the charger is plugged into the wall. Make sure the power flow to the outlet is on. |
|   | Overcharged battery                       | Never charge battery longer than 15 hours. If you think the battery maybe damage due to overcharging, contact our Service Center for testing.   |
|   | Old battery will not accept a full charge | Even with proper care, a rechargeable battery does not last forever. Average battery life is 1 to 3 years depending on vehicle use and use conditions. Replace the battery with a new KID MOTORZ 6 volt rechargeable battery. Do not substitute parts. Please contact our Service Center to get a replacement battery.                                |
| Vehicle is sluggish                                 | Undercharged battery                      | A new battery should have been charged for at least 12 hours before using the vehicle for the first time. After that, it must be recharge the battery for at least 9-10 hours after each use. Never charge longer than 15 hours. Check all connectors; make sure the charger is plugged into the wall. Make sure the power flow to the outlet is on.  |
|   | Battery needs charging                    | Be sure to charge the battery after each use.   |
|   | Old battery will not accept a full charge | Even with proper care, a rechargeable battery does not last forever. Average battery life is 1 to 3 years depending on vehicle use and use conditions. Replace the battery with a new KID MOTORZ 12 volt rechargeable battery. Do not substitute parts. Please contact our Service Center to get a replacement battery.                               |
|   | Vehicle is overloaded                     | Only one rider at a time, follow the 30kg (66 lbs) weight capacity and don't tow anything behind the vehicle.   |
|   | Driving conditions are too stressful      | Use only on a generally level ground.   |
| Music sound is distorted or silent                  | Undercharged battery                      | Check whether the battery power is enough, and charge or replace the battery if not.  |

# Troubleshooting

17

Troubleshooting III

| Problem   | Possible Cause  | Solution   |
|---|---|--|
| Intermittent vehicle operation  | Loose wire or connector                                       | Check all wires around the motors and all connectors to make sure they are tight.  |
|   | Motor or electrical switch damage                             | Contact our Service Center for diagnosis and repair.   |
| When the accelerator is pressed, the vehicle won't run without a push | Loose wire or connector                                       | Check all wires around the motors and all connectors to make sure they are tight.  |
|   | "Dead Spot" on motor  | Contact our Service Center for diagnosis and repair.   |
| Motor gear box makes a loud grinding or clacking noise                | Broken gears  | Contact our Service Center for diagnosis and repair.   |
| Charger get warm during use   | This is normal and should not be concern.                     | No action required.  |
| Battery makes gurgling or sizzling noise while charging               | Some noise and swelling is normal and should not be a concern | No action required. If the battery does not make noise while charging. It does not mean it isn't accepting the charging. |

If, after reviewing the Problems and Solutions Guide, the vehicle still fails to operate, please contact our Service Center at 1-909-643-9359

Note! For faster service when calling Consumer Relations, completely charge the battery before calling and have the following available by the phone:  
Vehicle.

Vehicle model number.

Vehicle production run number.

(The warranty and customer service contact in this manual only apply in the United States and Canada.)

# BMW M6 GT3

Battery Operated Ride On

**STOP!**

**DO NOT RETURN TO STORE**  
**WE ARE HERE TO HELP**

This product cannot be returned for a refund after it has been unpacked and used.

Call us **1-909-643-9359** or

fax us **1-909-869-5945** or

email us [customerservice@funcreation.net](mailto:customerservice@funcreation.net)

for assistance and information  
from our trained technical staff.