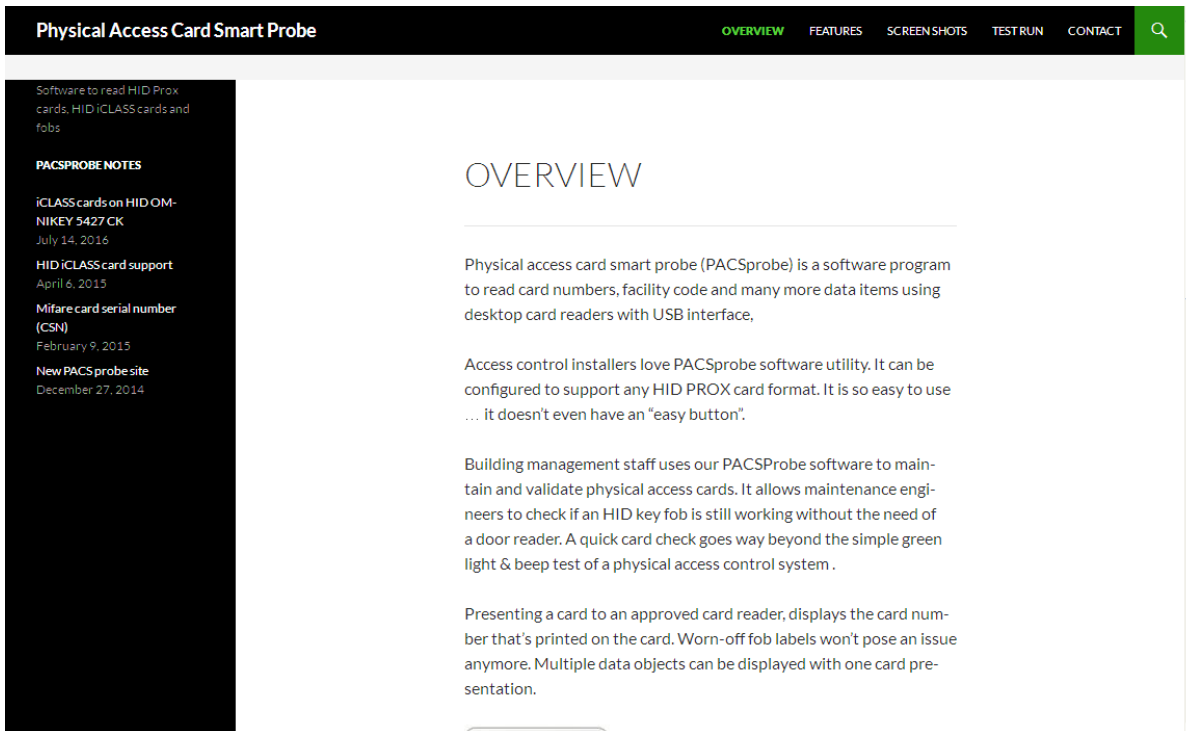
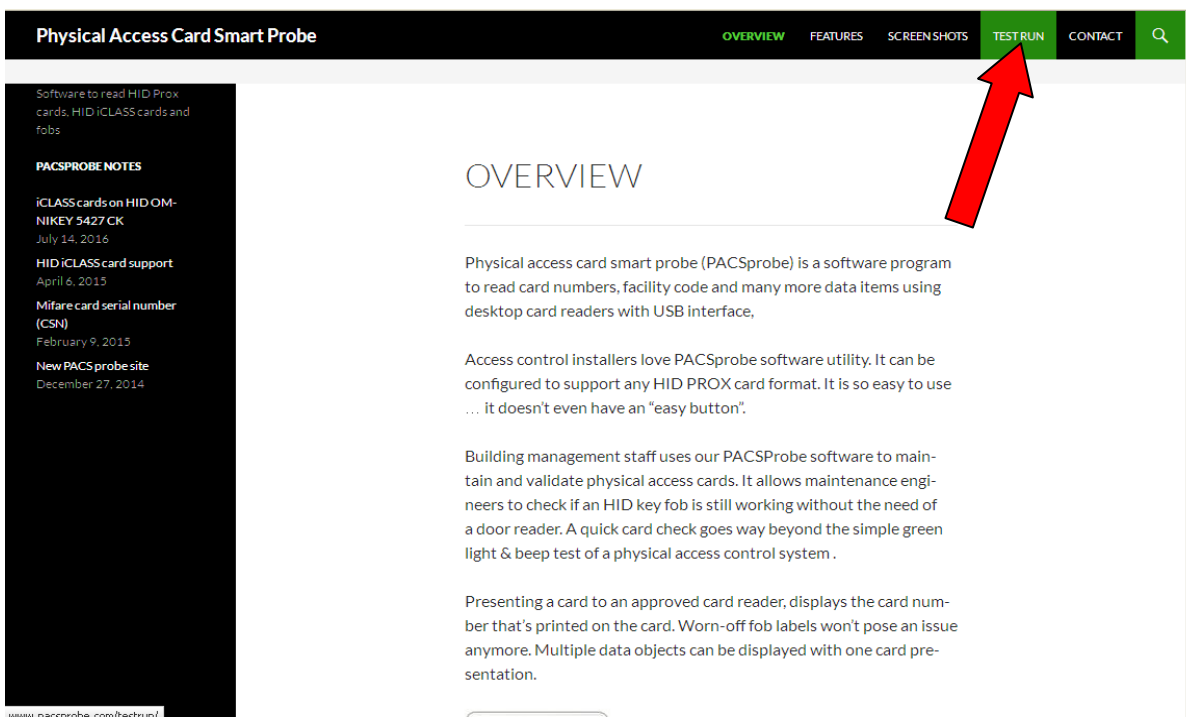


# How to use PACSProbe

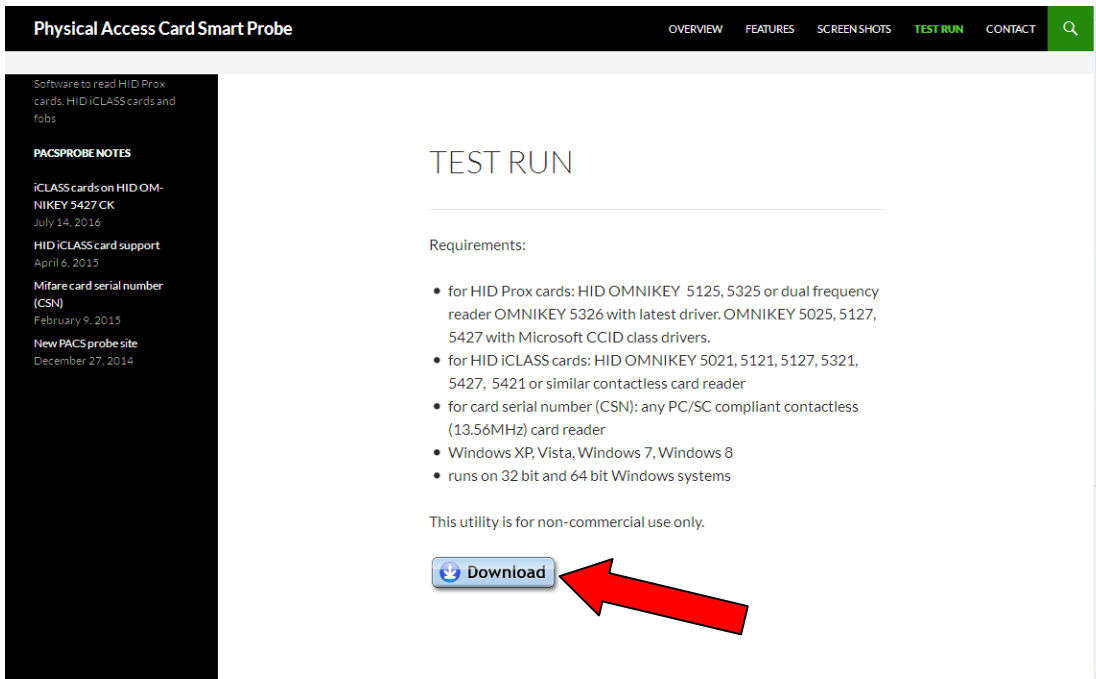
1. Open PACSProbe homepage at [www.PACSProbe.com](http://www.PACSProbe.com)



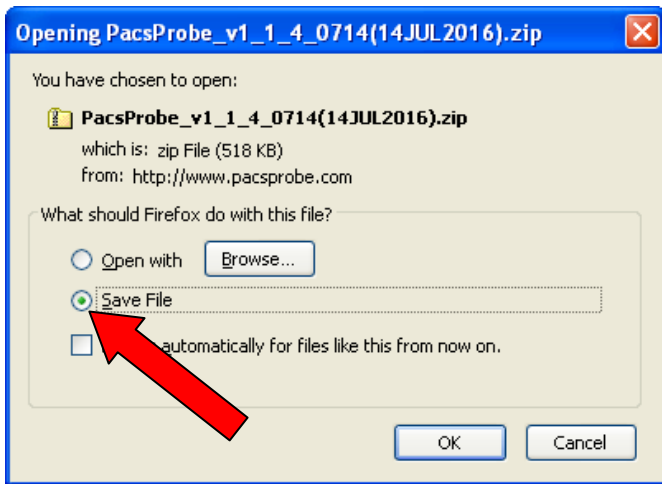
2. Click on the Test Run link on the top menu bar



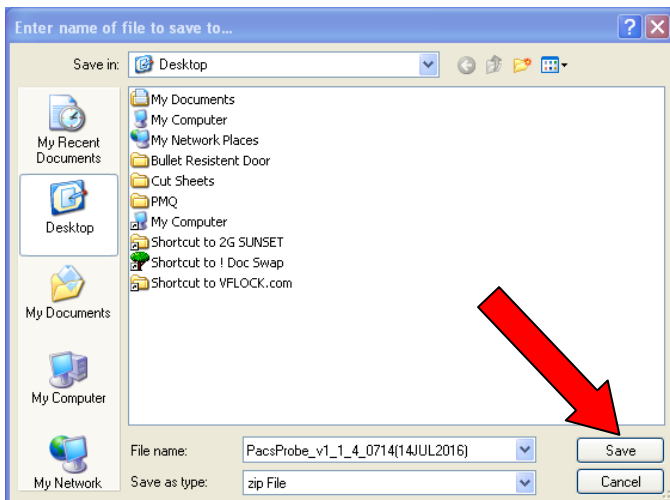
3. Click on the Download button



4. Click on Save File



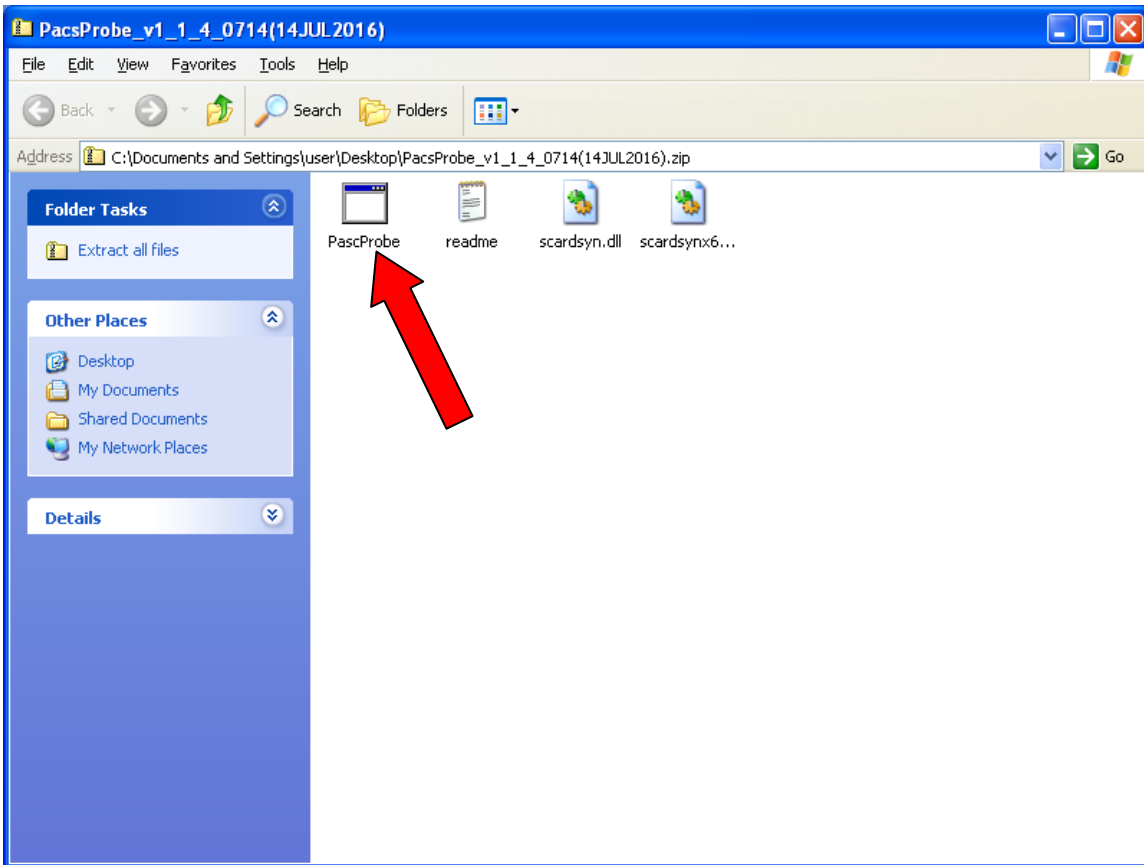
5. Save file to your computer.



6. Open saved file folder from the location that it was saved to by double clicking on it



7. Open PacsProbe .exe file



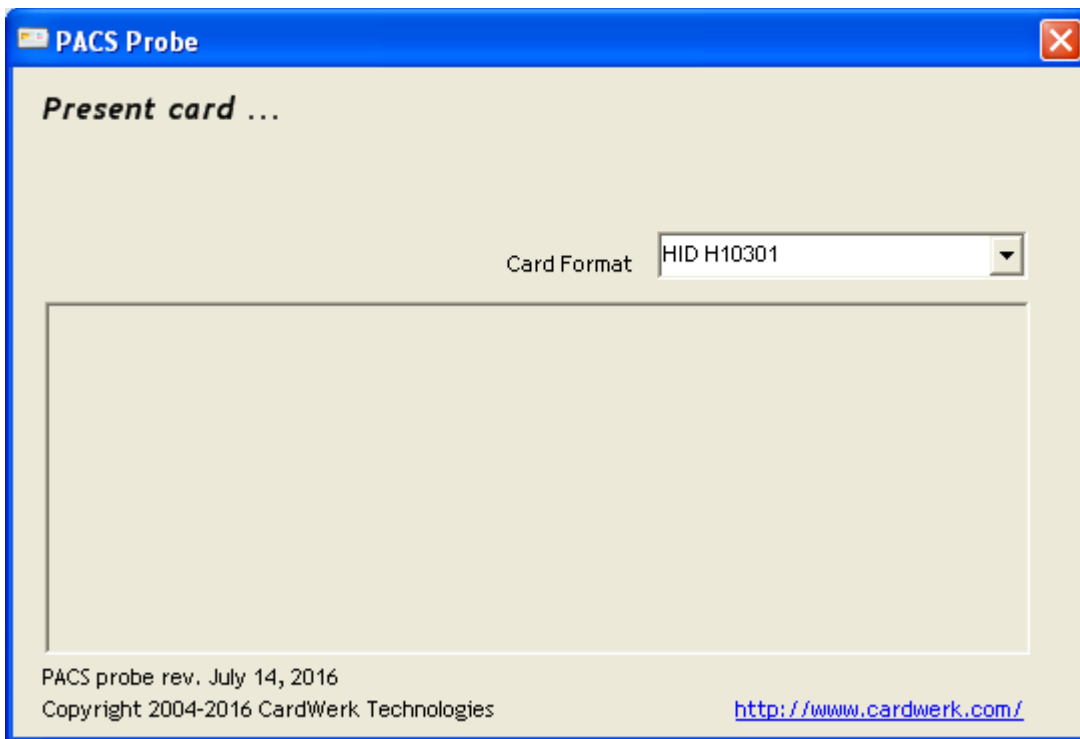
8. Click on run



9. Click on run

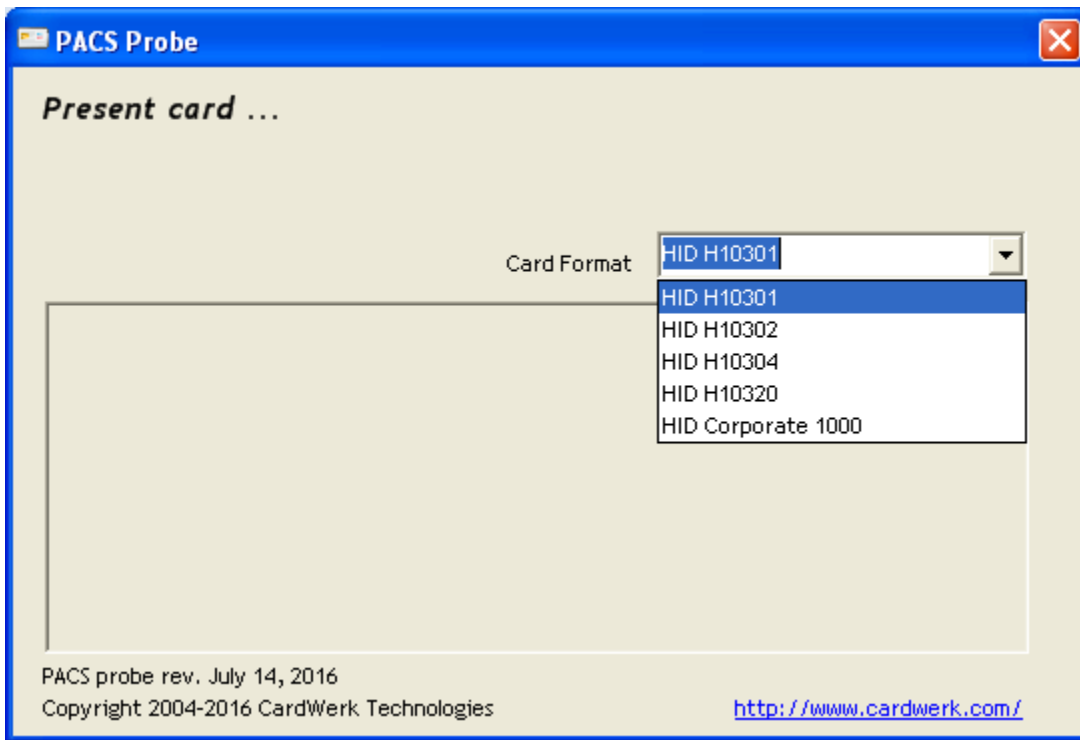


10. The program is no open



11. Chose Card Format.

a. Note: HID H10301 is most common.



12. Present card on reader

