

BEDROCK TREE FARM

FIR NEEDLE

PRODUCTS



WHOLESALE CATALOG

Published in RI Local Magazine—December 2013

Bedrock Tree Farm

The Scent of the Season

by Dale Rappaneau Jr.

Back in 1996, after the North Cape oil spill, Tom and Angie Geary, the husband & wife duo behind Wakefield's Bedrock Farm, planted Christmas trees across 12 acres. Tom, a full-time lobsterman, thought the trees would help supplement the family's income: "For my first 10 years, lobstering had been great. It was a really healthy, rewarding way to make a living, but since 1996, inshore lobstering has dramatically changed for the worse." So the trees became Tom's next project.

The initial costs for opening the tree farm were excessive, to say the least. "It's all cash out of pocket," Tom said. "You don't go to a bank and say, 'I want to plant Christmas trees.'" More challenging still was the work, which required Tom to clear the land, plant the trees, care for them, shape them and then replant them, each consecutive year. "It's basically a full-time job with part-time pay."

All that work eventually caught up with Tom, who some years ago took a break from replanting Christmas trees. This lapse of not replanting trees for a few years led to their current limited supply of trees over 6-feet tall. On top of that, "Sandy hit in the late fall of last year, giving us a really heavy dose of salty air and a major hard winter and a wet spring," Tom said, which "combined with, right now, what I consider to be extreme drought. It kind of gave us a good kick in the [rear]." According to Tom, though, this is the last year in which Bedrock Farm has to "downplay" their Christmas trees, as that lapse ends after this coming winter season.

For other tree farms, this kind of gap in ability to produce trees would be devastating, but for Bedrock Farm, their award-winning fir needle candles keep the customers coming back.

"People used to call us up and say their tree lost its scent. Some trees have a lot of scent and some don't, it's the nature of the tree. So I told them to scratch the branches or knick the bark. Get the sap flowing, that's where the scent comes from. Finally, I told people, just buy a scented fir needle candle."



At first, Tom and Angie sold traditional Christmas tree candles made by other companies. The candles, Tom said, were okay, but nothing really extravagant or special, so they started thinking about alternatives.

"I'd come in from shearing and my arms would be covered in sap," he said. "I'd scrape my arms and get this ball of sap that smelled incredible, so we started experimenting using the actual sap in candles." After months of trying different things, Angie - "the key imagination involved," Tom said - came up with a process in which fir needles were ground to powder and then infused into a candle. "That's the most authentic thing we came up with," he said.

And most authentic it certainly is: Angie and Tom's fir needle candle won first place in the Best New Product category at the New England Made show. Now, it's sold in more than 275 stores across the New England region - "and it's growing daily," Tom said. "It was totally unexpected and a huge surprise." More importantly, the candle has become "the forefront of our business operations," he said, adding that the award "just started busting the doors down for us."

Bedrock Farm's candles also include a wooden wick - something that Tom considers note-worthy in itself - and they have included the same award-winning fir needle process in other products, such as soaps.

Individuals interested in purchasing one of these amazing candles, or learning more about the creative individuals behind them, should visit BedrockTreeFarm.com.

HOW IT ALL STARTED...



Bedrock Tree Farm fir needle products were developed because of our desire to find a use for the endless fir needle branches that are sheared to the ground and left to turn to mulch. We felt such incredibly healthy, succulent needles must be recycled and used for our benefit and enjoyment year round.

BINGO! Soaps, Candles, Salt Scrub and more.

***Relaxing Aromatherapy
Candles***

DOUGLAS FIR
with new spring growth.



The Douglas Fir Needles lend the grapefruit scent to the mix while the Canaan Fir Needles have a potent tangerine scent.



CANAAN FIR (Balsam/Fraser Hybrid)

CONCOLOR FIR (White Fir)



The scent of the Concolor Fir needles is a very potent lemongrass scent and the Fraser Fir Needles add the apple note.



FRASER FIR

We harvest the clippings, dry, grind and blend them into all of our products for that amazing natural true scent.

BEDROCK TREE FARM

FIR NEEDLE PRODUCTS

All of our candle products are made at our farm with all natural soy wax made in the USA. Soy wax is completely natural, clean burning and non-toxic, made from renewable resources which helps American farmers. All candles contain fir needles freshly harvested at our Christmas Tree Farm along with our fir needle powder, essential oils, and a naturally derived fragrance combination we created here at Bedrock Tree Farm. The added color we use does not contain hazardous solvents or additives such as naphtha or naphthalene and fragrances do not contain harmful phthalates or paraffin wax. The soy wax we use has no genetically modified markers present according to the manufacturers product data specification sheet.



"THE" HOLIDAY CANDLE!

Our authentic pine/balsam/fir needle scent is like no other candle on the market. Pictured above with no color added, "Natural".



Here at Bedrock Tree Farm our candles are individually handcrafted using freshly harvested fir needles, dried fir needle powder, and premium fir needle essential and naturally derived fragrance oils to enhance the incredible aroma of a fresh sheared branch that is enjoyable year round.

The needles floating on the top give an entertainment value to watching the candle burn.



We received the Best New Product award at the New England Made Giftware and Specialty Food Show held at the Sturbridge Host Conference Center in Sturbridge, MA in the Fall of 2013. All vendor entries were voted on by the hundreds of attending buyers.



Display pictured is an example of a great starter package.

3-Tier Counter Display with signage (Free product to offset cost)

3 - LSJ21—21 oz.

3 - LSJ12—12 oz.

3 - LSJ8—8 oz.

3 - LSJ275—2.75 oz.

*VotiveMix 2 oz. ea. and
MiniMix 1.25 oz. each*



Available in Holiday, Natural, and Summer.

*Please contact us for more information about all of
our display options and promos.*

LIBBEY STATUS JARS

*All Libbey Status Jars have
WOODEN WICKS*



When you light our wooden wick, always use a lighter and hold the flame at the base of the wick to get the wax started melting around the wood. Do not light your candle for the first time unless you will be able to leave it lit long enough to get a pool of melted wax across the surface of the entire candle as shown above (approx. 1 hour). You should achieve this with every burn for best results and to avoid tunneling (common waste of wax).

Before the next lighting gently scrape the top ridge of the wick with a wick dipper or non-flammable tool to remove the charred wood. In some cases if the flame isn't vigorous enough for you, remove a small amount of wax to allow more wood to be exposed and you will get that bigger flame.

We do not label around the column of the jar so that you can enjoy watching the wood flame. After each burn, you can wrap a damp paper towel around a tool and wipe the inside of the jar clean for a clear view of the next burn.

TUREEN JARS

All Tureen Jar Candles have lead-free, cotton braid with paper core wicks.



*10 and 20 oz. tureens are triple-wicked.
3.5 and 6 oz. tureens are double-wicked.*



For best results always trim cotton wicks to 1/8" and burn long enough to create a 1/4" deep melt pool all the way across the top of the candle.

MASON JARS



All mason jars have a single cotton wick.



The Mini Mason Jars are shipped in crushproof shipping/display boxes.

Fold the lid flap and tuck in to back for nice display. Order in multiples of 12 (you can mix colors and scents)



This little 1.25 oz. jar has a big burn time. Every test result is 10 hours or longer.

CANDLE TINS



*2 oz. and 4 oz. tins are single cotton-wicked
8 oz. tins are double-wicked.
16 oz. tins are triple-wicked.*

4, 8, and 16 oz. tins have see-through plastic metal slip-on lids.



*Metal cover 2 oz. Candle Tins are shipped in
crushproof shipping/display boxes.
Order in multiples of 12.
Mix and match colors and scents.*

GALVANIZED PAILS

*Both 12 oz. and 3 oz. pails have wooden wicks.
We place a clear dust cover on top and a warning to
remove it before lighting on the back.*



These pails will not rust even if left outdoors for years.



*We make every effort to assure that the pails don't leak,
however, it is wise to burn on a surface that is safe to
assure no damage in case it does.*



©2009

Cardinal in an ice storm.



©2013

Owl in a blizzard



Human Tree-shaking machine.

VASE CANDLE



Our newest item.

32 oz. Net Wt.

Approx.

5" tall x 5" diameter.

Clear dust cover.

Comes gift boxed for
secure shipping.

(See price page for picture)

At this time this 2 lb. net
weight 100% soy wax
candle with our
wooden wick is
Only available in
FIR NEEDLE NATURAL
BEACH ROSE
and
WHITE LAVENDER



This candle tested to
have a 165-200 hour
burn time.

It makes a beautiful
centerpiece in any
environment.

LIBBEY TUMBLER



We added this glass tumbler to our line as a simple, economical option. It has a single cotton wick.

Tumbler measures 4" height x 2 3/4" top x 2 1/2" bottom.

It holds approx. 7 oz. of soy wax and average burn time is 38-42 hours.

The sturdy molded plastic see-through cover snaps down inside the jar with the label placed on top.



100% SOY WAX VOTIVES

Votives are hand poured in frosted votive glasses with a cotton wick. Each votive has a labeled clear dust cover. Approx. burn time 15 hours.



Votives and Melts are shipped in crushproof 12-pack shipping/display boxes. Fold the lid flap and tuck in to back for nice POP display with signage.

*Mix and match any scents
Order in multiples of 12 only.*

CUBE MELTS

(6 cubes -Net Wt. 3.5oz Total)



Cube Melts are sold in 12-count pack minimum in the FIR NEEDLE NATURAL option only.

AT-A-GLANCE

Initials represent style and number represents liquid ounces per candle.

LIBBEY STATUS JARS—LSJ



MASON JARS—MJ

LIBBEY TUMBLER-LT



TUREEN JARS—TJ



All scents are available in all containers.

POURED VOTIVES IN GLASS—VH

Clear dust cover



MJ125

MINI
MASON

CANDLE TINS—CT

With clear window tops.



Purchase Votives, Mini
Masons, CT2, and P3
candles in sets of 12
shipped in display box
with signage.

You can mix and match
scents and colors to
total 12.

GALVANIZED PAILS—P



Product colors may vary slightly from printed pages throughout.

Pricing listed is per candle.

VASE CANDLE—V



Our vase candle comes packaged securely in a nice, crushproof gift box with a wick dipper and candle burning instructions.

Order in single counts.



Many happy memories are made during our choose and cut Christmas season.



Meanwhile this young fox family is keeping things fun at Bedrock Tree Farm.





Bluebirds flock the back Fraser field on a warm summer day.



To offset seasonal demand we created candles that expand options for year-round sales. All Bedrock Candles are made with fir needles, fir needle powder, naturally derived fragrance, and essential oils. We are going one step further and adding new elements to create refreshingly unique, fragrant candles.



BEACH ROSE/FIR NEEDLE

If you have ever hiked down through the evergreens to the beach, you know exactly what this candle smells like. We were inspired by a woman in Maine who when a small girl walked to the water's edge through the fir trees. As she walked, she snipped little fir branches and put them in her pockets and then plucked little wild beach rose petals and put them in her pockets as well. She took them home and put them in her dresser drawers to capture that wonderful combination of smells. When she first smelled our fir needle candle, she told us this story and thanked us for bringing back her wonderful childhood memories.



SHISO/FIR NEEDLE

Shiso is an edible herb that is described by many to have a cilantro, citrusy, tinge of ginger, and basil flavor...a taste of summer with a pleasantly assertive bite! Combining Shiso leaves with our fir needle powder and oils brings a pungent, fresh spring/summer fragrance to our candle product line.



LAVENDER/FIR NEEDLE

Everybody loves Lavender. Our combination of Lavender Essential oils with our Fir Needle Soy Base is perfect for those who just read “everybody loves lavender” and said, “no, they don’t.”

Ours is a unique and pleasantly surprising scent. The sprinkling of lavender buds and fir needles is especially pretty.



LEMONGRASS/FIR NEEDLE

Lemongrass scent is interestingly calming and refreshing at the same time. Blended with the fir needle it makes for a great outdoor patio candle.



JUNIPER/FIR NEEDLE

If you have ever walked by a juniper tree when the berries are ripe, you know what this candle smells like. They grow wild all over the Christmas tree farm so what choice did we have but to combine this early summer scent with the holiday best for a perfect fit.



All fragrances are available in all containers.



BAYBERRY/FIR NEEDLE

The bayberry bush is best known for its berries, from which a wax is derived to make fragrant bayberry candles.

We have accented our fir needle soy wax base with bayberry wax and bayberries combined to make a wonderfully fragrant candle to be enjoyed anytime of year.



As the story goes, a gift of a bayberry candle is an invitation to participate in the holiday ritual of lighting a bayberry candle and reciting the legendary poem which is included on the hang tag:

*"This bayberry candle comes from a friend
so on Christmas Eve burn it down to the end.*

*For a bayberry candle burned to the socket,
will bring joy to the heart and gold to the pocket."*



DISPLAY RACKS

Solid Wood Maine Made *(Free drop-shipment with signage on all racks)*



Counter Display

Dimensions 12" x 14" x 8.5"
(shelves 4.5" x 12")

Free-Standing 5-tier Floor Rack

Dimensions 13" x 12" x 49"

Bottom tier is not attached permanently and extends out at the bottom an additional 3 inches.

Free product offered to offset rack cost.



DISPLAY BOXES

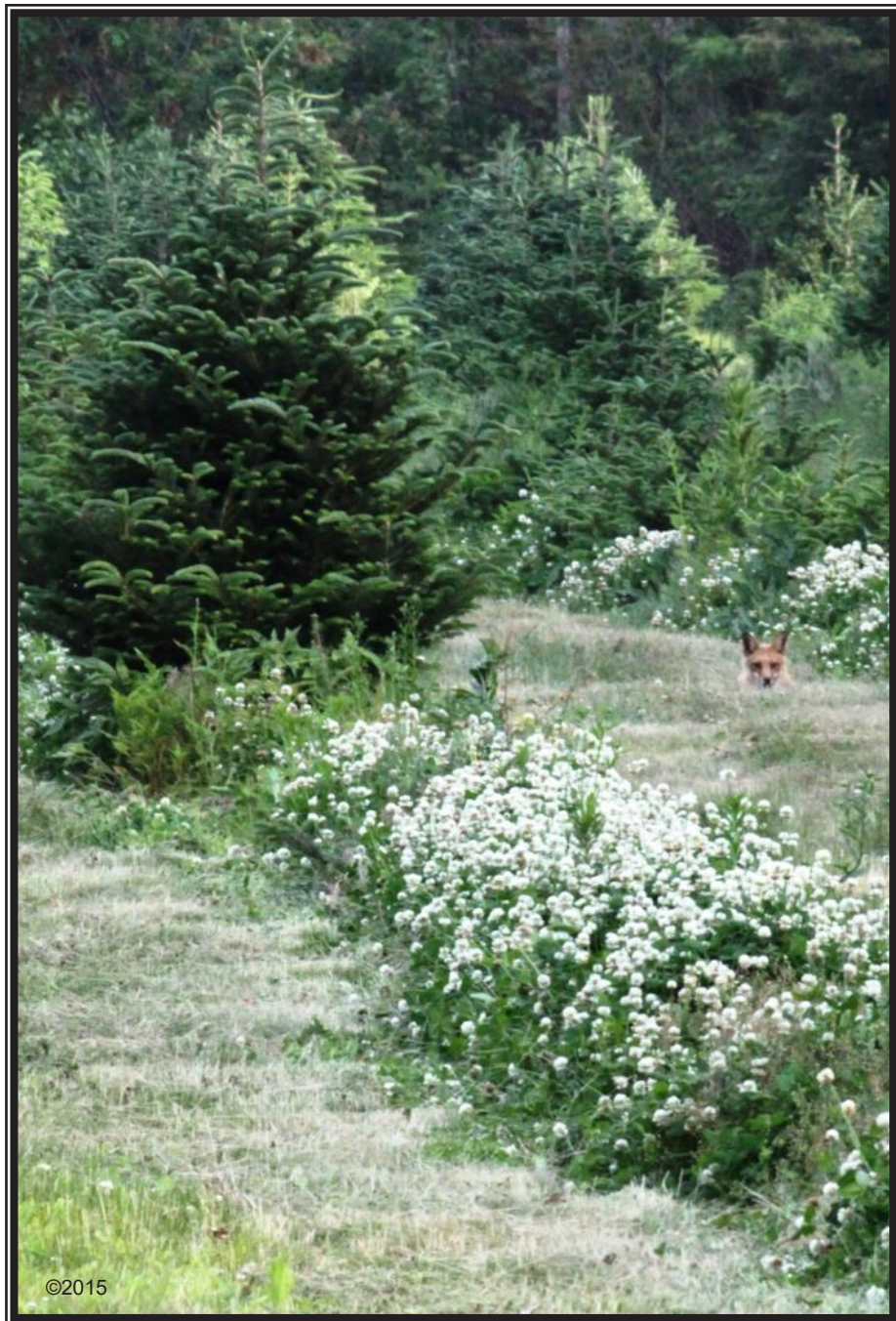
There is no extra charge for these display boxes. These are shipping boxes that double as POP Displays.



MINI MASON JARS MJ125

CANDLE TINS CT2

VOTIVES VH



©2015

We strive to be a “good bee” pollinator friendly farm by planting acres of white clover among our trees.

(No, none of the foxes in this catalog are photo shopped in or retouched.)



©2015



FIR NEEDLE BODY PRODUCTS

We use fresh **fir needles** and dried **fir needle** powder, **fir needle** essential oil and naturally derived fragrance oils in all of our natural bases.

Our soaps are filled with fir needle powder on one side for an exfoliating scrub and fir needle essential oils on the other for a smooth, sudsy, cleansing wash.

A warm shower becomes a wonderful, aromatic experience.



Our shampoo, body wash, and lotions all contain gentle amounts of fir needle powder and oils for a refreshing feel with no lingering powerful fragrance smell.

The Sea Salt Scrub is loaded with ground, fresh fir needles and essential oil and can be used all over the kitchen to get rid of odors loofah your hands and feet.

SEA SALT SCRUB

Our first product created out of the need to rid our hands of the smell of lobster. Tom is a 30+year career lobsterman and part time tree farmer. Long story short—we found that the fir needles combined with salt and coconut oil completely rids our hands of that fishy smell and is a must have for getting the sticky fir needle sap off our hands after a clipping marathon.



Our salt scrub is made here at our farm with pure sea salt and coconut oil with added fir needle essential oil and fresh fir needles.

Most common uses are to rid hands of odors, especially after handling fish, garlic, eating wings or sticky foods. We also use it on cutting boards and sink drains.

Customers tell us they also use our scrub as a loofah rub to smooth and cleanse skin, especially feet. They comment that the oils leave your skin feeling moisturized and clean.

LIQUID HAND SOAP

SCRUB DISPLAY

12—6 oz. Sea Salt
Kitchen Scrubs

with signage and
tester (not shown).

You pay for 9 and
receive 3 free to offset
rack cost.

6 oz Plastic Jar



Display with
signage, tester, and
free offset product.

SALT FOR THE BATH

Made with Premium 100%
Dead Sea Salt and fresh
cut fir needles.

Fill the tub, sit back, and
indulge in the aroma that
brings you back down to
earth.

Single use window tin—2 oz.



Made with natural saponified oils. Very sudsy.

8 oz. Green Plastic Bottle with Pump dispenser

BODY CARE PRODUCTS

BODY BUTTER With Shea Nut and Cocoa Butter

Deionized Water, Theobroma Cacao (Cocoa) Seed Butter, Butyrospermum Parkii (Shea Butter), Abies Balsamea (Fir) Oil, Abies Balsamea (Fir) Powder, Fragrance, Emulsifying Wax NF, Stearic Acid, Caprylic/Capric Triglyceride, Vitis Vinifera (Grape Seed) Oil, Glyceryl Stearate, Camellia Sinensis (Japanese Green Tea) Leaf Extract, Tocopherol (Vitamin E), Allantoin, Phenoxyethanol and Caprylyl Glycol (Optiphen®), Mineral Oxide color.

CBB4 - 4 oz. CBB8 - 8 oz

CBB1 set of 18 1 oz. size with tester in display only

SHAMPOO SLS free

Deionized Water, PEG 80 Sorbitan Laurate, Cocamidopropyl Betaine, Sodium Trideceth Sulphate, Glycerin, Abies Balsamea (Fir) Oil, Abies Balsamea (Fir) Powder, Fragrance, Disodium Cocoamphodiacetate, PEG 150 Distearate, Aloe Barbadensis Leaf Juice, Chamomilla Recutita (Matricaria) Flower Extract (Chamomile), Tocopherol (Vitamin E), Phenoxyethanol and Caprylyl Glycol (Optiphen®), Chromium oxide mineral color.

CSH4 - 4 oz. CSH8 - 8 oz. -

BODY LOTION

Deionized Water, Helianthus Annuus (Sunflower) Seed Oil, Glycine Soja (Soybean) Oil, Abies Balsamea (Fir) Oil, Abies Balsamea (Fir) Powder, Fragrance, Caprylic/Capric Triglyceride, Emulsifying Wax NF, Glyceryl Stearate, Stearic Acid, Cetyl Alcohol, Allantoin, Carbomer, Phenoxyethanol and Caprylyl Glycol (Optiphen®).

CBL4 - 4 oz. CBL8 - 8 oz.

BODY WASH SLS Free

Deionized Water, PEG 80 Sorbitan Laurate, Cocamidopropyl Betaine, Sodium Trideceth Sulphate, Glycerin, Abies Balsamea (Fir) Oil, Abies Balsamea (Fir) Powder, Fragrance, Disodium Cocoamphodiacetate, PEG 150 Distearate, Aloe Barbadensis Leaf Juice, Chamomilla Recutita (Matricaria) Flower Extract (Chamomile), Tocopherol (Vitamin E), Phenoxyethanol and Caprylyl Glycol (Optiphen®), Chromium oxide mineral color.

CBW4 - 4 oz. CBW8 - 8 oz.

BEDROCK BODY CARE



All body care products contain our Fir Needle powder and Fir Needle Essential oils and are, therefore, Fir Needle Scented..

BODY BUTTER with Shea Nut and Cocoa Butters

SHAMPOO with Aloe Vera

BODY WASH with Glycerin and Aloe

BODY LOTION with Sunflower Oil

All containers are made of recyclable PET material.

**All products are made with natural ingredients.
(Even those with weird names:-)**

BODY BUTTER



We use our fir needle powder, fir needle essential oil, and our signature naturally derived fir needle fragrance oil to create this unique body butter.

It also contains Shea Butter and Cocoa Butter, which have historical benefits to the skin. Also includes Vitamin E and Japanese Green Tea. This cream is suited for the body, but many use it on the face, especially men after shaving.

BODY BUTTER
SET OF 18—1 oz.
green plastic jars

Includes tester.

Set of 18



Also available in

4 oz

8 oz

FIR NEEDLE SOAPS



All our soaps are natural melt and pour bases and contain no detergents or sulfates.

We use fresh fir needles and dried powder, fir needle essential oil, and our own creation of naturally derived fir needle fragrance oil made with essential oils.



Fir needles were used in steam baths in the olden days so as to inhale the fir needle scented vapors. A warm, steamy shower with fir needle soap can be very soothing.

And, of course, the powder side of the soap is a wonderful exfoliate.

MAN BARS

8 oz.



All of our Soap product ingredients include:

Cocos nucifera (Coconut) Oil, Elaeisguineensis (Palm) Oil, Carthamus tinctorius L (Safflower) Oil, Glycerin (kosher, of vegetable origin) Butyrospermum parkii (Shea Butter), Purified water, Abies Balsamea (Fir) Oil, Abies Balsamea (Fir) Powder, Fragrance, Sodium hydroxide (saponifying agent) Sorbitol propylene glycol (made from vegetable glycerin) Sorbitan oleate (emulsifier), Oat protein, Titanium dioxide (mineral whitener) Chromium oxide (mineral pigment)

The light green soap also contains SHEA BUTTER.

The dark green soap also contains OLIVE and HEMP SEED OIL.

SAME GREAT

FIR NEEDLE SOAP,

DIFFERENT SHAPES AND SIZES!



BIG TREE SOAPS

BIGTREESHEA

BIGTREEHEMP

6 oz. Gift Boxed

FIR NEELDE SOAP DISPLAY



SOAPS

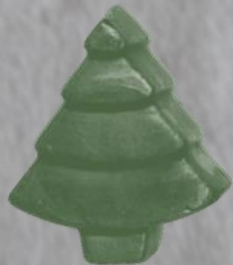
Approx.
2.5 oz.

Sold in
sets of 12
in display

FT102SHEA
2.5 oz.

Order in multiples of 12 only.

This 12 ct. soap set display is also available in the Fir Tree shaped Hemp soap, the lobster shape soap, and the leaf shaped soaps.



FT103Hemp
2.5 oz.



LOBSTER106
2.5 oz



LEAF116
2.5 oz.

Sold in sets of 12 in display

BEDROCK BARS



BEDROCK BAR
BB100Shea



BEDROCK BAR
BB101Hemp



BEAR114



MOOSE112

All soaps pictured
are Approx. 4oz.

All soaps 4 oz.+ are gift
boxed if no Add-on
crate or dish purchased.



FISH104

Also available on a rope if
requested—no charge.

STATE SHAPED SOAPS

ME300Shape



RI200Shape



NYShape
4 oz.



MNShape
4 oz.

MEBar



*All soaps are gift boxed for protection.
All soaps pictured here are 4 oz.*



RIBar



PAShape—4 oz.

We will design a 4 oz. soap for you. There is a set-up charge must be paid before sample is made for Logo soaps.

VTShape



VTBar



#407



NHShape



JAY PEAK RESORT
VT



Soaps for
The Black Dog
Tavern

MAShape



CTShape



CTBar



MABar



Alpaca Soaps
For Red Maple
Sportswear



Brookdale Fruit Farm in NH.
"Live CLEAN or die"

Pictures of items are not scaled.

These soaps are not gift-boxed.
They are double shrink wrapped.

4 oz.

Order with Add-on Soap Dishes.



BEDROCK ROCKS



HEART SHAPED SOAP



WRAPPED SOAPS

SMALL DISPLAY FOR WRAPPED SOAPS

Free Product to offset cost of display.

NEW ADD-ON SOAP CRATES AND SOAP DISHES.

**All Natural Pine wood beveled edges.
MADE IN THE USA.**

These are not standalone products. You must order soap.



We consider them to be value added items. You must order soap to order the soap crate, dish, or window box.



Birch Veneer
Window box.
Add on to 4 oz.
rectangle bars
and 3 oz.
lobster
Only.



HEMP CLAM SHELL SOAP



Wooden display rack available with free product to offset cost. Spinner rack also available.

Fir Needle soaps with Hemp Seed oil are poured directly into plastic reusable clamshell molds. Great for outdoor showers, camping, and travel.



101Clam
4oz.

16 soaps hang on the rack full. Buy 12, get 4 free to offset rack cost.

SHELF TALKERS



With each order you will receive double-sided shelf talker cards. These cards tell a brief version of our story and give tips on burning our candles successfully.



Tom built us a magnificent 2,000 square foot, two story log building for our candle and soap making expansion. We are already looking at plans for another addition.



To save our crop from devastation we installed a protective deer fence around the entire perimeter of our Christmas Tree fields. Fir tree buds are like candy to browsing deer.



**With the help of the
USDA, RI DEM, NATIONAL GRID, FARM CREDIT EAST,
and others we have approvals and are beginning the
installation of a ground mounted Solar Array 18.56kW(AC)
System in August 2018. This will fully supply our electrical
needs here at Bedrock Tree Farm.**

Here at Bedrock Tree Farm we...



Shear



Harvest



Handcraft



And Enjoy!

A stylized illustration of a winter scene with snow-covered evergreen trees and a small cabin in the background.

BEDROCK TREE FARM

Wakefield, Rhode Island

FIR NEEDLE PRODUCTS

SOY WAX Candles and Melts
Custom Molded Soaps
Sea Salt Scrub
Christmas Trees, Wreaths, and Gifts

A square QR code located in the bottom left corner of the advertisement.

ANGIE AND TOM GEARY

Owner/Operators

106 Woodland Trail
Wakefield, RI 02879
401-789-0645 Office
401-783-4754 Barn
401-783-4618 Fax

bedrocktreefarm@ymail.com

View our farm website for more info

BedrockTreeFarm.net



